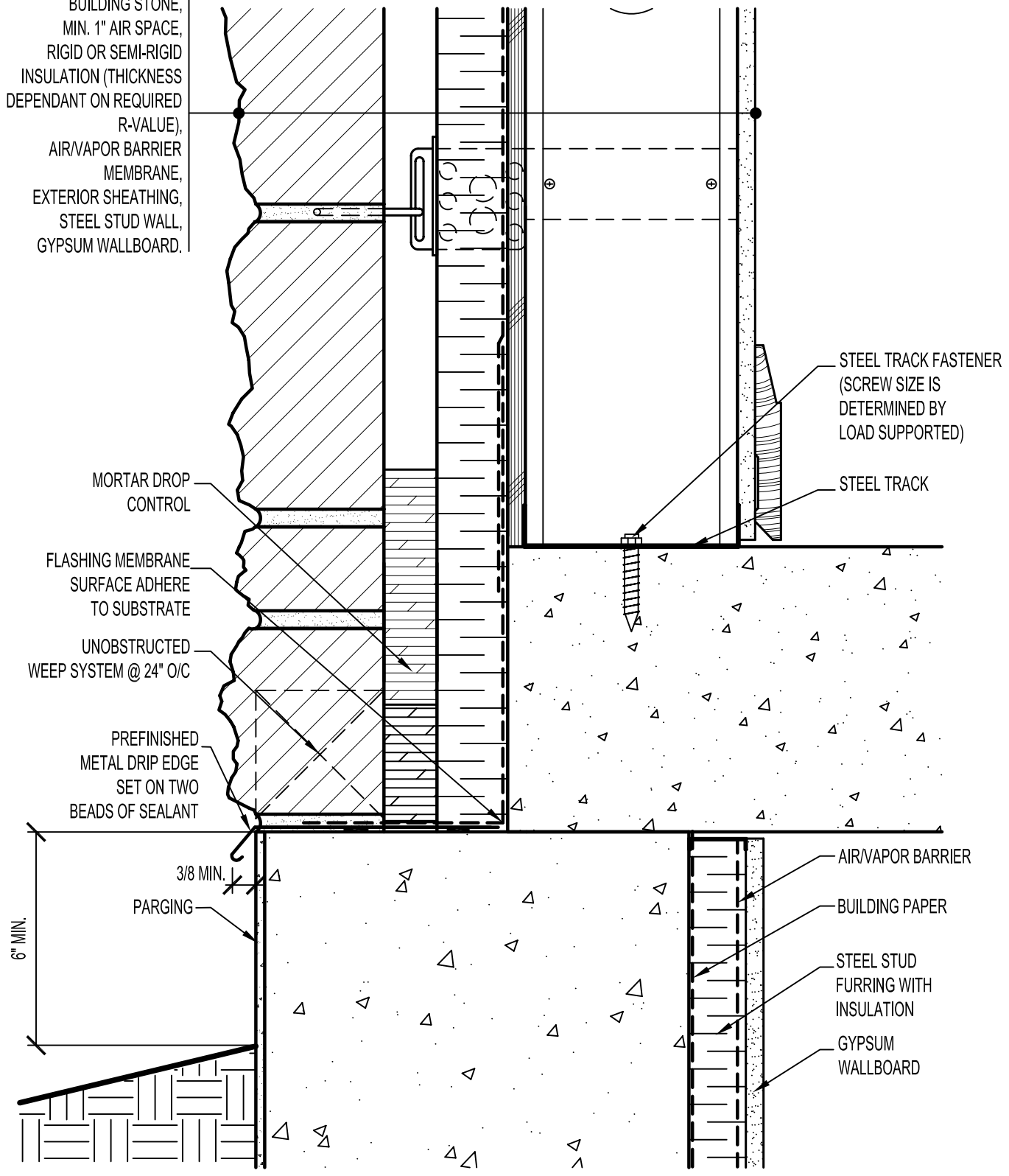


CALCIUM SILICATE  
BUILDING STONE,  
MIN. 1" AIR SPACE,  
RIGID OR SEMI-RIGID  
INSULATION (THICKNESS  
DEPENDANT ON REQUIRED  
R-VALUE),  
AIR/VAPOR BARRIER  
MEMBRANE,  
EXTERIOR SHEATHING,  
STEEL STUD WALL,  
GYPSUM WALLBOARD.



6" MIN.

3/8 MIN.  
PARGING

STEEL TRACK FASTENER  
(SCREW SIZE IS  
DETERMINED BY  
LOAD SUPPORTED)

STEEL TRACK

MORTAR DROP  
CONTROL

FLASHING MEMBRANE  
SURFACE ADHERE  
TO SUBSTRATE

UNOBSTRUCTED  
WEEP SYSTEM @ 24" O/C

PREFINISHED  
METAL DRIP EDGE  
SET ON TWO  
BEADS OF SEALANT

AIR/VAPOR BARRIER

BUILDING PAPER

STEEL STUD  
FURRING WITH  
INSULATION

GYPSUM  
WALLBOARD



**ARRISCRAFT**  
INTERNATIONAL  
BUILDING STONE • BRICK • LIMESTONE

**ARRISCRAFT • CADD**

TITLE:  
**ALTERNATIVE FOUNDATION  
TO WALL JUNCTION WITH SOIL**

DATE DRAWN:  
08/30/04

SCALE:  
3"=1'-0"

DRAWN BY:  
LPS

DETAIL No:  
SS LR4I

**U002**