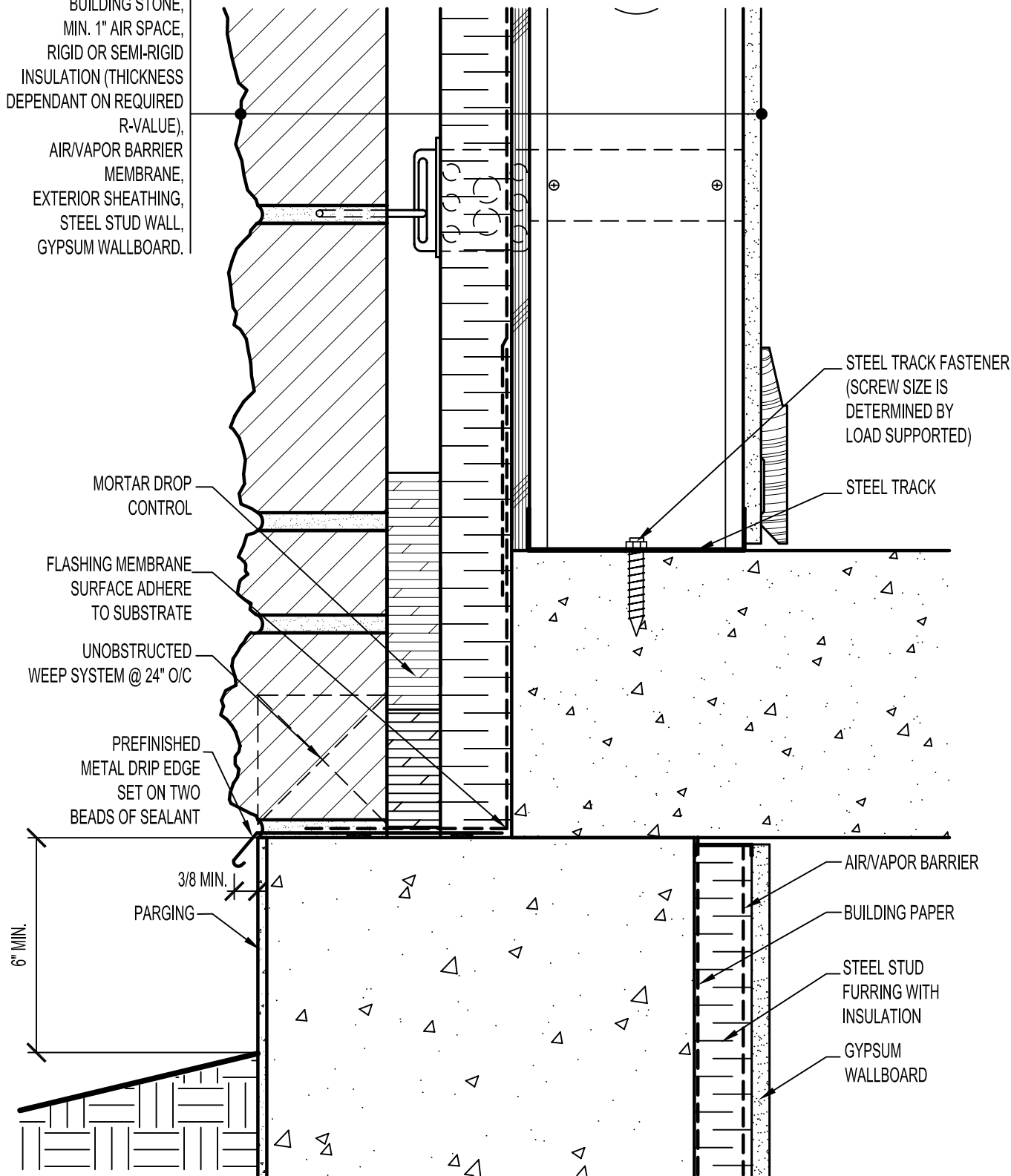


CALCIUM SILICATE  
BUILDING STONE,  
MIN. 1" AIR SPACE,  
RIGID OR SEMI-RIGID  
INSULATION (THICKNESS  
DEPENDANT ON REQUIRED  
R-VALUE),  
AIR/VAPOR BARRIER  
MEMBRANE,  
EXTERIOR SHEATHING,  
STEEL STUD WALL,  
GYPSUM WALLBOARD.



**ARRISCRAFT • CADD**

TITLE: ALTERNATIVE FOUNDATION TO WALL JUNCTION WITH SOIL

DATE DRAWN: 08/30/04

SCALE: 3"=1'-0"

DRAWN BY: LPS

DETAIL No: SS LR31

**U002**