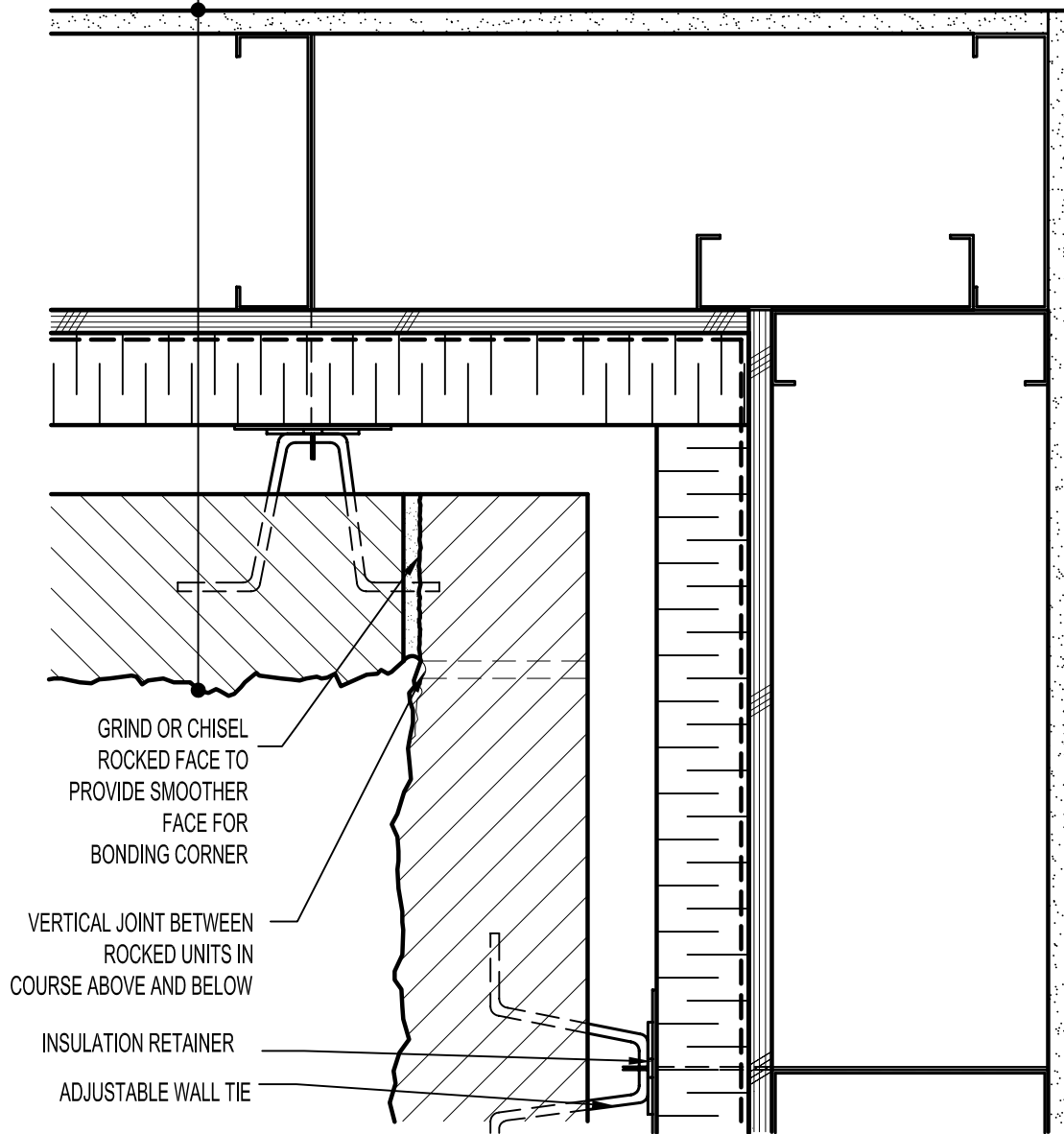


GYPSUM WALLBOARD,
 STEEL STUD WALL,
 EXTERIOR SHEATHING,
 AIR/VAPOR BARRIER
 MEMBRANE,
 RIGID OR SEMI-RIGID
 INSULATION (THICKNESS
 DEPENDANT ON REQUIRED
 R-VALUE),
 MIN. 1" AIR SPACE,
 CALCIUM SILICATE BUILDING STONE.



GRIND OR CHISEL
 ROCKED FACE TO
 PROVIDE SMOOTHER
 FACE FOR
 BONDING CORNER

VERTICAL JOINT BETWEEN
 ROCKED UNITS IN
 COURSE ABOVE AND BELOW

INSULATION RETAINER
 ADJUSTABLE WALL TIE



ARRISCRAFT
 INTERNATIONAL
 BUILDING STONE • BRICK • LIMESTONE

ARRISCRAFT • CADD

TITLE:
 TYPICAL BONDED INSIDE
 CORNER

DATE DRAWN:
 09/13/11

SCALE:
 3"=1'-0"

DRAWN BY:
 DDN

DETAIL No:
 SS CU3

U153