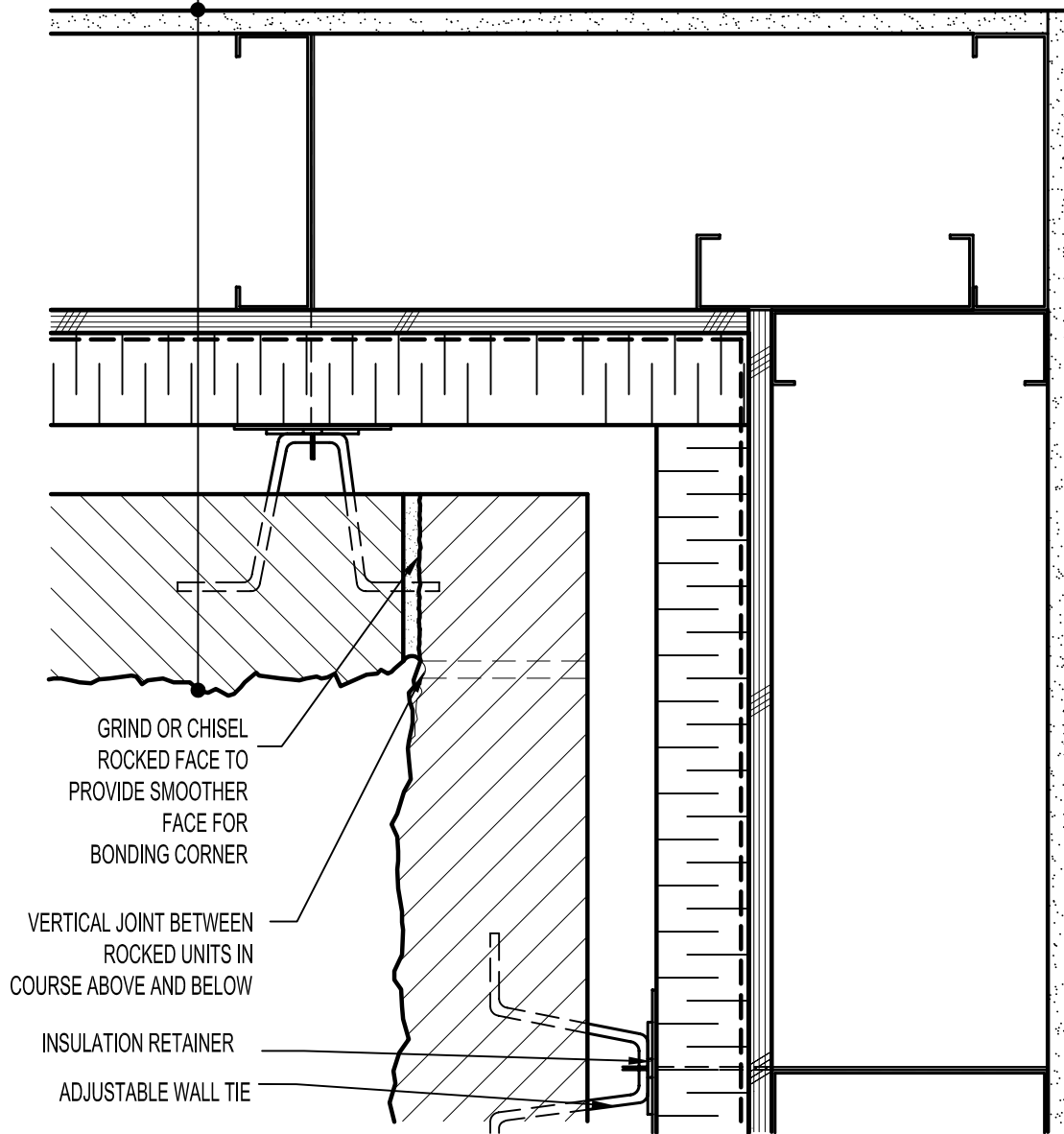


GYPSUM WALLBOARD,  
 STEEL STUD WALL,  
 EXTERIOR SHEATHING,  
 AIR/VAPOR BARRIER  
 MEMBRANE,  
 RIGID OR SEMI-RIGID  
 INSULATION (THICKNESS  
 DEPENDANT ON REQUIRED  
 R-VALUE),  
 MIN. 1" AIR SPACE,  
 CALCIUM SILICATE BUILDING STONE.



GRIND OR CHISEL  
 ROCKED FACE TO  
 PROVIDE SMOOTHER  
 FACE FOR  
 BONDING CORNER

VERTICAL JOINT BETWEEN  
 ROCKED UNITS IN  
 COURSE ABOVE AND BELOW

INSULATION RETAINER  
 ADJUSTABLE WALL TIE



**ARRISCRAFT**  
 INTERNATIONAL  
 BUILDING STONE • BRICK • LIMESTONE

**ARRISCRAFT • CADD**

TITLE:

TYPICAL BONDED INSIDE  
 CORNER

DATE DRAWN:  
 08/30/04

SCALE:  
 3"=1'-0"

DRAWN BY:  
 LPS

DETAIL No:

SS CD4I

**U153**