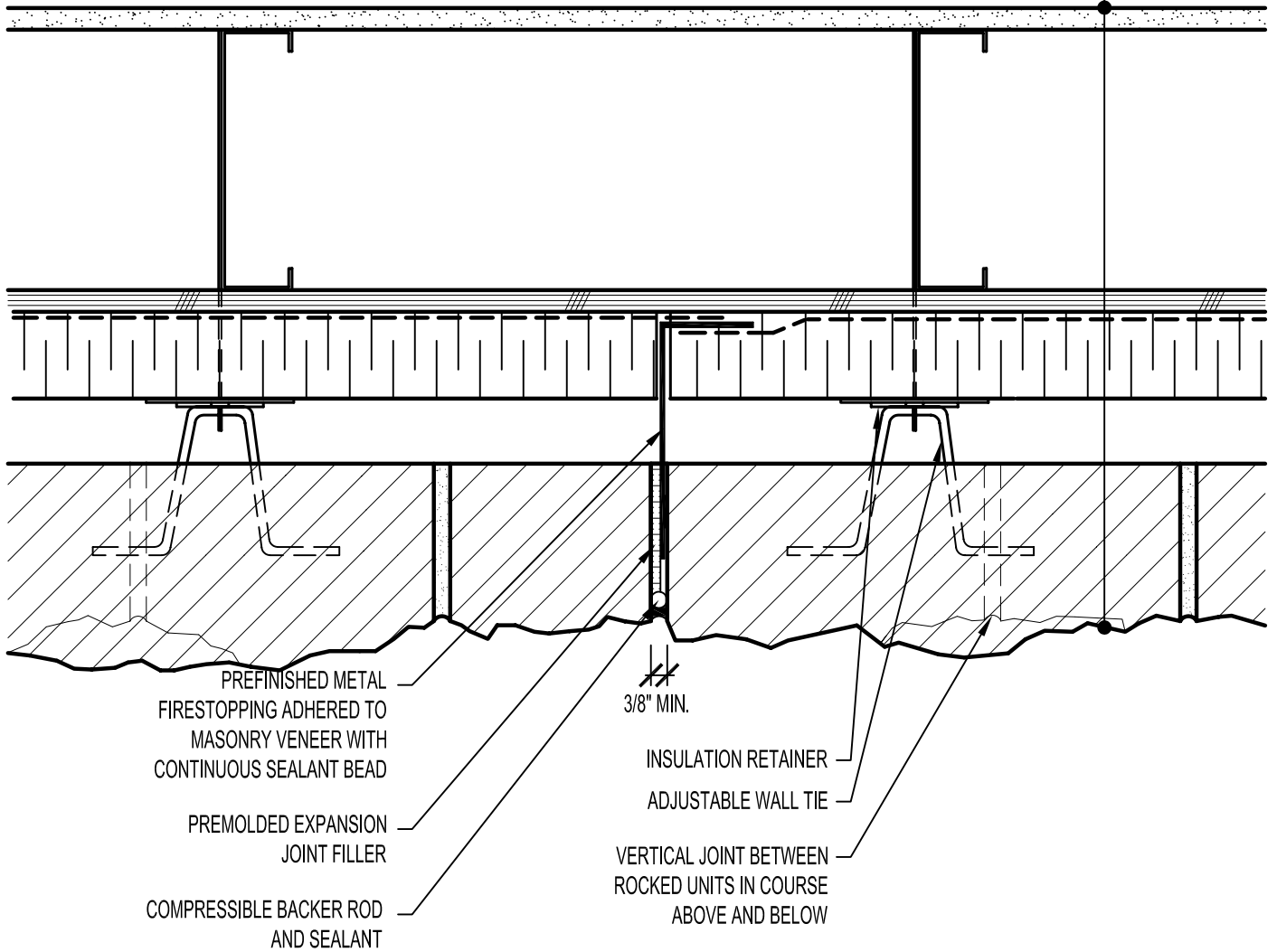


CALCIUM SILICATE
 BUILDING STONE,
 MIN. 1" AIR SPACE,
 RIGID OR SEMI-RIGID
 INSULATION (THICKNESS
 DEPENDANT ON
 REQUIRED R-VALUE),
 AIR/VAPOR BARRIER
 MEMBRANE,
 STEEL STUD WALL,
 GYPSUM BOARD.



ARRISCRAFT
 INTERNATIONAL
 BUILDING STONE • BRICK • LIMESTONE

ARRISCRAFT • CADD

TITLE:

MOVEMENT JOINT
 WITH FIRESTOPPING

DATE DRAWN:
 08/30/04

SCALE:
 3"=1'-0"

DRAWN BY:
 LPS

DETAIL No:

SS CD4I

U141