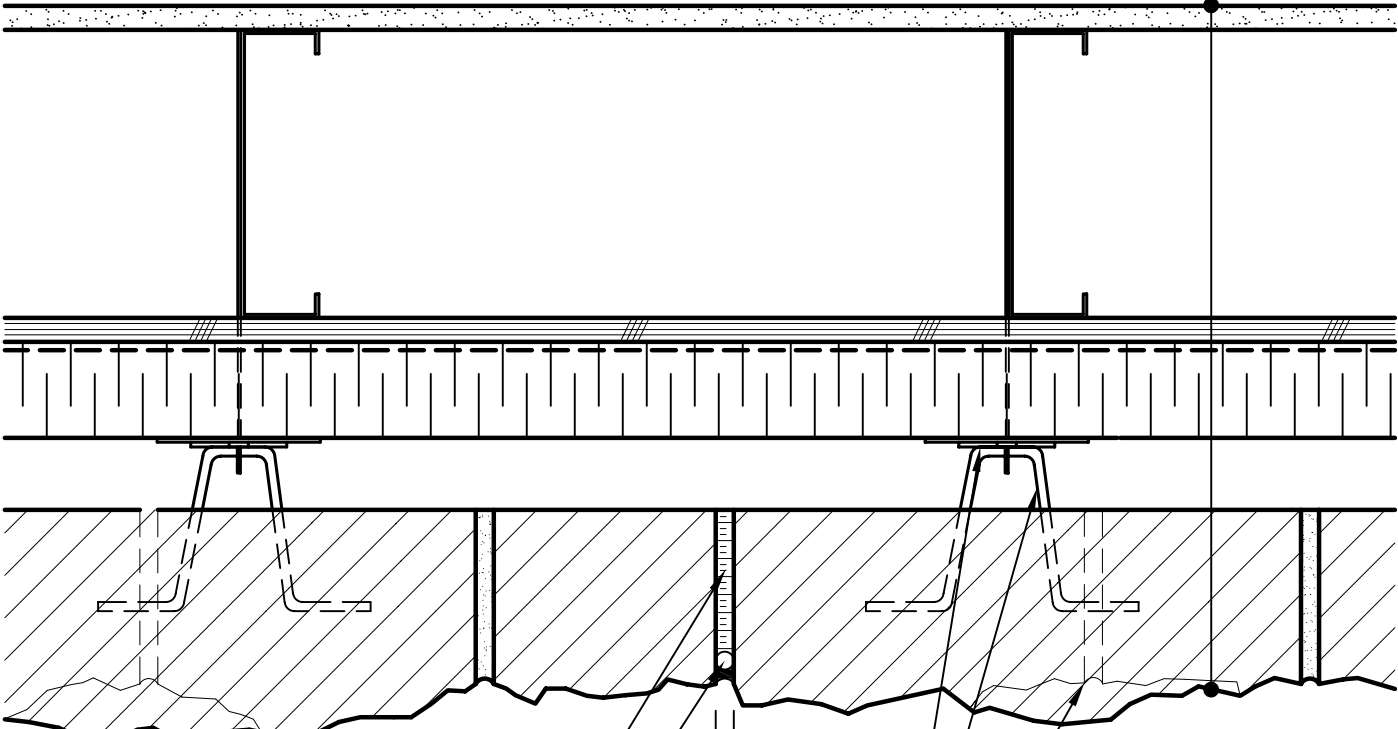


CALCIUM SILICATE  
 BUILDING STONE,  
 MIN. 1" AIR SPACE,  
 RIGID OR SEMI-RIGID  
 INSULATION (THICKNESS  
 DEPENDANT ON  
 REQUIRED R-VALUE),  
 AIR/VAPOR BARRIER  
 MEMBRANE,  
 STEEL STUD WALL  
 GYPSUM BOARD.



PREMOLDED EXPANSION  
 JOINT FILLER  
 COMPRESSIBLE BACKER ROD  
 AND SEALANT  
 3/8" MIN.  
 INSULATION RETAINER  
 ADJUSTABLE WALL TIE  
 VERTICAL JOINT BETWEEN  
 ROCKED UNITS IN COURSE  
 ABOVE AND BELOW



**ARRISCRAFT**  
 INTERNATIONAL  
 BUILDING STONE • BRICK • LIMESTONE

**ARRISCRAFT • CADD**

TITLE:

**MOVEMENT JOINT**

DATE DRAWN:  
 08/30/04

SCALE:  
 3"=1'-0"

DRAWN BY:  
 LPS

DETAIL No:

SS CD4I

**U140**