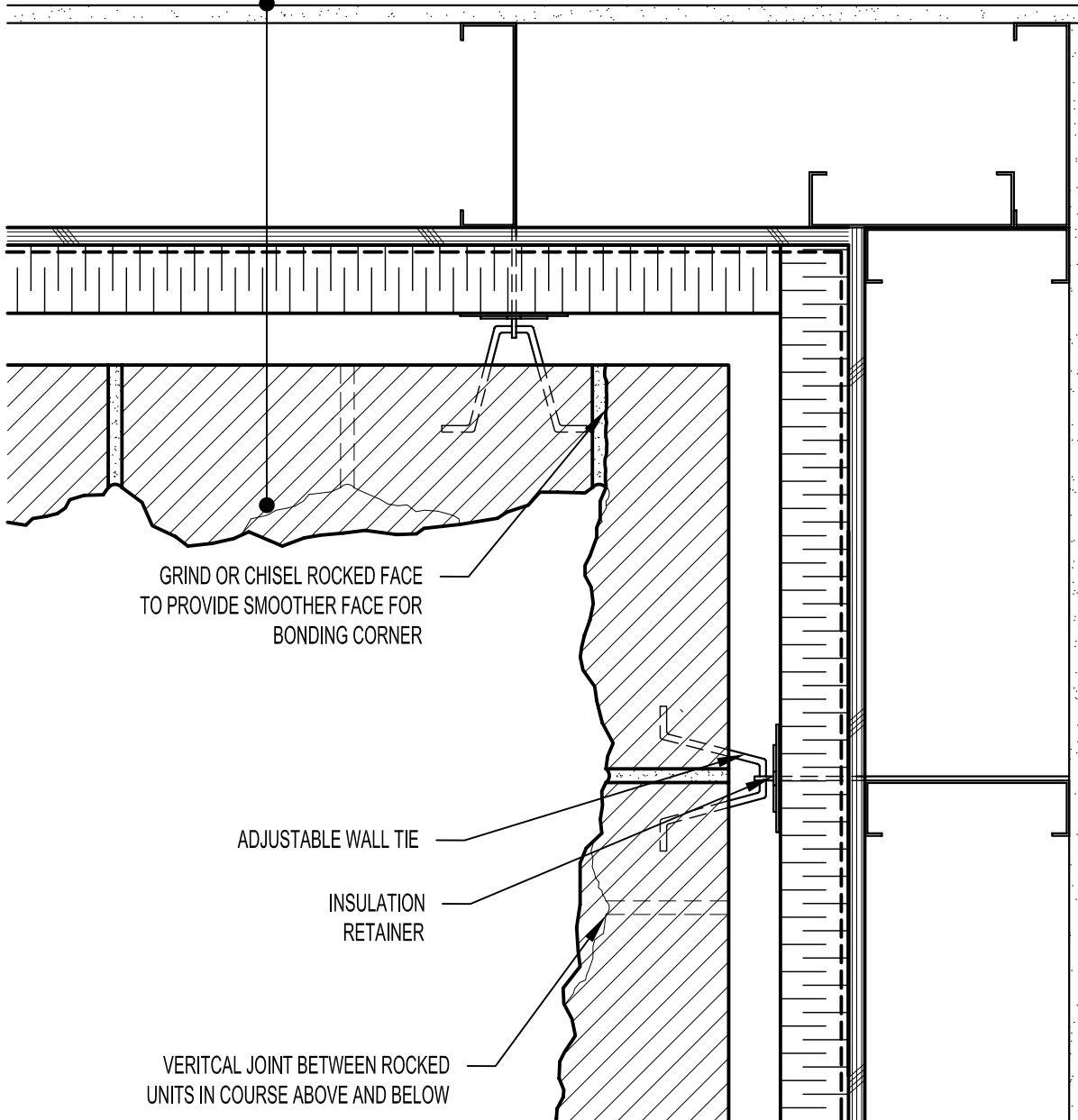


GYPSUM WALLBOARD,
 STEEL STUD WALL,
 EXTERIOR SHEATHING,
 AIR/VAPOUR BARRIER
 MEMBRANE,
 RIGID OR SEMI-RIGID INSULATION
 (THICKNESS DEPENDANT
 ON REQUIRED R-VALUE),
 MIN. 25 MM AIR SPACE,
 CALCIUM SILICATE BUILDING STONE.



GRIND OR CHISEL ROCKED FACE
 TO PROVIDE SMOOTHER FACE FOR
 BONDING CORNER

ADJUSTABLE WALL TIE

INSULATION
 RETAINER

VERTICAL JOINT BETWEEN ROCKED
 UNITS IN COURSE ABOVE AND BELOW



ARRISCRAFT
 INTERNATIONAL
 BUILDING STONE • BRICK • LIMESTONE

ARRISCRAFT • CADD

TITLE:

TYPICAL BONDED INSIDE
 CORNER

DATE DRAWN:
 08/30/04

SCALE:
 1:5

DRAWN BY:
 LPS

DETAIL No:
 SS CD3M

D153