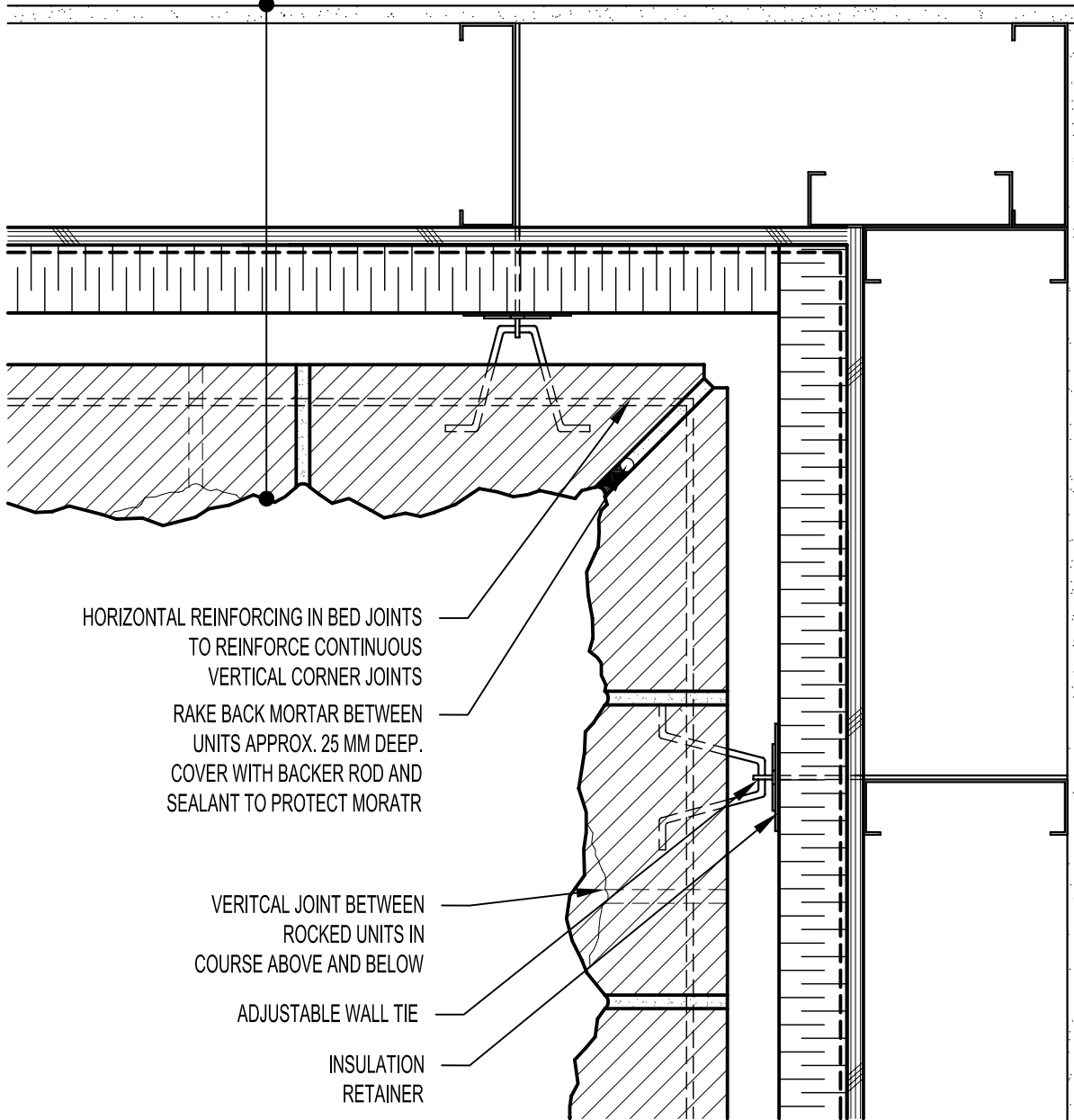


GYPSUM WALLBOARD,  
 STEEL STUD WALL,  
 EXTERIOR SHEATHING,  
 AIR/VAPOUR BARRIER  
 MEMBRANE,  
 RIGID OR SEMI-RIGID INSULATION  
 (THICKNESS DEPENDANT  
 ON REQUIRED R-VALUE),  
 MIN. 25 MM AIR SPACE,  
 CALCIUM SILICATE BUILDING STONE.



HORIZONTAL REINFORCING IN BED JOINTS  
 TO REINFORCE CONTINUOUS  
 VERTICAL CORNER JOINTS

RAKE BACK MORTAR BETWEEN  
 UNITS APPROX. 25 MM DEEP.  
 COVER WITH BACKER ROD AND  
 SEALANT TO PROTECT MORATR

VERTICAL JOINT BETWEEN  
 ROCKED UNITS IN  
 COURSE ABOVE AND BELOW

ADJUSTABLE WALL TIE

INSULATION  
 RETAINER



**ARRISCRAFT**  
 INTERNATIONAL  
 BUILDING STONE • BRICK • LIMESTONE

**ARRISCRAFT • CADD**

TITLE:

INSIDE MITRED CORNER

DATE DRAWN:  
 08/30/04

SCALE:  
 1:5

DRAWN BY:  
 LPS

DETAIL No:  
 SS CD3M

**D151**