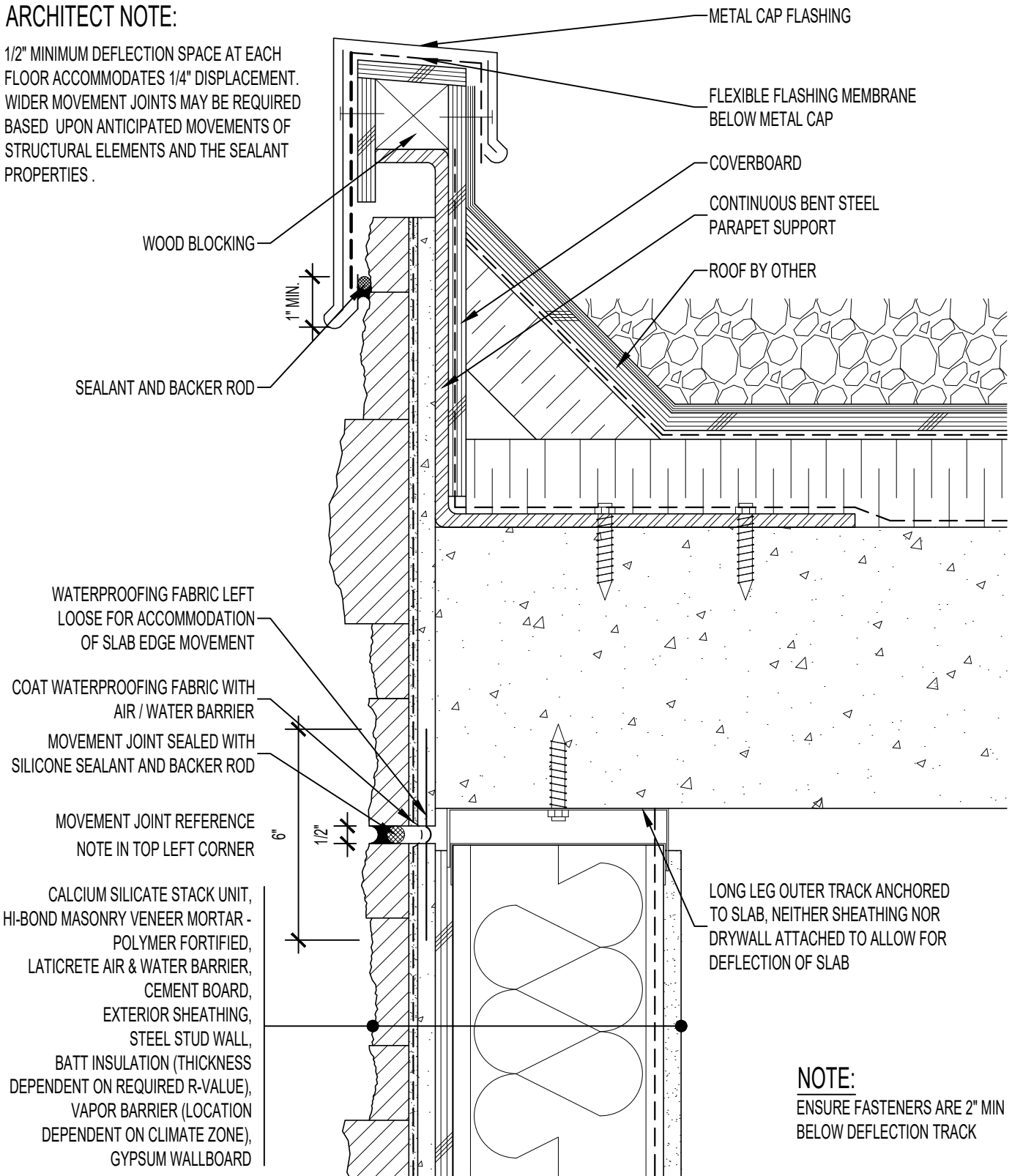


ARCHITECT NOTE:

1/2" MINIMUM DEFLECTION SPACE AT EACH FLOOR ACCOMMODATES 1/4" DISPLACEMENT. WIDER MOVEMENT JOINTS MAY BE REQUIRED BASED UPON ANTICIPATED MOVEMENTS OF STRUCTURAL ELEMENTS AND THE SEALANT PROPERTIES.



NOTE:
ENSURE FASTENERS ARE 2" MIN BELOW DEFLECTION TRACK



ARRISCRAFT-CADD

DETAIL No:
SSAS3I

TITLE:
LOW PARAPET TO WALL
WITH METAL CAP FLASHING

U120

DATE DRAWN: 13 Jan 2021 SCALE: 3"=1'-0" DRAWN BY: TRI