

CALCIUM SILICATE STACK UNIT,
 HI-BOND MASONRY VENEER MORTAR -
 POLYMER FORTIFIED,
 LATICRETE AIR & WATER BARRIER,
 CEMENT BOARD,
 EXTERIOR SHEATHING,
 STEEL STUD WALL,
 BATT INSULATION (THICKNESS
 DEPENDENT ON REQUIRED R-VALUE),
 VAPOR BARRIER (LOCATION
 DEPENDENT ON CLIMATE ZONE),
 GYPSUM WALLBOARD

COMPRESSIBLE BACKER
 ROD AND SEALANT
 RAKE BACK MORTAR BETWEEN
 UNITS APPROX. 3/4" DEEP.
 COVER w/ BACKER ROD AND
 SEALANT TO PROTECT MORTAR

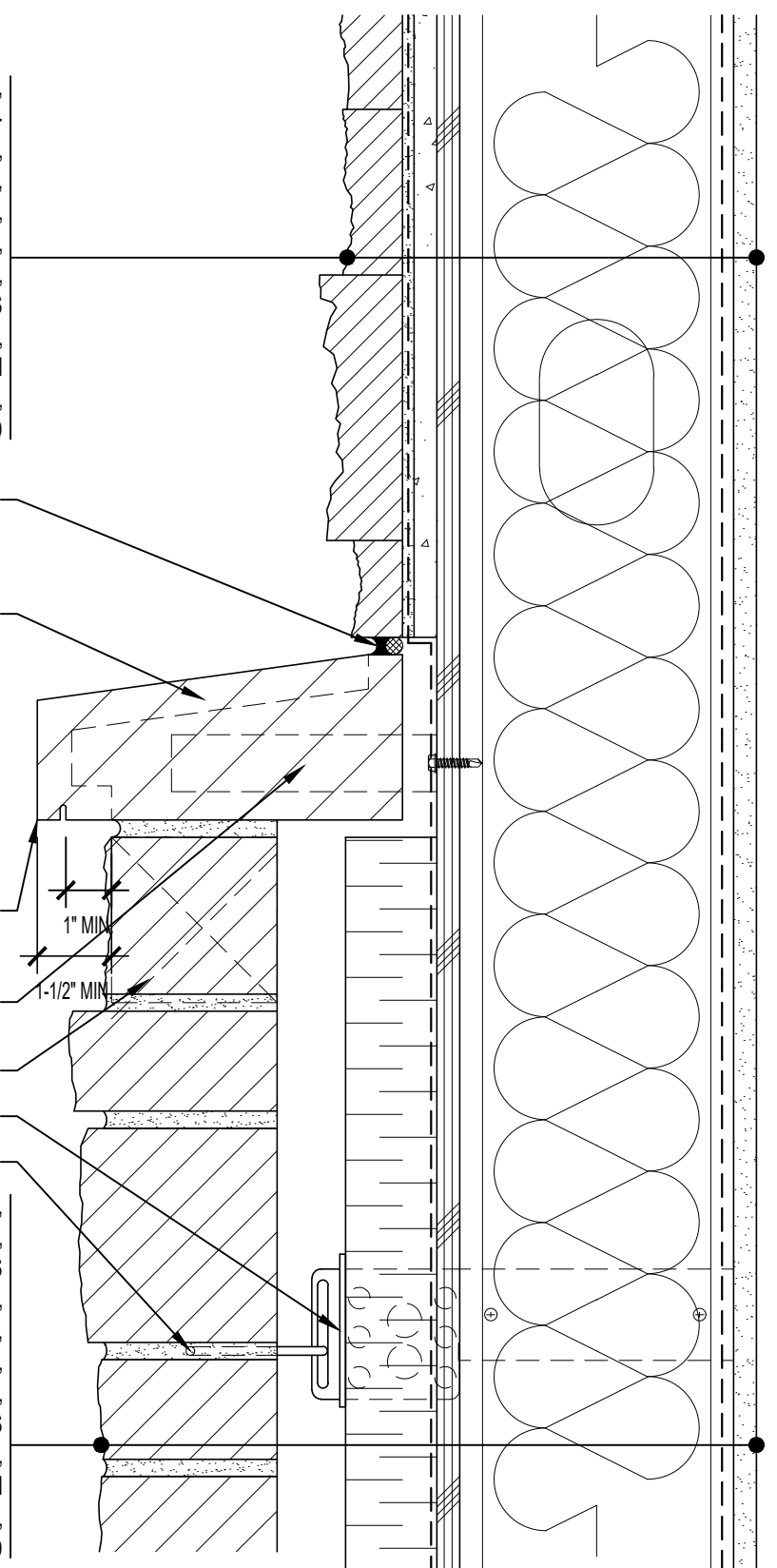
BULLNOSE CALCIUM SILICATE
 WATERTABLE UNIT
 1" MIN
 MASONRY TIE OR MECHANICAL
 ANCHOR IN HEAD JOINT
 1-1/2" MIN

VENT @ 24" o.c.

INSULATION RETAINER

ADJUSTABLE WALL TIE

CALCIUM SILICATE MASONRY UNIT,
 MIN. 1" AIR SPACE,
 RIGID INSULATION (THICKNESS
 DEPENDENT ON REQUIRED R-VALUE),
 LATICRETE AIR & WATER BARRIER,
 EXTERIOR SHEATHING,
 STEEL STUD WALL,
 BATT INSULATION (THICKNESS
 DEPENDENT ON REQUIRED R-VALUE),
 VAPOR BARRIER (LOCATION
 DEPENDENT ON CLIMATE ZONE),
 GYPSUM WALLBOARD



ARRISCRAFT-CADD

DETAIL No:

SSAS3I

TITLE: FULL-BED / THIN ADHERED
 CALCIUM SILICATE TRANSITION
 (BULLNOSE WATERTABLE)

U107

DATE DRAWN:
 13 Jan 2021

SCALE:
 3"=1'-0"

DRAWN BY:
 TRI