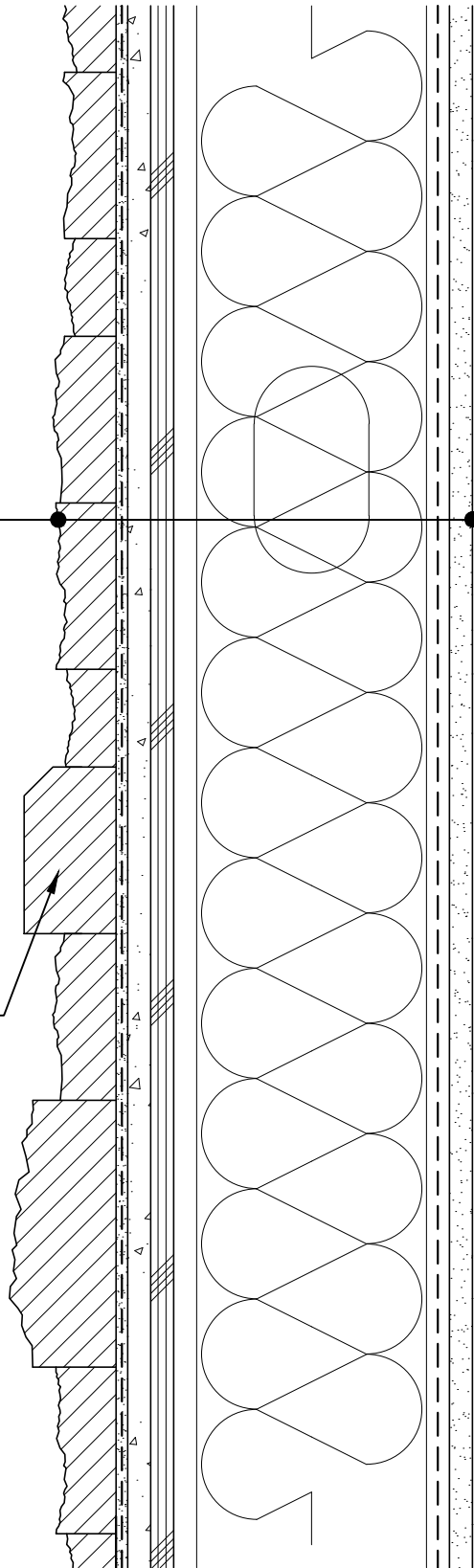


CALCIUM SILICATE STACK UNIT,
 HI-BOND MASONRY VENEER MORTAR -
 POLYMER FORTIFIED,
 LATICRETE AIR & WATER BARRIER,
 CEMENT BOARD,
 EXTERIOR SHEATHING,
 STEEL STUD WALL,
 BATT INSULATION (THICKNESS
 DEPENDENT ON REQUIRED R-VALUE),
 VAPOR BARRIER (LOCATION
 DEPENDENT ON CLIMATE ZONE),
 GYPSUM WALLBOARD

SLOPED WATERTABLE CALCIUM
 SILICATE STACK UNIT



ARRISCRAFT-CADD

DETAIL No:

SSAS3I

TITLE:

SLOPED WATERTABLE

U101

DATE DRAWN:

13 Jan 2021

SCALE:

3"=1'-0"

DRAWN BY:

TRI