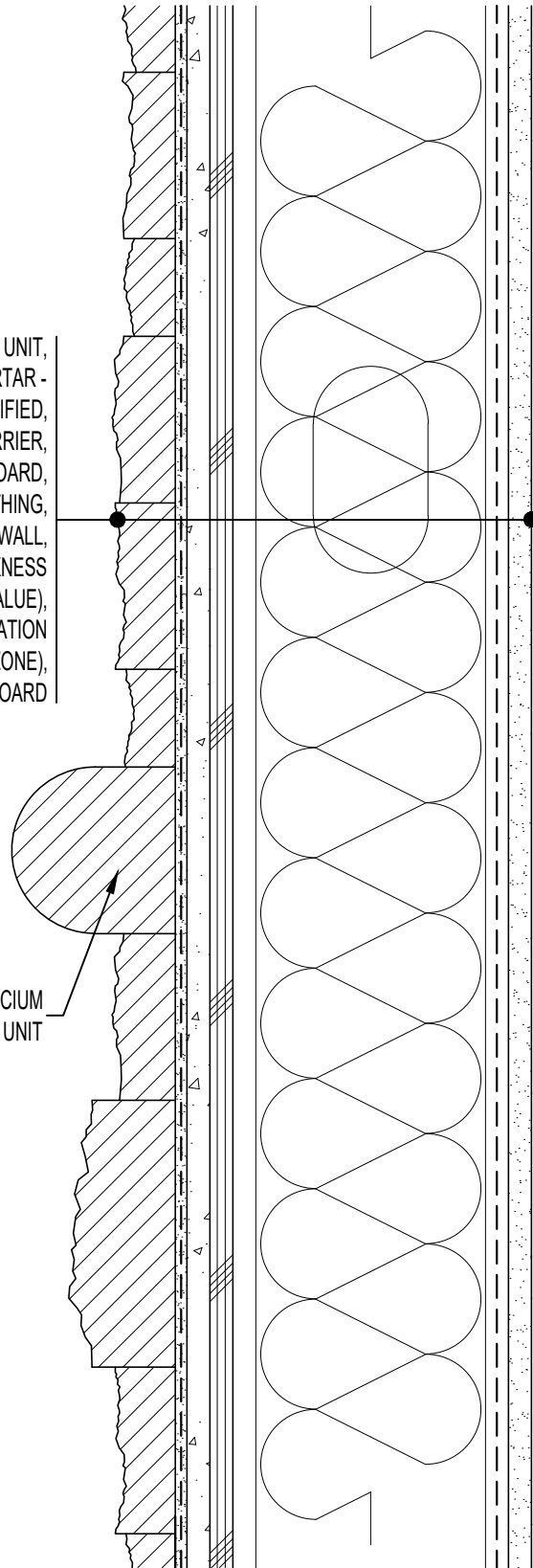


CALCIUM SILICATE STACK UNIT,  
 HI-BOND MASONRY VENEER MORTAR -  
 POLYMER FORTIFIED,  
 LATICRETE AIR & WATER BARRIER,  
 CEMENT BOARD,  
 EXTERIOR SHEATHING,  
 STEEL STUD WALL,  
 BATT INSULATION (THICKNESS  
 DEPENDENT ON REQUIRED R-VALUE),  
 VAPOR BARRIER (LOCATION  
 DEPENDENT ON CLIMATE ZONE),  
 GYPSUM WALLBOARD

BULLNOSE WATERTABLE CALCIUM  
 SILICATE STACK UNIT



**ARRISCRAFT-CADD**

DETAIL No:

SSAS3I

TITLE:

BULLNOSE WATERTABLE

**U100**

DATE DRAWN:

13 Jan 2021

SCALE:

3"=1'-0"

DRAWN BY:

TRI