

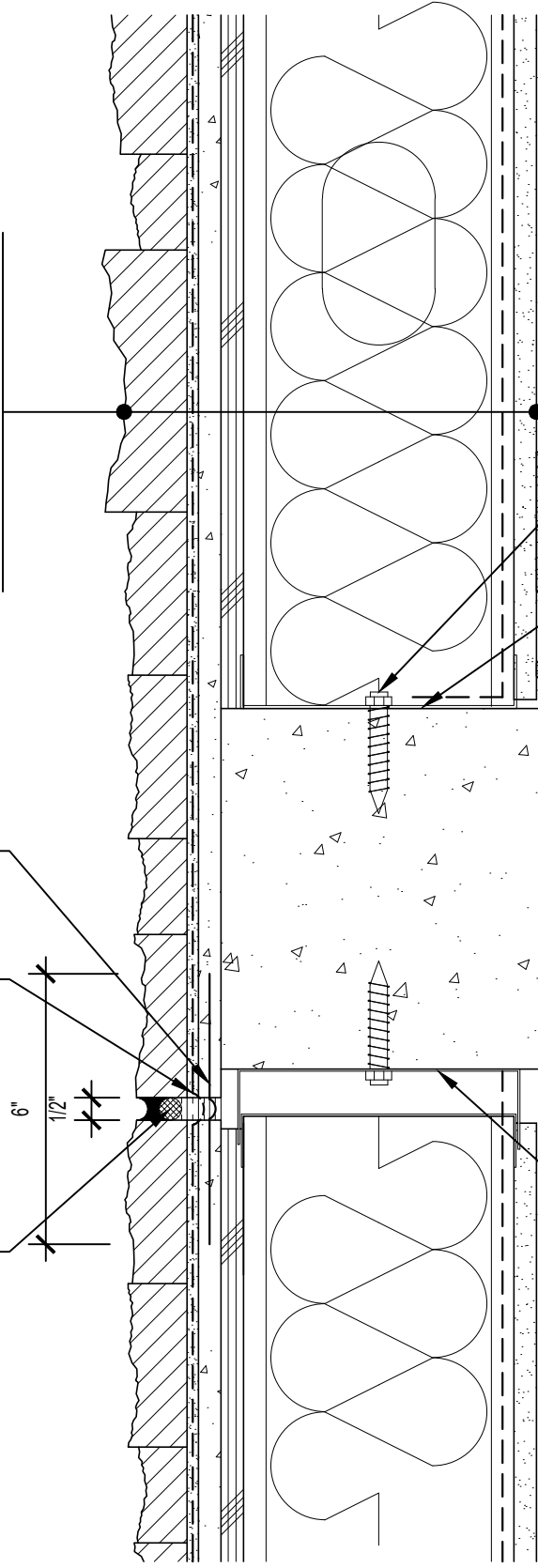
CALCIUM SILICATE STACK UNIT,
 HI-BOND MASONRY VENEER MORTAR -
 POLYMER FORTIFIED,
 LATICRETE AIR & WATER BARRIER,
 CEMENT BOARD,
 EXTERIOR SHEATHING,
 STEEL STUD WALL,
 BATT INSULATION (THICKNESS
 DEPENDENT ON REQUIRED R-VALUE),
 VAPOR BARRIER (LOCATION
 DEPENDENT ON CLIMATE ZONE),
 GYPSUM WALLBOARD

WATERPROOFING FABRIC LEFT
 LOOSE FOR ACCOMMODATION OF
 SLAB EDGE MOVEMENT

COAT WATERPROOFING FABRIC WITH
 AIR / WATER BARRIER

MOVEMENT JOINT REFERENCE
 NOTE IN TOP RIGHT CORNER

MOVEMENT JOINT SEALED WITH
 SILICONE SEALANT AND BACKER ROD



ARCHITECT NOTE:
 1/2" MINIMUM DEFLECTION SPACE AT
 EACH FLOOR ACCOMMODATES 1/4"
 DISPLACEMENT. WIDER MOVEMENT
 JOINTS MAY BE REQUIRED BASED
 UPON ANTICIPATED MOVEMENTS OF
 STRUCTURAL ELEMENTS AND THE
 SEALANT PROPERTIES.

STEEL TRACK FASTENER
 (SCREW SIZE IS DETERMINED
 BY LOAD SUPPORTED)

STEEL TRACK

LONG LEG OUTER TRACK ANCHORED
 TO SLAB, NEITHER SHEATHING NOR
 DRYWALL ATTACHED TO ALLOW FOR
 DEFLECTION OF SLAB

NOTE:
 ENSURE FASTENERS ARE 2" MIN
 BELOW DEFLECTION TRACK



ARRISCRAFT-CADD

DETAIL No:
 SSAS3I

TITLE:
 DEFLECTION SPACE DETAIL

U081

DATE DRAWN: 13 Jan 2021
 SCALE: 3"=1'-0"
 DRAWN BY: TRI