

NOTE: REFER TO  
 DOOR THRESHOLD: SSAS3IU050-51  
 DOOR HEAD: SSAS3IU061

ATTACH SHEATHING WITH  
 APPROVED SCREWS  
 (TYPICAL @ EVERY STUD)

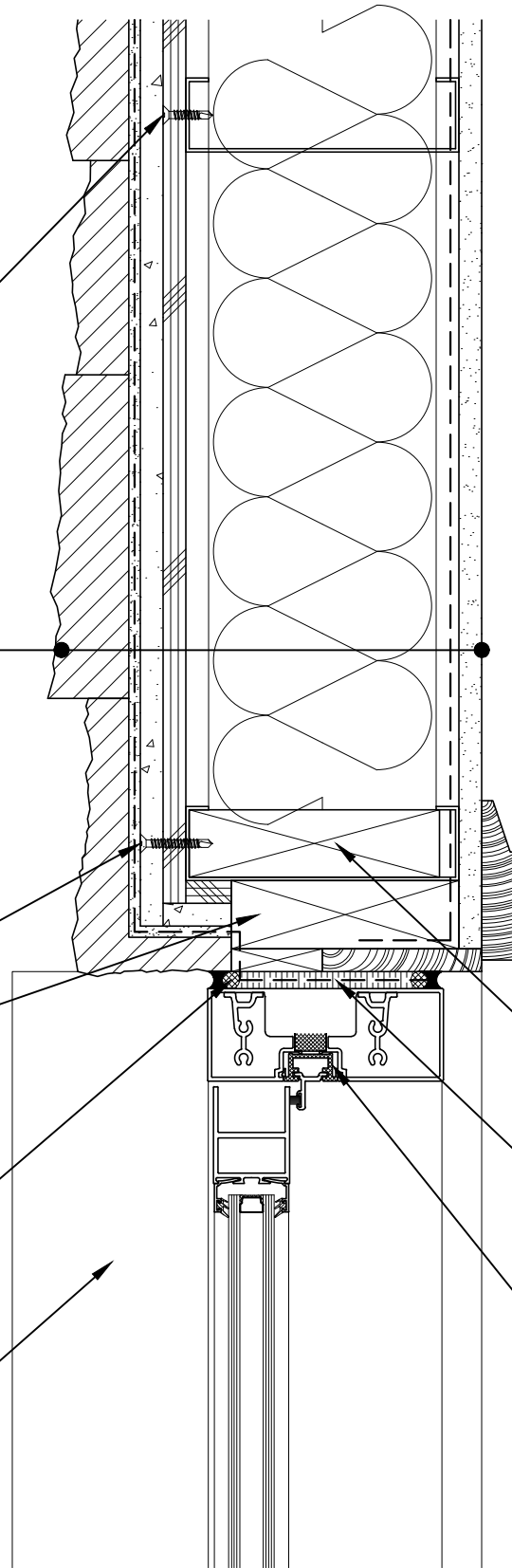
CALCIUM SILICATE STACK UNIT,  
 HI-BOND MASONRY VENEER MORTAR -  
 POLYMER FORTIFIED,  
 LATICRETE AIR & WATER BARRIER,  
 CEMENT BOARD,  
 EXTERIOR SHEATHING,  
 STEEL STUD WALL,  
 BATT INSULATION (THICKNESS  
 DEPENDENT ON REQUIRED R-VALUE),  
 VAPOR BARRIER (LOCATION  
 DEPENDENT ON CLIMATE ZONE),  
 GYPSUM WALLBOARD

ATTACH CEMENT BOARD  
 WITH APPROVED SCREWS  
 (TYPICAL @ EVERY STUD)

WOOD BLOCKING

COMPRESSIBLE BACKER ROD AND  
 SEALANT ALL AROUND FRAME

SLOPED THRESHOLD SILL



WOOD BLOCKING

SPRAY APPLIED FOAM INSULATING  
 AIR SEAL ALL AROUND FRAME

PREMANUFACTURED THERMALLY  
 BROKEN ALUMINUM DOOR ASSEMBLY



**ARRISCRAFT-CADD**

TITLE:  
 ALUMINUM DOOR JAMB -  
 RECESSED DOOR (PLAN VIEW)

DETAIL No:

SSAS3I

**U071**

DATE DRAWN:  
 13 Jan 2021

SCALE:  
 3"=1'-0"

DRAWN BY:  
 TRI