

NOTE: REFER TO  
 DOOR THRESHOLD: SSAS3IU050-51  
 DOOR JAMB: SSAS3IU071

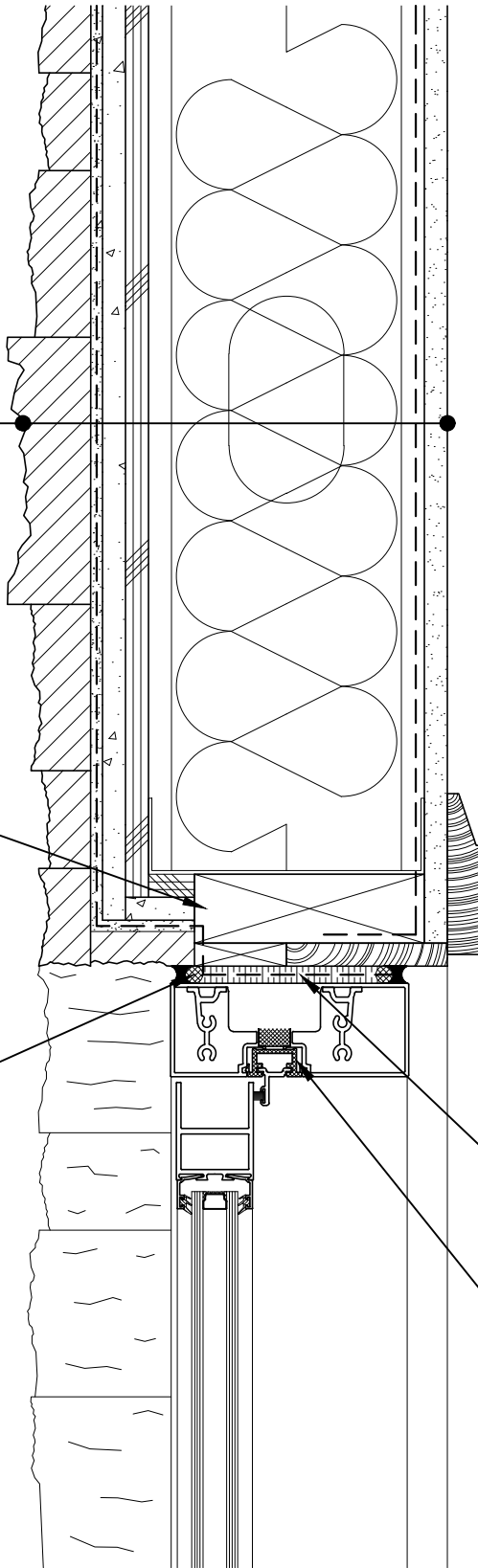
CALCIUM SILICATE STACK UNIT,  
 HI-BOND MASONRY VENEER MORTAR -  
 POLYMER FORTIFIED  
 LATICRETE AIR & WATER BARRIER,  
 CEMENT BOARD,  
 EXTERIOR SHEATHING,  
 STEEL STUD WALL,  
 BATT INSULATION (THICKNESS  
 DEPENDENT ON REQUIRED R-VALUE),  
 VAPOR BARRIER (LOCATION DEPENDENT  
 ON CLIMATE ZONE),  
 GYPSUM WALLBOARD

WOOD BLOCKING

COMPRESSIBLE BACKER ROD AND  
 SEALANT ALL AROUND FRAME

SPRAY APPLIED FOAM INSULATING  
 AIR SEAL ALL AROUND FRAME

PREMANUFACTURED THERMALLY  
 BROKEN ALUMINUM DOOR ASSEMBLY



**ARRISCRAFT · CADD**

TITLE:  
 ALUMINUM DOOR HEAD -  
 RECESSED DOOR

DETAIL No:  
 SSAS3I

**U061**

DATE DRAWN:  
 13 Jan 2021

SCALE:  
 3"=1'-0"

DRAWN BY:  
 TRI