

NOTE: REFER TO
 WINDOW SILL: SSAS3IU021-22
 WINDOW HEAD: SSAS3IU030

ATTACH SHEATHING WITH
 APPROVED SCREWS
 (TYPICAL @ EVERY STUD)

ATTACH CEMENT BOARD
 WITH APPROVED SCREWS
 (TYPICAL @ EVERY STUD)

WOOD BLOCKING

COMPRESSIBLE BACKER
 ROD AND SEALANT

BULLNOSE OR SLOPED
 CALCIUM SILICATE STACK
 UNIT c/w END DAMS

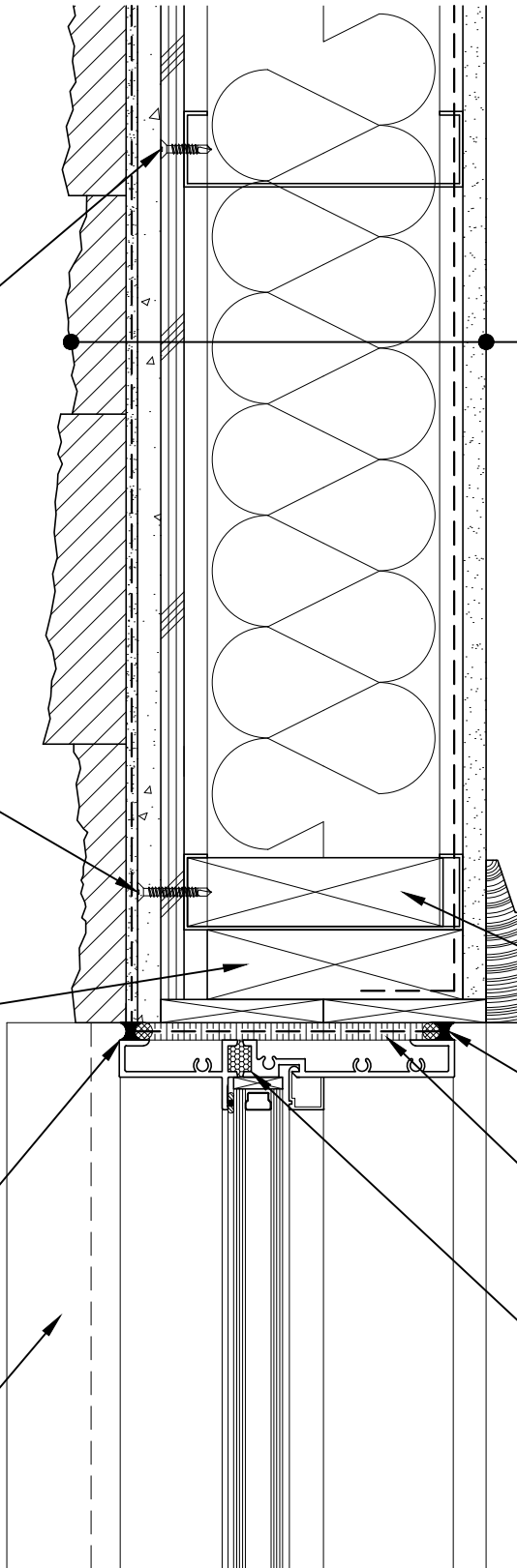
GYPSUM WALLBOARD,
 VAPOR BARRIER (LOCATION DEPENDENT
 ON CLIMATE ZONE),
 STEEL STUD WALL,
 BATT INSULATION (THICKNESS
 DEPENDENT ON REQUIRED R-VALUE),
 EXTERIOR SHEATHING,
 CEMENT BOARD,
 LATICRETE AIR & WATER BARRIER,
 HI-BOND MASONRY VENEER MORTAR -
 POLYMER FORTIFIED,
 CALCIUM SILICATE STACK UNIT

WOOD BLOCKING

COMPRESSIBLE BACKER ROD AND
 SEALANT ALL AROUND FRAME

SPRAY APPLIED FOAM INSULATING
 AIR SEAL ALL AROUND FRAME

PREMANUFACTURED THERMALLY
 BROKEN ALUMINUM WINDOW ASSEMBLY



ARRISCRAFT-CADD

DETAIL No:

SSAS3I

TITLE:

WINDOW JAMB WITH
 STACK SILL (PLAN VIEW)

U041

DATE DRAWN:

13 Jan 2021

SCALE:

3"=1'-0"

DRAWN BY:

TRI