

REFER TO
 WINDOW SILL: SSAS3IU023-25
 WINDOW JAMB: SSAS3IU042-43

GYPSUM WALLBOARD,
 VAPOR BARRIER (LOCATION DEPENDENT
 ON CLIMATE ZONE),
 STEEL STUD WALL,
 BATT INSULATION (THICKNESS
 DEPENDENT ON REQUIRED R-VALUE),
 EXTERIOR SHEATHING,
 CEMENT BOARD,
 LATICRETE AIR & WATER BARRIER,
 HI-BOND MASONRY VENEER MORTAR -
 POLYMER FORTIFIED,
 CALCIUM SILICATE STACK UNIT

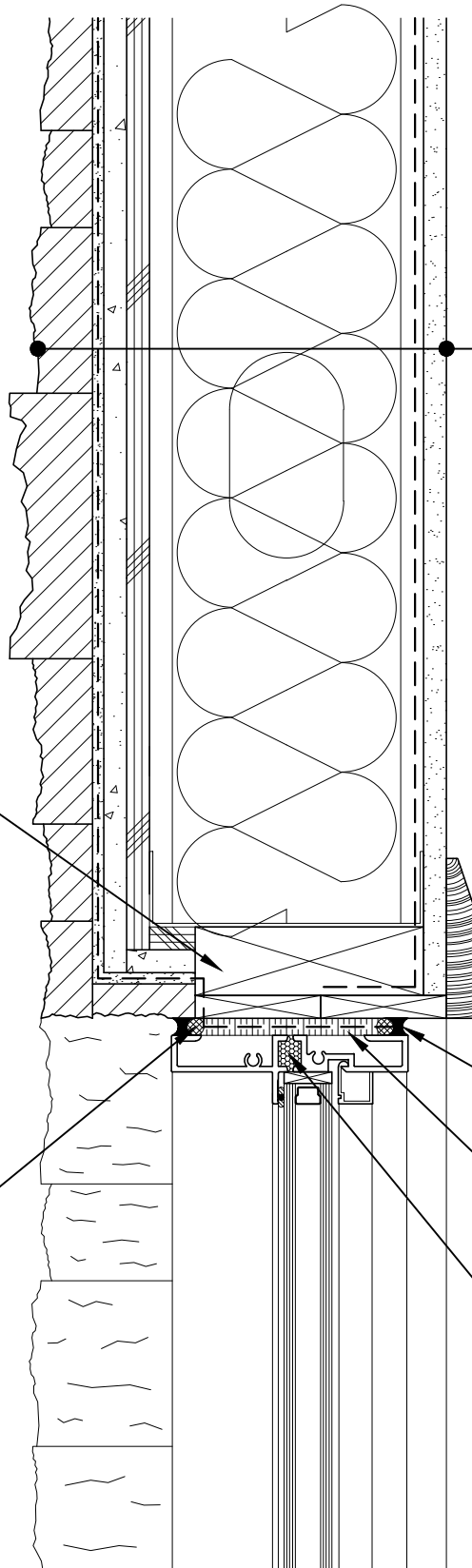
WOOD BLOCKING

COMPRESSIBLE BACKER
 ROD AND SEALANT

COMPRESSIBLE BACKER ROD AND
 SEALANT ALL AROUND FRAME

SPRAY APPLIED FOAM INSULATING
 AIR SEAL ALL AROUND FRAME

PREMANUFACTURED THERMALLY
 BROKEN ALUMINUM WINDOW ASSEMBLY



ARRISCRAFT · CADD

DETAIL No:

SSAS3I

TITLE:
 ALUMINUM WINDOW HEAD -
 RECESSED WINDOW

U031

DATE DRAWN:
 13 Jan 2021

SCALE:
 3"=1'-0"

DRAWN BY:
 TRI