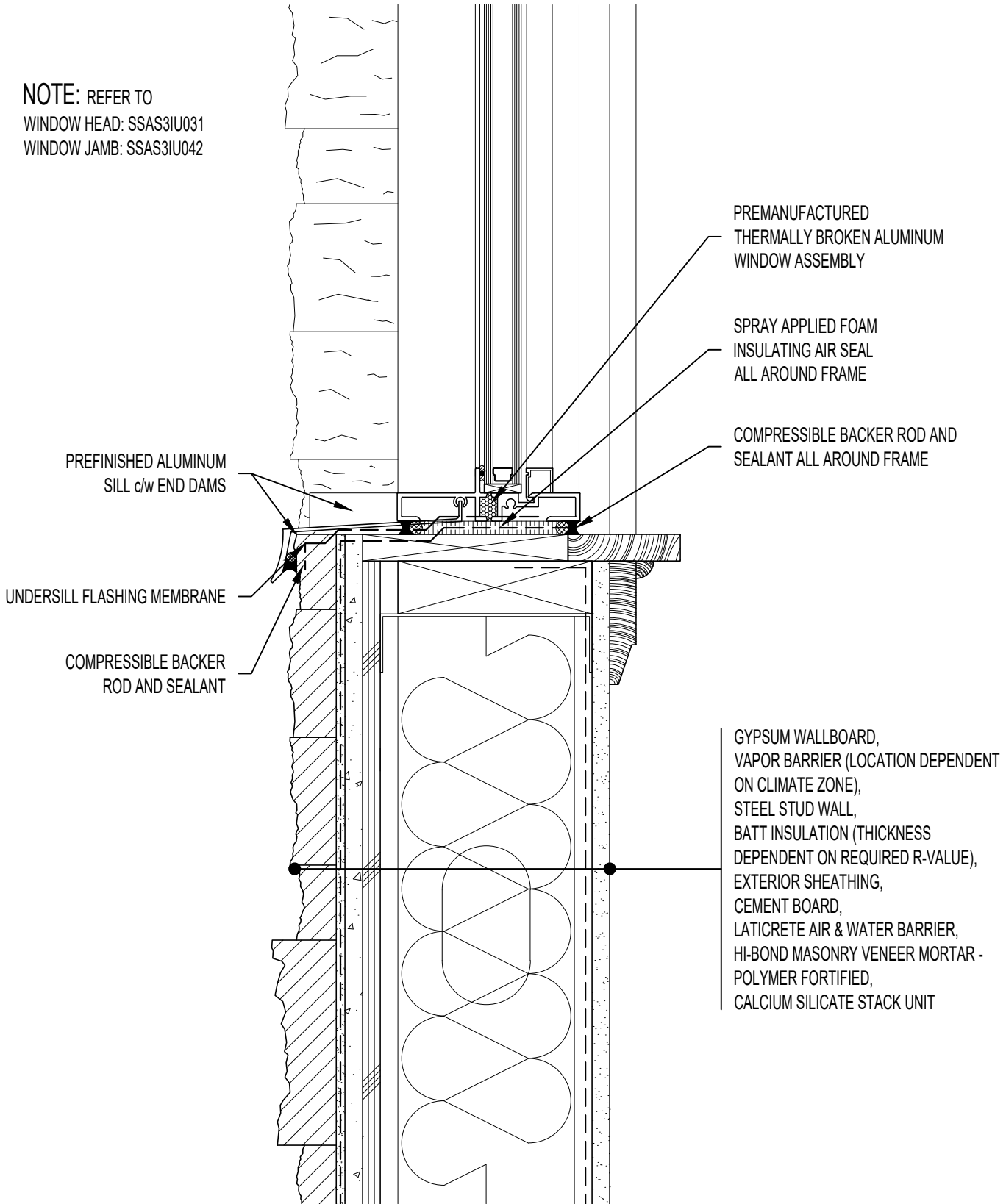


NOTE: REFER TO
 WINDOW HEAD: SSAS3IU031
 WINDOW JAMB: SSAS3IU042



PREMANUFACTURED
 THERMALLY BROKEN ALUMINUM
 WINDOW ASSEMBLY

SPRAY APPLIED FOAM
 INSULATING AIR SEAL
 ALL AROUND FRAME

COMPRESSIBLE BACKER ROD AND
 SEALANT ALL AROUND FRAME

PREFINISHED ALUMINUM
 SILL c/w END DAMS

UNDERSILL FLASHING MEMBRANE

COMPRESSIBLE BACKER
 ROD AND SEALANT

GYPSUM WALLBOARD,
 VAPOR BARRIER (LOCATION DEPENDENT
 ON CLIMATE ZONE),
 STEEL STUD WALL,
 BATT INSULATION (THICKNESS
 DEPENDENT ON REQUIRED R-VALUE),
 EXTERIOR SHEATHING,
 CEMENT BOARD,
 LATICRETE AIR & WATER BARRIER,
 HI-BOND MASONRY VENEER MORTAR -
 POLYMER FORTIFIED,
 CALCIUM SILICATE STACK UNIT



ARRISCRAFT-CADD

DETAIL No:
 SSAS3I

TITLE:
 ALUMINUM WINDOW SILL -
 RECESSED WINDOW

U023

DATE DRAWN: 13 Jan 2021	SCALE: 3"=1'-0"	DRAWN BY: TRI
----------------------------	--------------------	------------------