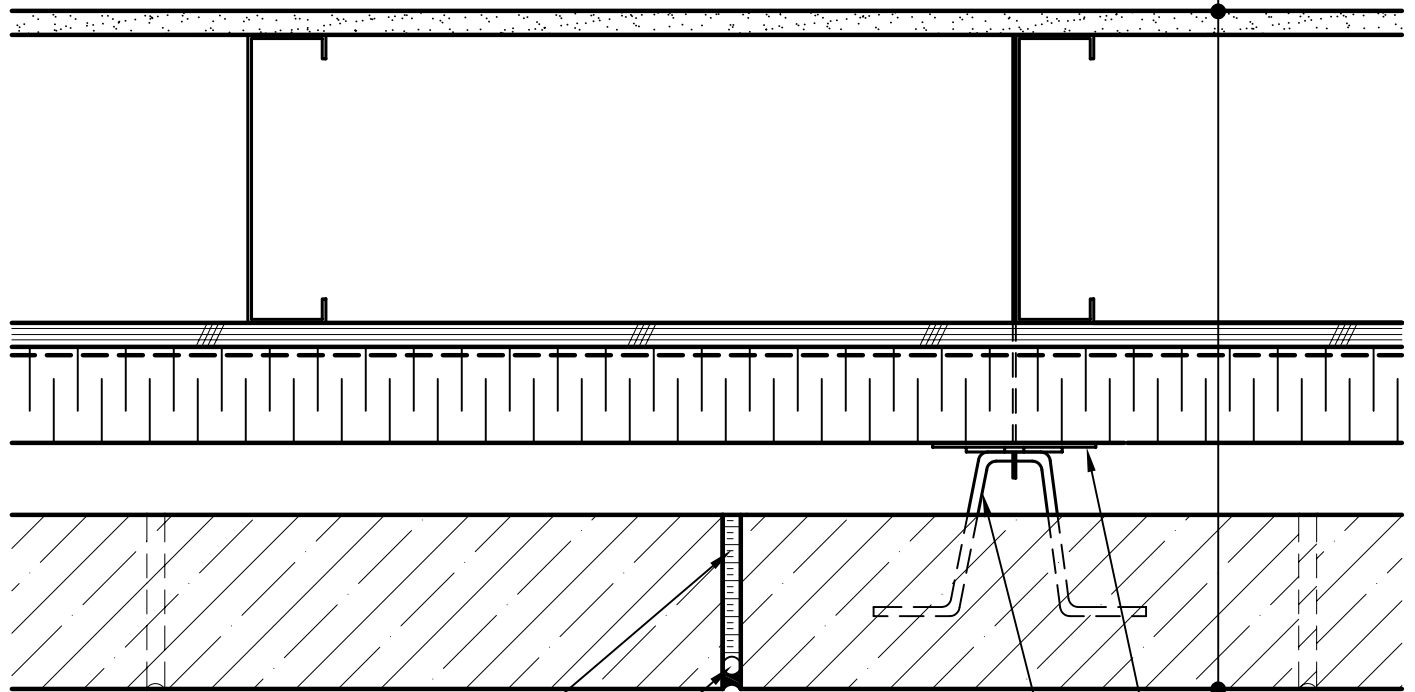


ADAIR® LIMESTONE MASONRY UNIT,
 MIN. 1" AIR SPACE,
 RIGID OR SEMI-RIGID
 INSULATION (THICKNESS
 DEPENDANT ON REQUIRED
 R-VALUE),
 AIR/VAPOR BARRIER
 MEMBRANE,
 EXTERIOR SHEATHING,
 STEEL STUD WALL,
 GYPSUM WALLBOARD.



PREMOLDED EXPANSION
 JOINT FILLER

3/8" MIN.

COMPRESSIBLE BACKER ROD
 AND SEALANT

INSULATION RETAINER

ADJUSTABLE WALL TIE



ARRISCRAFT
 INTERNATIONAL
 BUILDING STONE • BRICK • LIMESTONE

ARRISCRAFT • CADD

TITLE:

MOVEMENT JOINT

DATE DRAWN:
 08/30/04

SCALE:
 3"=1'-0"

DRAWN BY:
 LPS

DETAIL No:

SS AD04S

U140