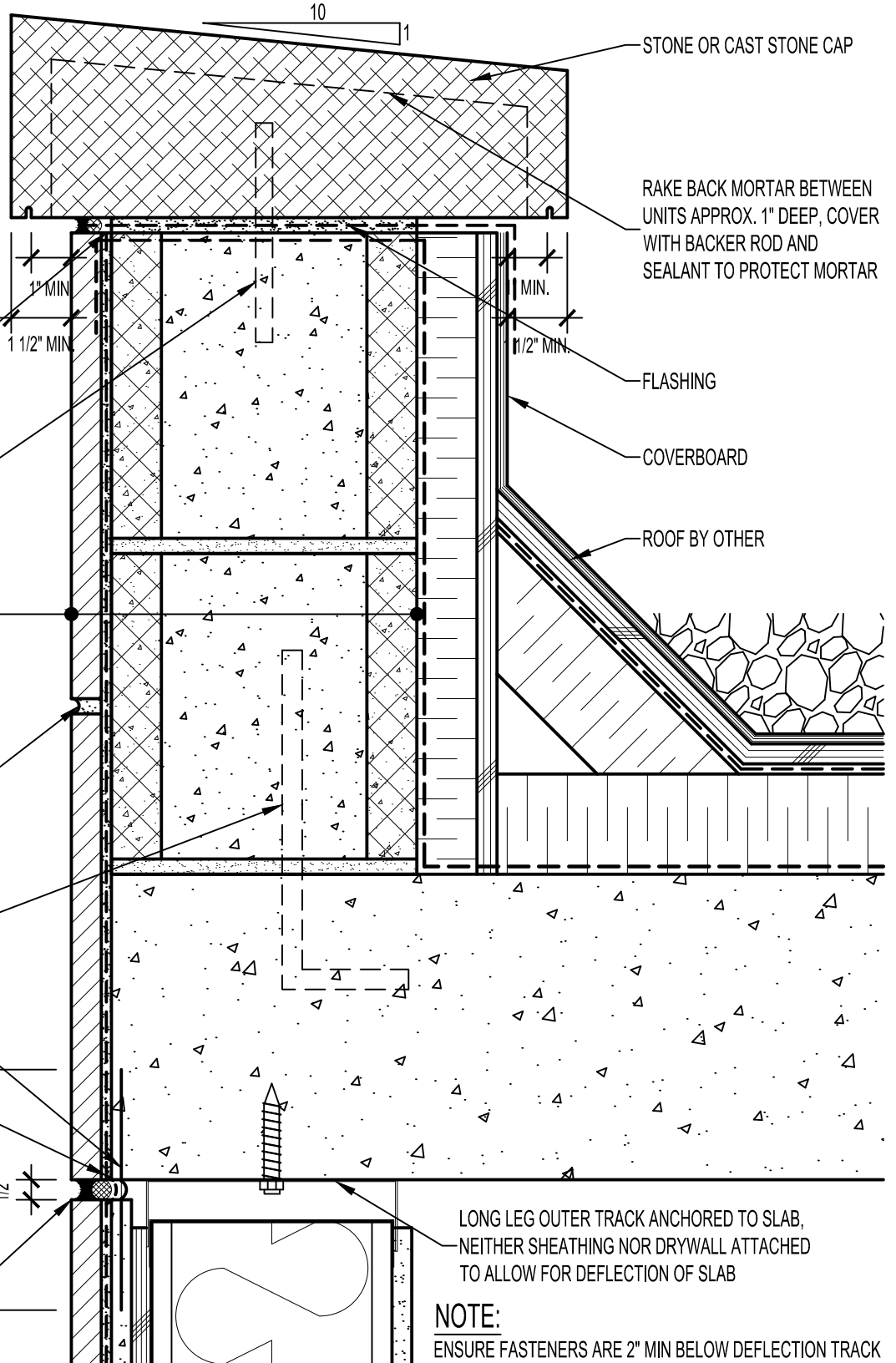


ARCHITECT NOTE:

1/2" MINIMUM DEFLECTION SPACE AT EACH FLOOR ACCOMMODATES 1/4" DISPLACEMENT. WIDER MOVEMENT JOINTS MAY BE REQUIRED BASED UPON ANTICIPATED MOVEMENTS OF STRUCTURAL ELEMENTS AND THE SEALANT PROPERTIES.



SEALANT AND BACKER ROD

MECHANICAL ANCHOR

CALCIUM SILICATE TILE UNIT, HI-BOND MASONRY VENEER MORTAR - POLYMER FORTIFIED, LATICRETE AIR & WATER BARRIER, CONCRETE MASONRY UNIT (CMU)

POINTING MORTAR

VERTICAL REINFORCING IF REQUIRED

WATERPROOFING FABRIC LEFT LOOSE FOR ACCOMMODATION OF SLAB EDGE MOVEMENT

COAT WATERPROOFING FABRIC WITH AIR / WATER BARRIER

MOVEMENT JOINT REFERENCE NOTE IN TOP LEFT CORNER

MOVEMENT JOINT SEALED WITH SILICONE SEALANT AND BACKER ROD

STONE OR CAST STONE CAP


RAKE BACK MORTAR BETWEEN UNITS APPROX. 1" DEEP, COVER WITH BACKER ROD AND SEALANT TO PROTECT MORTAR

FLASHING

COVERBOARD

ROOF BY OTHER

NOTE:
ENSURE FASTENERS ARE 2" MIN BELOW DEFLECTION TRACK

			ARRISCRAFT-CADD		DETAIL No: SS12SAT
DATE DRAWN: 03/02/15			SCALE: 3"=1'-0"		U122
DRAWN BY: TRI			TITLE: PARAPET TO WALL WITH STONE OR CAST STONE CAP		