

NOTE: REFER TO  
 WINDOW SILL: SS12SATU024-25  
 WINDOW HEAD: SS12SATU031

ATTACH SHEATHING WITH  
 APPROVED SCREWS  
 (TYPICAL @ EVERY STUD)

ATTACH CEMENT BOARD  
 WITH APPROVED SCREWS  
 (TYPICAL @ EVERY STUD)

GYPSUM WALLBOARD,  
 VAPOR BARRIER (LOCATION DEPENDENT  
 ON CLIMATE ZONE),  
 STEEL STUD WALL,  
 BATT INSULATION (THICKNESS  
 DEPENDENT ON REQUIRED R-VALUE),  
 EXTERIOR SHEATHING,  
 CEMENT BOARD,  
 LATICRETE AIR & WATER BARRIER,  
 HI-BOND MASONRY VENEER MORTAR -  
 POLYMER FORTIFIED,  
 CALCIUM SILICATE TILE UNIT

WOOD BLOCKING

WOOD BLOCKING

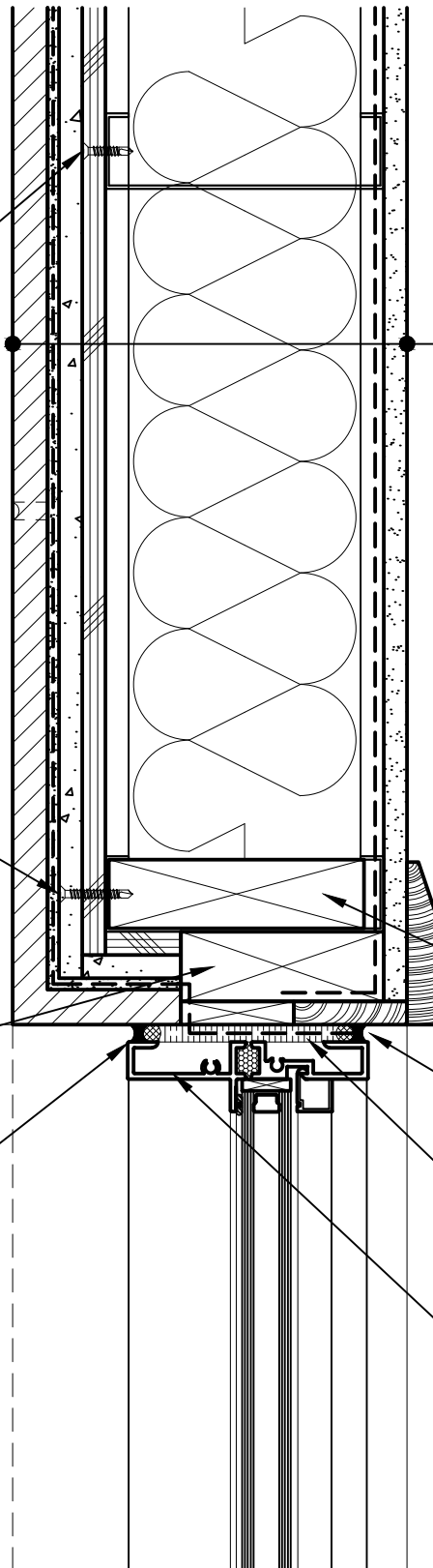
COMPRESSIBLE BACKER ROD AND  
 SEALANT ALL AROUND FRAME

COMPRESSIBLE BACKER  
 ROD AND SEALANT

SPRAY APPLIED FOAM INSULATING  
 AIR SEAL ALL AROUND FRAME

BULLNOSE OR SLOPED  
 CALCIUM SILICATE TILE  
 SILL UNIT c/w END DAMS

PREMANUFACTURED THERMALLY  
 BROKEN ALUMINUM WINDOW ASSEMBLY



**Arriscraft**  
 Building Stone · Brick · Limestone

**ARRISCRAFT-CADD**

DETAIL No:

SS12SAT

TITLE: WINDOW JAMB WITH  
 TILE SILL - END RETURN  
 TILE UNIT (PLAN VIEW)

**U043**

DATE DRAWN:  
 03/02/15

SCALE:  
 3"=1'-0"

DRAWN BY:  
 TRI