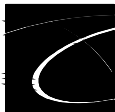
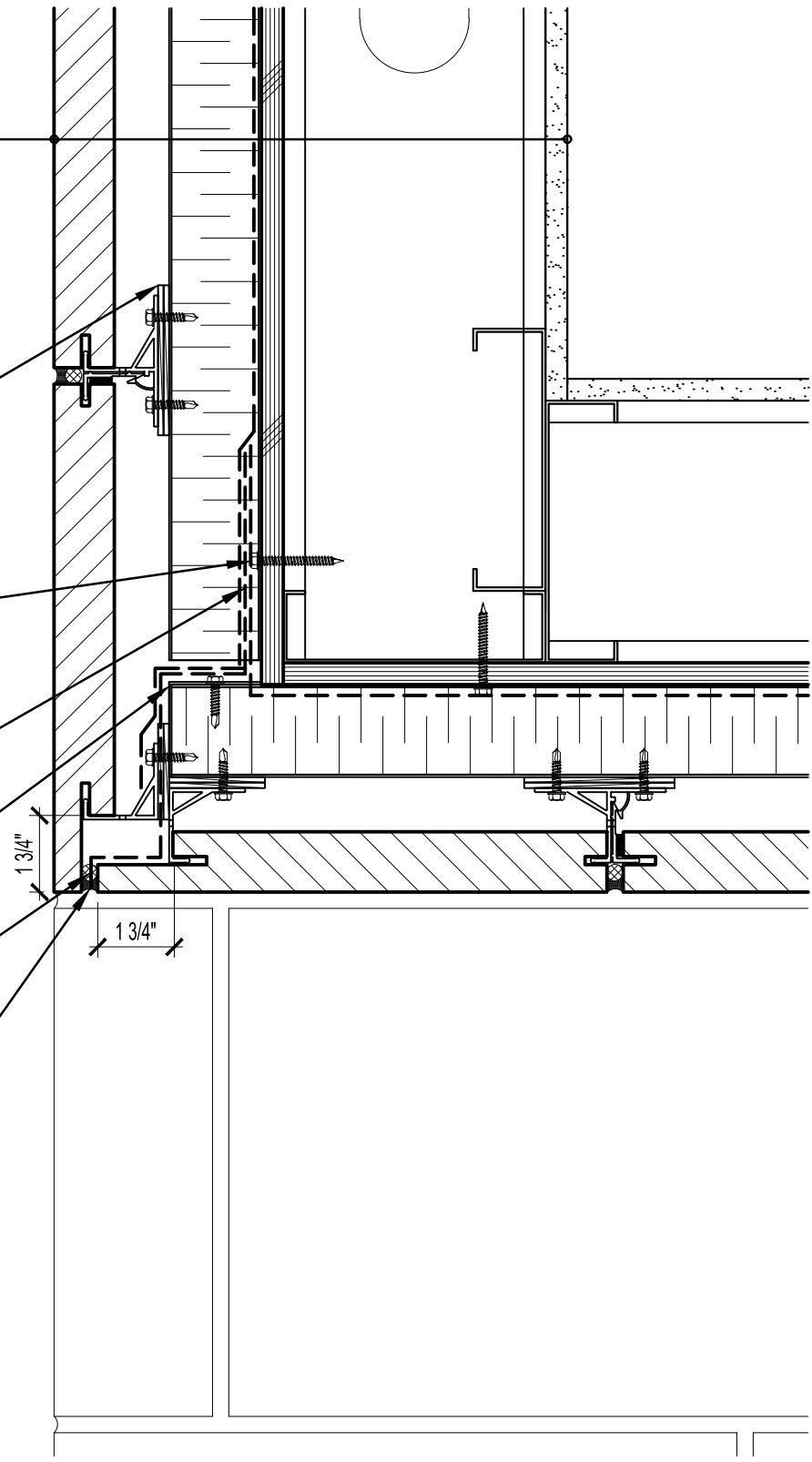


GYPSUM WALLBOARD,  
 STEEL STUD WALL,  
 STEEL STUD FURRING,  
 EXTERIOR SHEATHING,  
 AIR/VAPOR BARRIER MEMBRANE,  
 16 GAUGE Z-CHANNEL,  
 RIGID OR SEMI RIGID INSULATION  
 (THICKNESS DEPENDANT ON  
 REQUIRED R-VALUE),  
 ALUMINUM CHANNELS,  
 1" AIR SPACE,  
 CALCIUM SILICATE CLIP UNIT  
  
 REQUIRED SHIM TO SEPARATE  
 ALUMINUM CHANNEL FROM  
 Z-CHANNEL, MAX. SHIMS 3/4" THICK  
  
 Z-CHANNEL FASTENERS @ 16" O.C.  
 C/W SHIMS AS REQUIRED, MAX.  
 SHIMS 3/4" THICK  
  
 FLASHING MEMBRANE  
 ADHERED TO SUBSTRATE  
  
 SHEET METAL ANGLE ATTACHED  
 TO SOFFIT "Z" CHANNELS (ALL  
 SAME GAUGE)  
  
 COMPRESSIBLE BACKER  
 ROD AND SEALANT  
  
 UNOBSTRUCTED  
 WEEP SYSTEM @ 24" O/C



**ARRISCRAFT**  
 INTERNATIONAL  
 BUILDING STONE • BRICK • LIMESTONE

**ARRISCRAFT • CADD**

TITLE:

SOFFIT RETURN

DATE DRAWN:  
01/15/12

SCALE:  
3"=1'-0"

DRAWN BY:  
D.D.N.

DETAIL No:  
SS 12SU

**AC160**