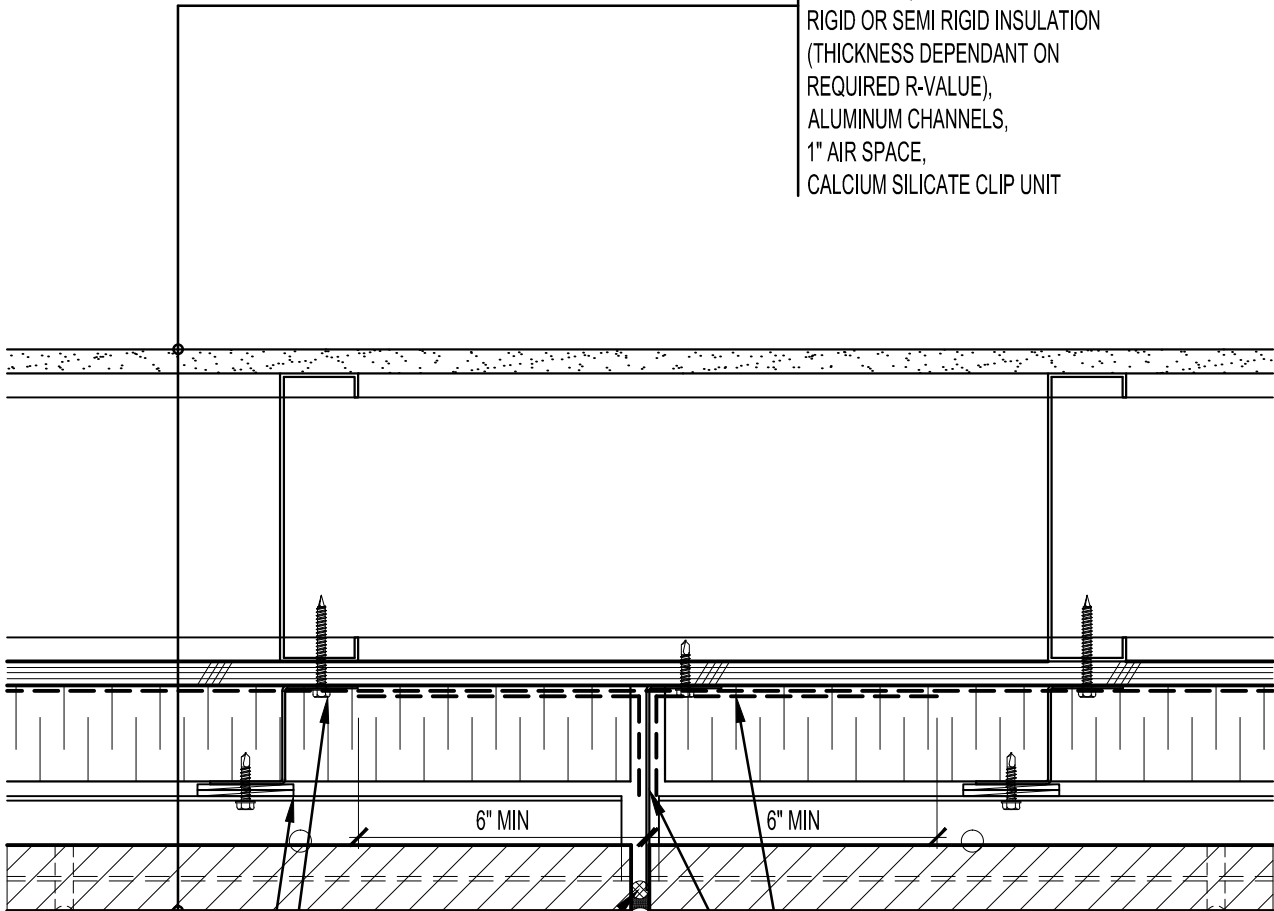


GYPSUM WALLBOARD,  
 STEEL STUD WALL,  
 EXTERIOR SHEATHING,  
 AIR/VAPOR BARRIER MEMBRANE,  
 Z-CHANNEL,  
 RIGID OR SEMI RIGID INSULATION  
 (THICKNESS DEPENDANT ON  
 REQUIRED R-VALUE),  
 ALUMINUM CHANNELS,  
 1" AIR SPACE,  
 CALCIUM SILICATE CLIP UNIT



REQUIRED SHIM TO  
 SEPARATE  
 ALUMINUM CHANNEL  
 FROM Z-CHANNEL, MAX  
 SHIMS 3/4" THICK  
 Z-CHANNEL FASTENERS  
 @ 16" O.C. C/W SHIMS AS  
 REQUIRED, MAX SHIMS  
 3/4" THICK  
 BACKER ROD  
 AND SEALANT

FLASHING ADHERED TO STAINLESS  
 STEEL METAL FLASHING TO SEAL  
 COMPARTMENT  
 CONTINUOUS STAINLESS STEEL  
 METAL FLASHING EMBEDDED IN  
 CONTINUOUS VERTICAL JOINT AND  
 SEALED WITH A GOOD QUALITY  
 BACKER ROD AND SEALANT TO  
 CREATE COMPARTMENTS - SPACED  
 NO MORE THEN 25'-0" APART



**ARRISCRAFT**  
 INTERNATIONAL  
 BUILDING STONE • BRICK • LIMESTONE

**ARRISCRAFT • CADD**

TITLE:  
**TYPICAL COMPARTMENTALIZATION  
 AND MOVEMENT JOINT DETAIL**

DATE DRAWN:  
 01/15/12

SCALE:  
 3"=1'-0"

DRAWN BY:  
 D.D.N.

DETAIL No:  
 SS 12S

**AC141**