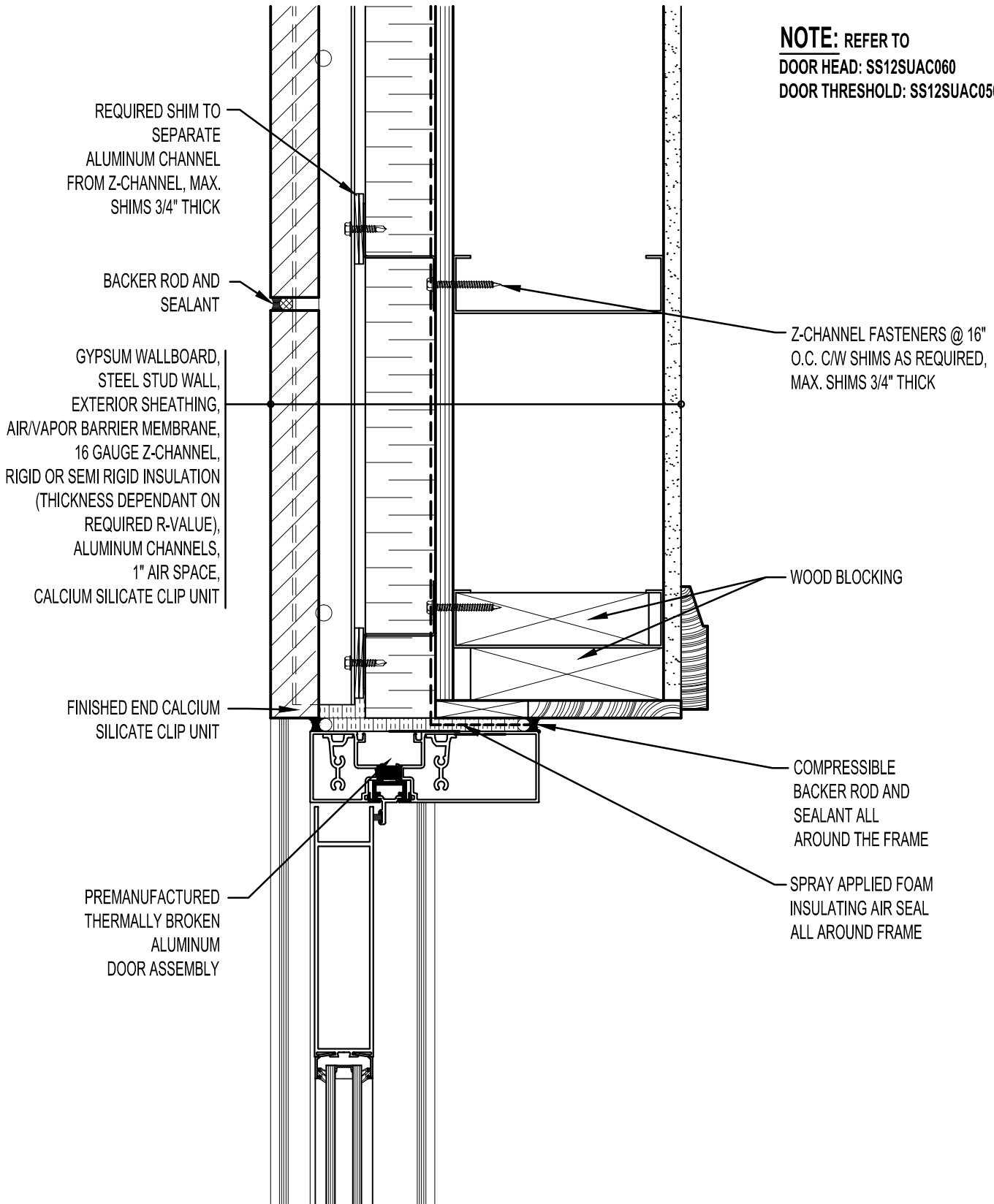


NOTE: REFER TO
 DOOR HEAD: SS12SUAC060
 DOOR THRESHOLD: SS12SUAC050



REQUIRED SHIM TO SEPARATE ALUMINUM CHANNEL FROM Z-CHANNEL, MAX. SHIMS 3/4" THICK

BACKER ROD AND SEALANT

GYPSUM WALLBOARD,
 STEEL STUD WALL,
 EXTERIOR SHEATHING,
 AIR/VAPOR BARRIER MEMBRANE,
 16 GAUGE Z-CHANNEL,
 RIGID OR SEMI RIGID INSULATION
 (THICKNESS DEPENDANT ON
 REQUIRED R-VALUE),
 ALUMINUM CHANNELS,
 1" AIR SPACE,
 CALCIUM SILICATE CLIP UNIT

Z-CHANNEL FASTENERS @ 16" O.C. C/W SHIMS AS REQUIRED, MAX. SHIMS 3/4" THICK

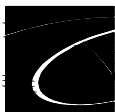
WOOD BLOCKING

FINISHED END CALCIUM SILICATE CLIP UNIT

COMPRESSIBLE BACKER ROD AND SEALANT ALL AROUND THE FRAME

PREMANUFACTURED THERMALLY BROKEN ALUMINUM DOOR ASSEMBLY

SPRAY APPLIED FOAM INSULATING AIR SEAL ALL AROUND FRAME



ARRISCRAFT
 INTERNATIONAL
 BUILDING STONE • BRICK • LIMESTONE

ARRISCRAFT • CADD

TITLE:

ALUMINUM DOOR
 JAMB (PLAN VIEW)

DATE DRAWN:
 01/15/12

SCALE:
 3"=1'-0"

DRAWN BY:
 D.D.N.

DETAIL No:
 SS 12SU

AC070