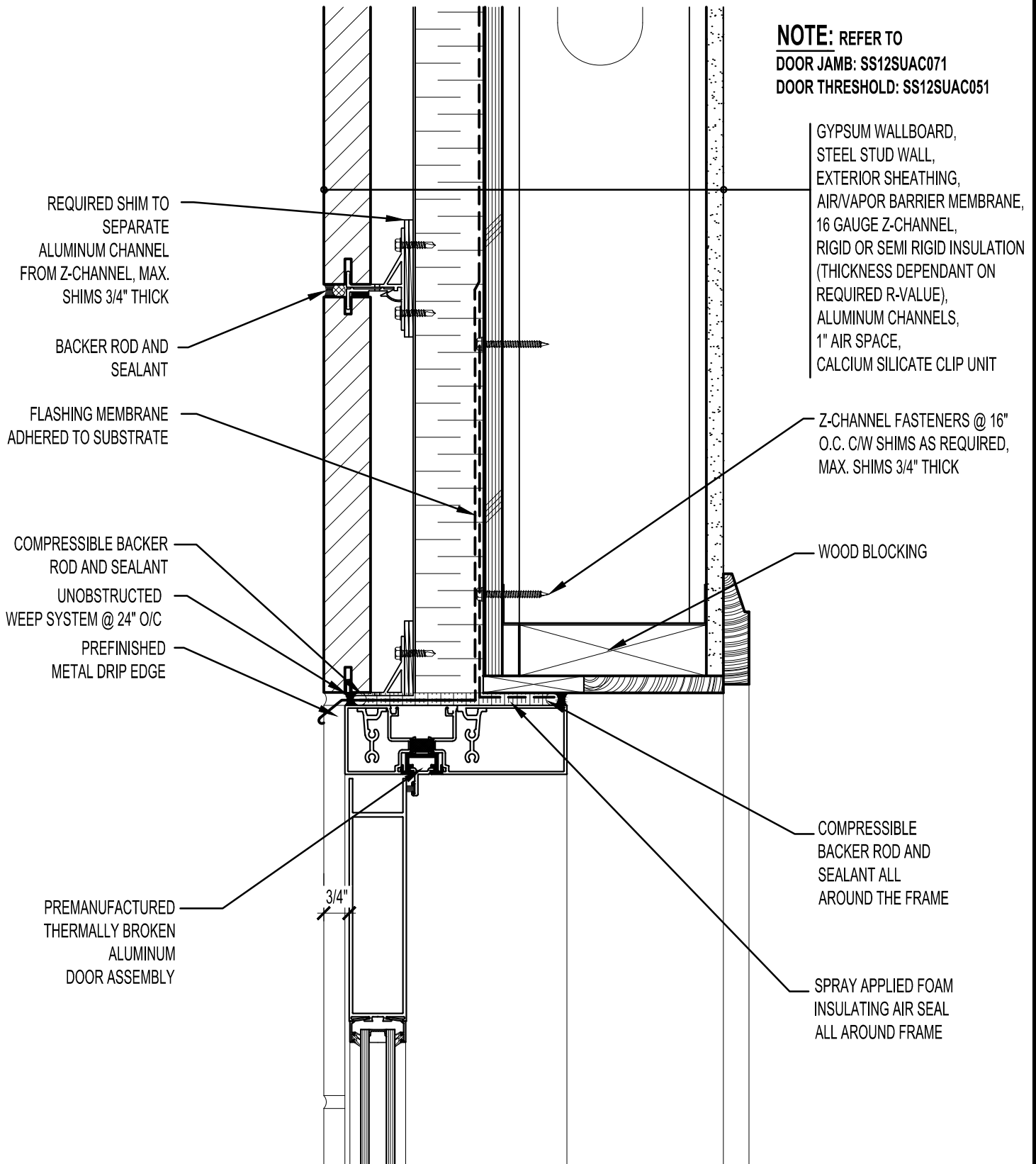


NOTE: REFER TO
DOOR JAMB: SS12SUAC071
DOOR THRESHOLD: SS12SUAC051



GYPSUM WALLBOARD,
 STEEL STUD WALL,
 EXTERIOR SHEATHING,
 AIR/VAPOR BARRIER MEMBRANE,
 16 GAUGE Z-CHANNEL,
 RIGID OR SEMI RIGID INSULATION
 (THICKNESS DEPENDANT ON
 REQUIRED R-VALUE),
 ALUMINUM CHANNELS,
 1" AIR SPACE,
 CALCIUM SILICATE CLIP UNIT

Z-CHANNEL FASTENERS @ 16"
 O.C. C/W SHIMS AS REQUIRED,
 MAX. SHIMS 3/4" THICK

WOOD BLOCKING

COMPRESSIBLE
 BACKER ROD AND
 SEALANT ALL
 AROUND THE FRAME

SPRAY APPLIED FOAM
 INSULATING AIR SEAL
 ALL AROUND FRAME

REQUIRED SHIM TO
 SEPARATE
 ALUMINUM CHANNEL
 FROM Z-CHANNEL, MAX.
 SHIMS 3/4" THICK

BACKER ROD AND
 SEALANT

FLASHING MEMBRANE
 ADHERED TO SUBSTRATE

COMPRESSIBLE BACKER
 ROD AND SEALANT

UNOBSTRUCTED
 WEEP SYSTEM @ 24" O/C

PREFINISHED
 METAL DRIP EDGE

PREMANUFACTURED
 THERMALLY BROKEN
 ALUMINUM
 DOOR ASSEMBLY

3/4"



ARRISCRAFT
 INTERNATIONAL
 BUILDING STONE • BRICK • LIMESTONE

ARRISCRAFT • CADD

TITLE:
**ALUMINUM DOOR
 HEAD - DOOR @ KERF**

DATE DRAWN:
 01/15/12

SCALE:
 3"=1'-0"

DRAWN BY:
 D.D.N.

DETAIL No:
 SS 12SU

AC061