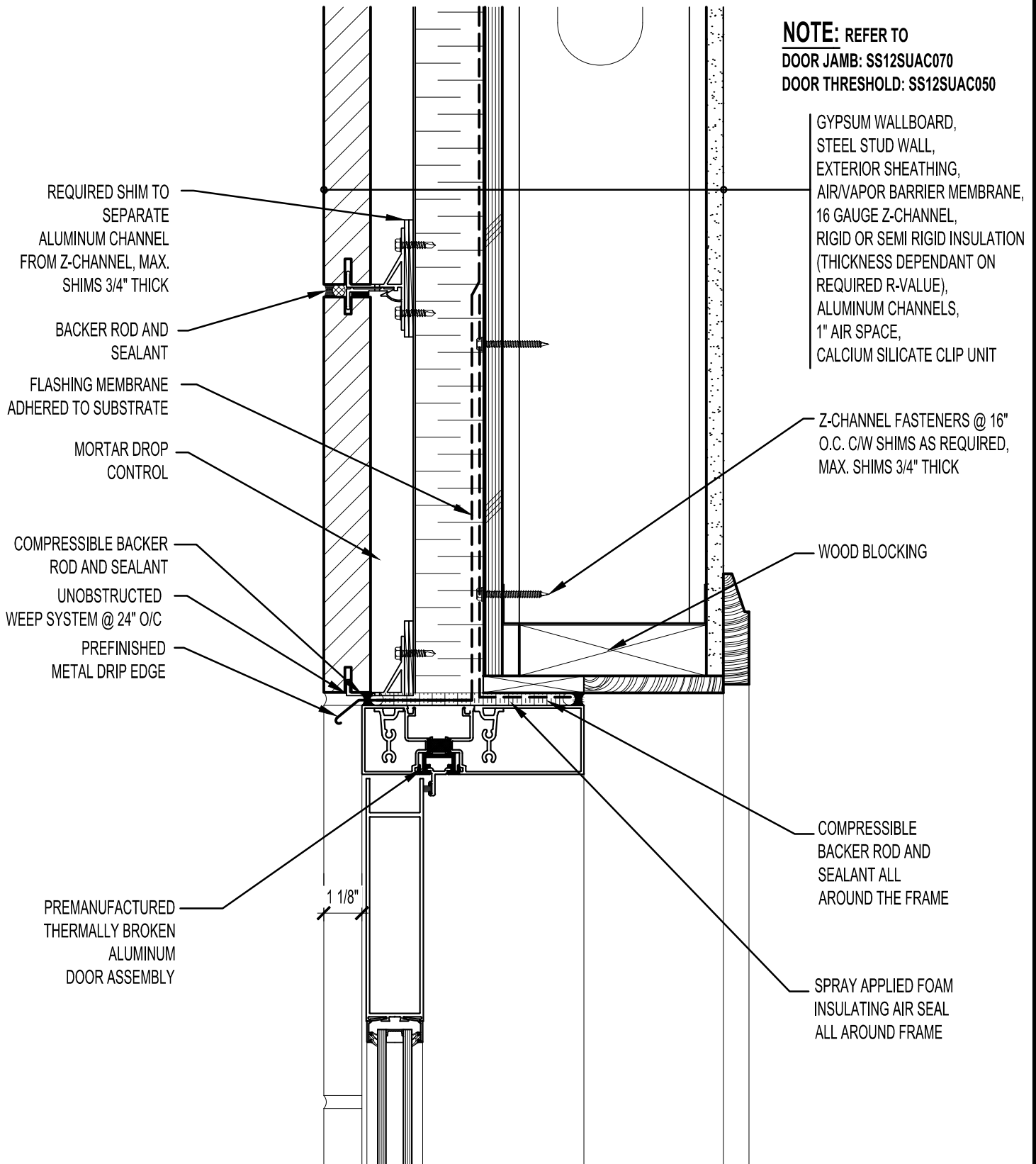


NOTE: REFER TO
DOOR JAMB: SS12SUAC070
DOOR THRESHOLD: SS12SUAC050



GYPSUM WALLBOARD,
 STEEL STUD WALL,
 EXTERIOR SHEATHING,
 AIR/VAPOR BARRIER MEMBRANE,
 16 GAUGE Z-CHANNEL,
 RIGID OR SEMI RIGID INSULATION
 (THICKNESS DEPENDANT ON
 REQUIRED R-VALUE),
 ALUMINUM CHANNELS,
 1" AIR SPACE,
 CALCIUM SILICATE CLIP UNIT

Z-CHANNEL FASTENERS @ 16"
 O.C. C/W SHIMS AS REQUIRED,
 MAX. SHIMS 3/4" THICK

WOOD BLOCKING

COMPRESSIBLE
 BACKER ROD AND
 SEALANT ALL
 AROUND THE FRAME

SPRAY APPLIED FOAM
 INSULATING AIR SEAL
 ALL AROUND FRAME

1 1/8"



ARRISCRAFT • CADD

TITLE:
**ALUMINUM DOOR
 HEAD**

DATE DRAWN:
 01/15/12

SCALE:
 3"=1'-0"

DRAWN BY:
 D.D.N.

DETAIL No:
 SS 12SU
AC060