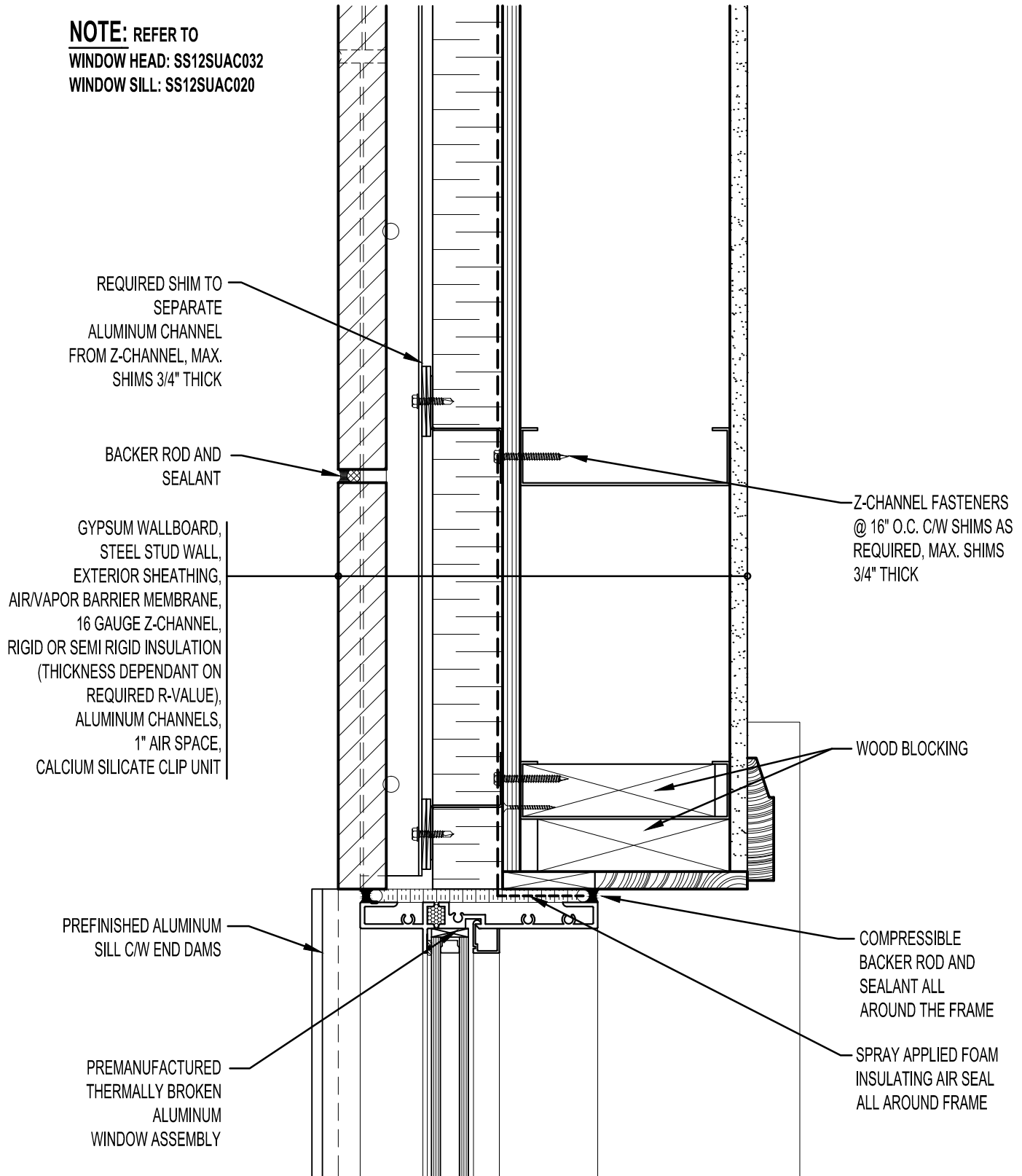


**NOTE:** REFER TO  
**WINDOW HEAD: SS12SUAC032**  
**WINDOW SILL: SS12SUAC020**



REQUIRED SHIM TO SEPARATE ALUMINUM CHANNEL FROM Z-CHANNEL, MAX. SHIMS 3/4" THICK

BACKER ROD AND SEALANT

GYPSUM WALLBOARD, STEEL STUD WALL, EXTERIOR SHEATHING, AIR/VAPOR BARRIER MEMBRANE, 16 GAUGE Z-CHANNEL, RIGID OR SEMI RIGID INSULATION (THICKNESS DEPENDANT ON REQUIRED R-VALUE), ALUMINUM CHANNELS, 1" AIR SPACE, CALCIUM SILICATE CLIP UNIT

Z-CHANNEL FASTENERS @ 16" O.C. C/W SHIMS AS REQUIRED, MAX. SHIMS 3/4" THICK

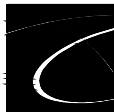
WOOD BLOCKING

PREFINISHED ALUMINUM SILL C/W END DAMS

COMPRESSIBLE BACKER ROD AND SEALANT ALL AROUND THE FRAME

PREMANUFACTURED THERMALLY BROKEN ALUMINUM WINDOW ASSEMBLY

SPRAY APPLIED FOAM INSULATING AIR SEAL ALL AROUND FRAME



**ARRISCRAFT**  
 INTERNATIONAL  
 BUILDING STONE • BRICK • LIMESTONE

**ARRISCRAFT • CADD**

TITLE:  
**WINDOW JAMB WITH ALUMINUM SILL**  
**- WINDOW @ KERF (PLAN VIEW)**

DATE DRAWN:  
 01/15/12

SCALE:  
 3"=1'-0"

DRAWN BY:  
 D.D.N.

DETAIL No:  
 SS 12SU

**AC041**