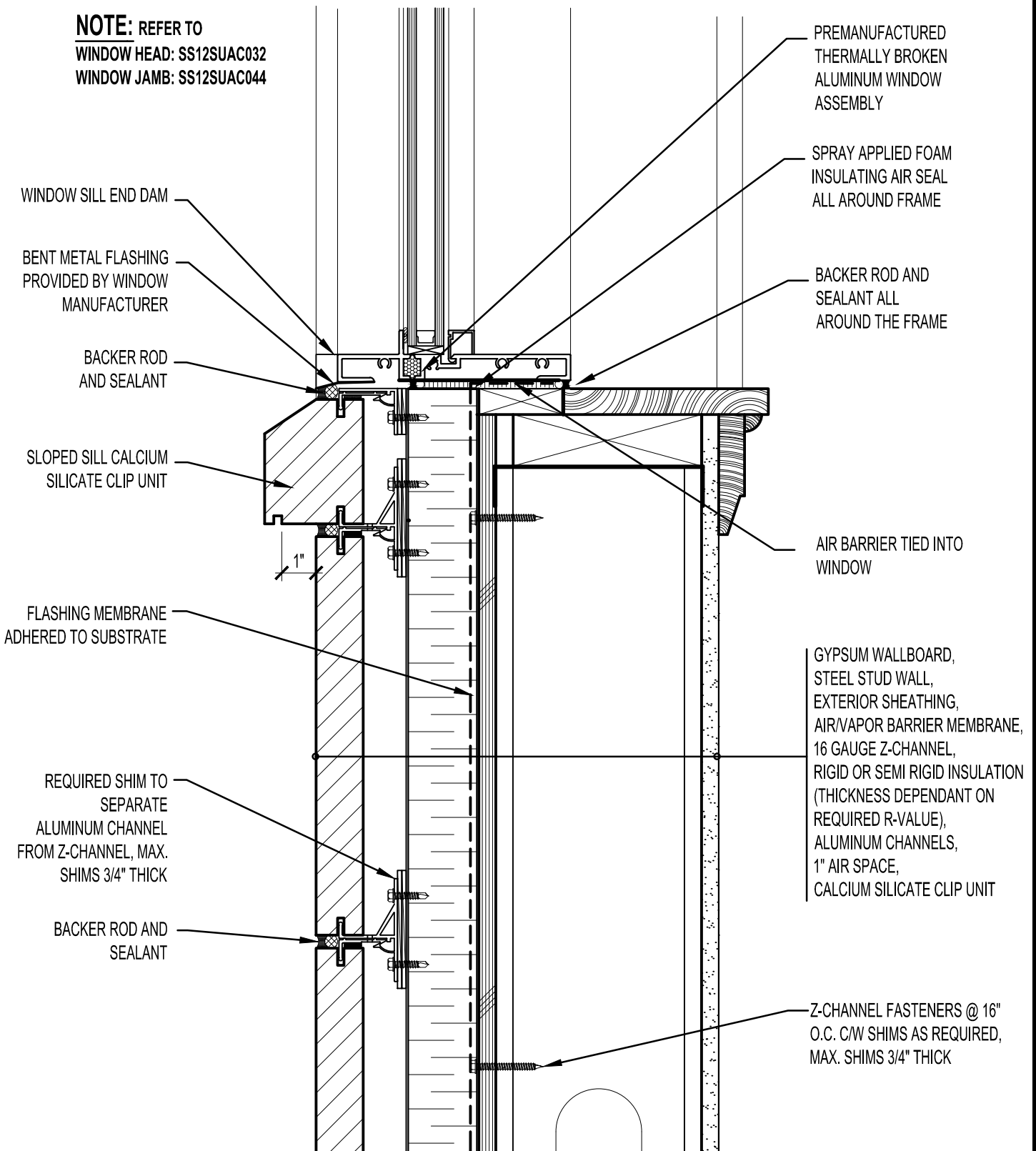


NOTE: REFER TO
WINDOW HEAD: SS12SUAC032
WINDOW JAMB: SS12SUAC044



PREMANUFACTURED
 THERMALLY BROKEN
 ALUMINUM WINDOW
 ASSEMBLY

SPRAY APPLIED FOAM
 INSULATING AIR SEAL
 ALL AROUND FRAME

BACKER ROD AND
 SEALANT ALL
 AROUND THE FRAME

AIR BARRIER TIED INTO
 WINDOW

GYPSUM WALLBOARD,
 STEEL STUD WALL,
 EXTERIOR SHEATHING,
 AIR/VAPOR BARRIER MEMBRANE,
 16 GAUGE Z-CHANNEL,
 RIGID OR SEMI RIGID INSULATION
 (THICKNESS DEPENDANT ON
 REQUIRED R-VALUE),
 ALUMINUM CHANNELS,
 1" AIR SPACE,
 CALCIUM SILICATE CLIP UNIT

Z-CHANNEL FASTENERS @ 16"
 O.C. C/W SHIMS AS REQUIRED,
 MAX. SHIMS 3/4" THICK

WINDOW SILL END DAM

BENT METAL FLASHING
 PROVIDED BY WINDOW
 MANUFACTURER

BACKER ROD
 AND SEALANT

SLOPED SILL CALCIUM
 SILICATE CLIP UNIT

FLASHING MEMBRANE
 ADHERED TO SUBSTRATE

REQUIRED SHIM TO
 SEPARATE
 ALUMINUM CHANNEL
 FROM Z-CHANNEL, MAX.
 SHIMS 3/4" THICK

BACKER ROD AND
 SEALANT



ARRISCRAFT
 INTERNATIONAL
 BUILDING STONE • BRICK • LIMESTONE

ARRISCRAFT • CADD

TITLE:
**WATERTABLE WINDOW
 SILL - WINDOW @ KERF**

DATE DRAWN:
 01/15/12

SCALE:
 3"=1'-0"

DRAWN BY:
 D.D.N.

DETAIL No:
 SS 12SU

AC025