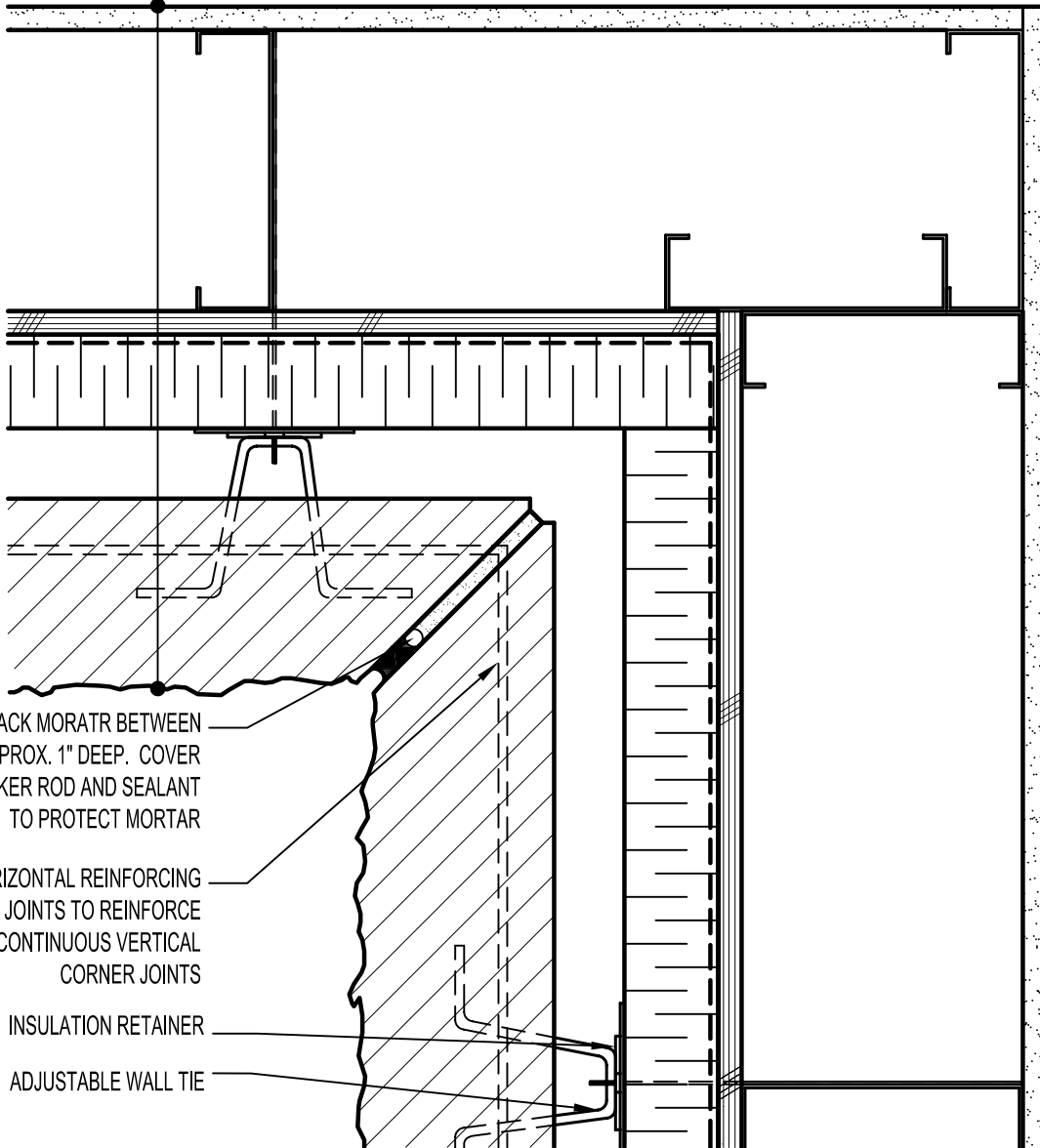


GYPSUM WALLBOARD,
 STEEL STUD WALL,
 EXTERIOR SHEATHING,
 AIR/VAPOR BARRIER
 MEMBRANE,
 RIGID OR SEMI-RIGID
 INSULATION (THICKNESS
 DEPENDANT ON REQUIRED
 R-VALUE),
 MIN. 1" AIR SPACE,
 CALCIUM SILICATE MASONRY UNIT (CSMU).



RAKE BACK MORTAR BETWEEN
 UNITS APPROX. 1" DEEP. COVER
 WITH BACKER ROD AND SEALANT
 TO PROTECT MORTAR

HORIZONTAL REINFORCING
 IN BED JOINTS TO REINFORCE
 CONTINUOUS VERTICAL
 CORNER JOINTS

INSULATION RETAINER

ADJUSTABLE WALL TIE



ARRISCRAFT
 INTERNATIONAL
 BUILDING STONE • BRICK • LIMESTONE

ARRISCRAFT • CADD

TITLE:

INSIDE MITERED CORNER

DATE DRAWN:
 08/30/04

SCALE:
 3"=1'-0"

DRAWN BY:
 LPS

DETAIL No:

SS 12R

U151