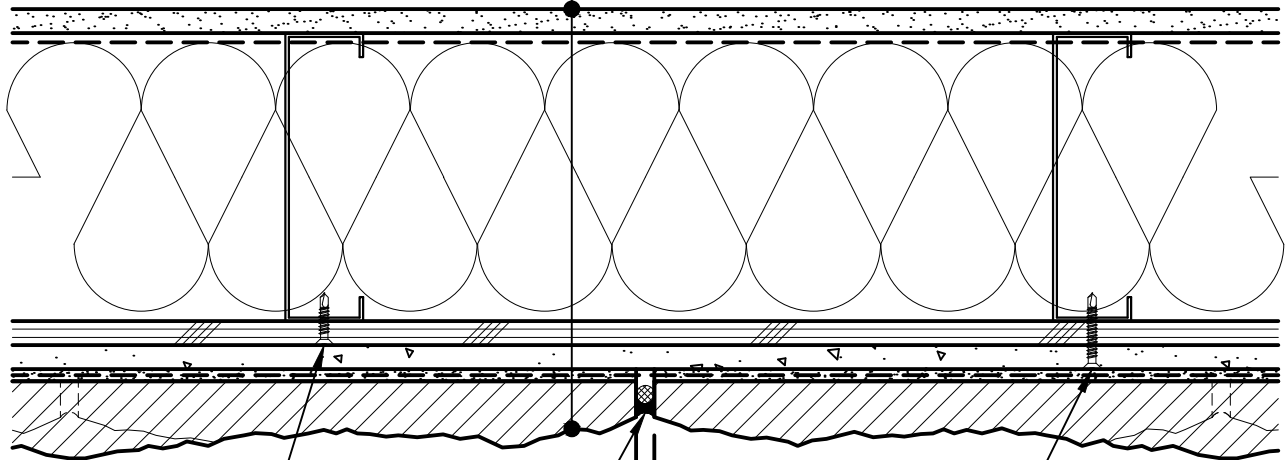


GYPSUM WALLBOARD,
 VAPOR BARRIER (LOCATION
 DEPENDENT ON CLIMATE ZONE),
 STEEL STUD WALL,
 BATT INSULATION (THICKNESS
 DEPENDENT ON REQUIRED R-VALUE),
 EXTERIOR SHEATHING,
 CEMENT BOARD,
 LATICRETE AIR & WATER BARRIER,
 HI-BOND MASONRY VENEER MORTAR -
 POLYMER FORTIFIED,
 CALCIUM SILICATE TILE UNIT



ATTACH SHEATHING WITH
 APPROVED SCREWS
 (TYPICAL @ EVERY STUD)

MOVEMENT JOINT SEALED
 WITH SILICONE SEALANT
 AND BACKER ROD

$\frac{3}{8}$ " MIN.

ATTACH CEMENT BOARD
 WITH APPROVED SCREWS
 (TYPICAL @ EVERY STUD)

Arriscraft
 Building Stone · Brick · Limestone

ARRISCRAFT-CADD

DETAIL No:
 SS12RAT

TITLE:
 VERTICAL EXPANSION
 JOINT DETAIL

U141

DATE DRAWN: 03/02/15	SCALE: 3"=1'-0"	DRAWN BY: TRI
-------------------------	--------------------	------------------