

POINTING MORTAR

CALCIUM SILICATE TILE UNIT,  
HI-BOND MASONRY VENEER MORTAR -  
POLYMER FORTIFIED,  
LATICRETE AIR & WATER BARRIER,  
CEMENT BOARD,  
EXTERIOR SHEATHING,  
STEEL STUD WALL,  
BATT INSULATION (THICKNESS  
DEPENDENT ON REQUIRED R-VALUE),  
VAPOR BARRIER (LOCATION  
DEPENDENT ON CLIMATE ZONE),  
GYPSUM WALLBOARD

COMPRESSIBLE BACKER  
ROD AND SEALANT

RAKE BACK MORTAR BETWEEN  
UNITS APPROX. 3/4" DEEP.  
COVER w/ BACKER ROD AND  
SEALANT TO PROTECT MORTAR

SLOPED CALCIUM SILICATE  
WATERTABLE UNIT

MASONRY TIE OR MECHANICAL  
ANCHOR IN HEAD JOINT

1" MIN

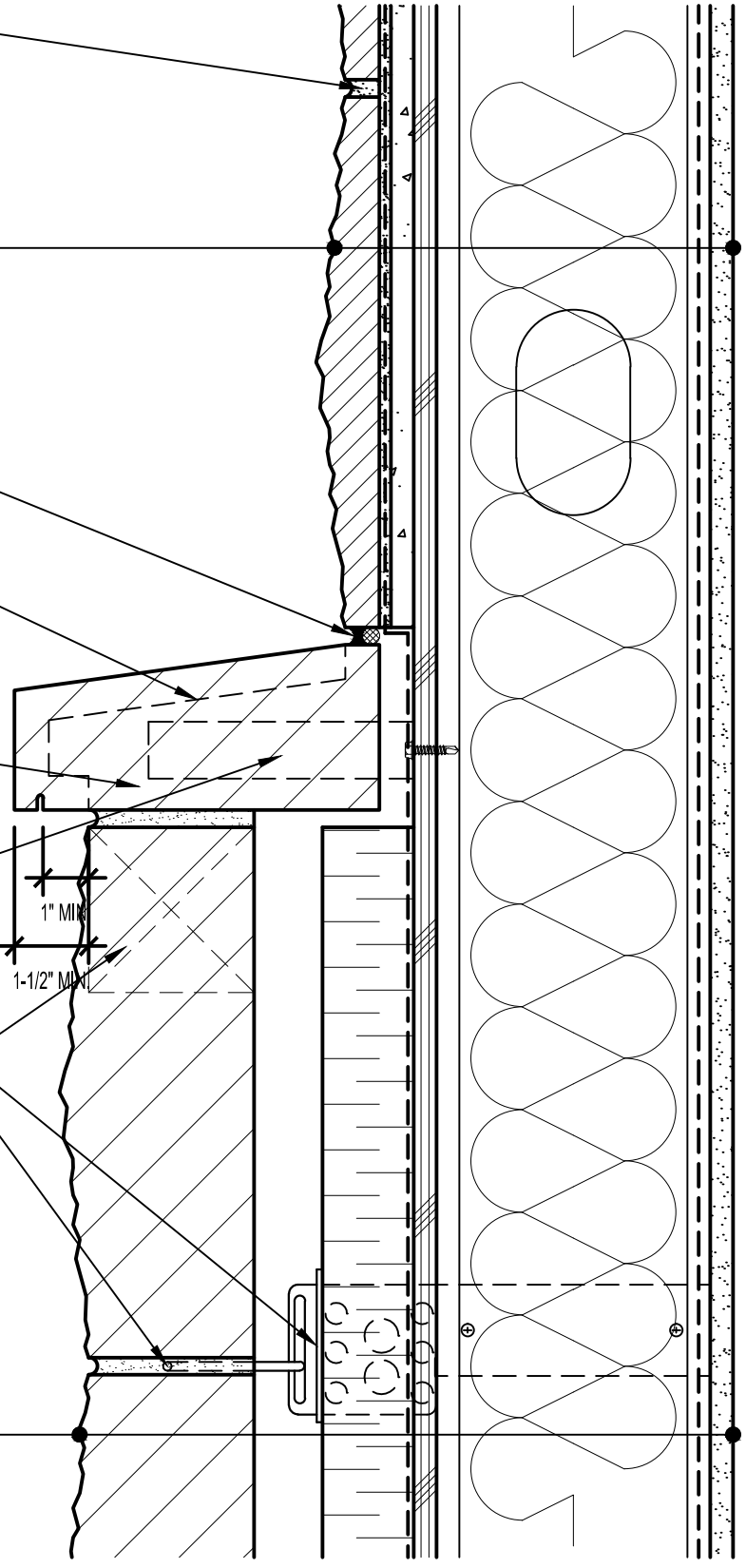
1-1/2" MIN


VENT @ 24" o.c.

INSULATION RETAINER

ADJUSTABLE WALL TIE

CALCIUM SILICATE MASONRY UNIT,  
MIN. 1" AIR SPACE,  
RIGID INSULATION (THICKNESS  
DEPENDENT ON REQUIRED R-VALUE),  
LATICRETE AIR & WATER BARRIER,  
EXTERIOR SHEATHING,  
STEEL STUD WALL,  
BATT INSULATION (THICKNESS  
DEPENDENT ON REQUIRED R-VALUE),  
VAPOR BARRIER (LOCATION  
DEPENDENT ON CLIMATE ZONE),  
GYPSUM WALLBOARD



			<b>ARRISCRAFT-CADD</b>		DETAIL No: SS12RAT
DATE DRAWN: 03/02/15			SCALE: 3"=1'-0"		<b>U107</b>
DRAWN BY: TRI			TITLE: FULL-BED / THIN ADHERED CALCIUM SILICATE TRANSITION (SLOPED WATERTABLE)		