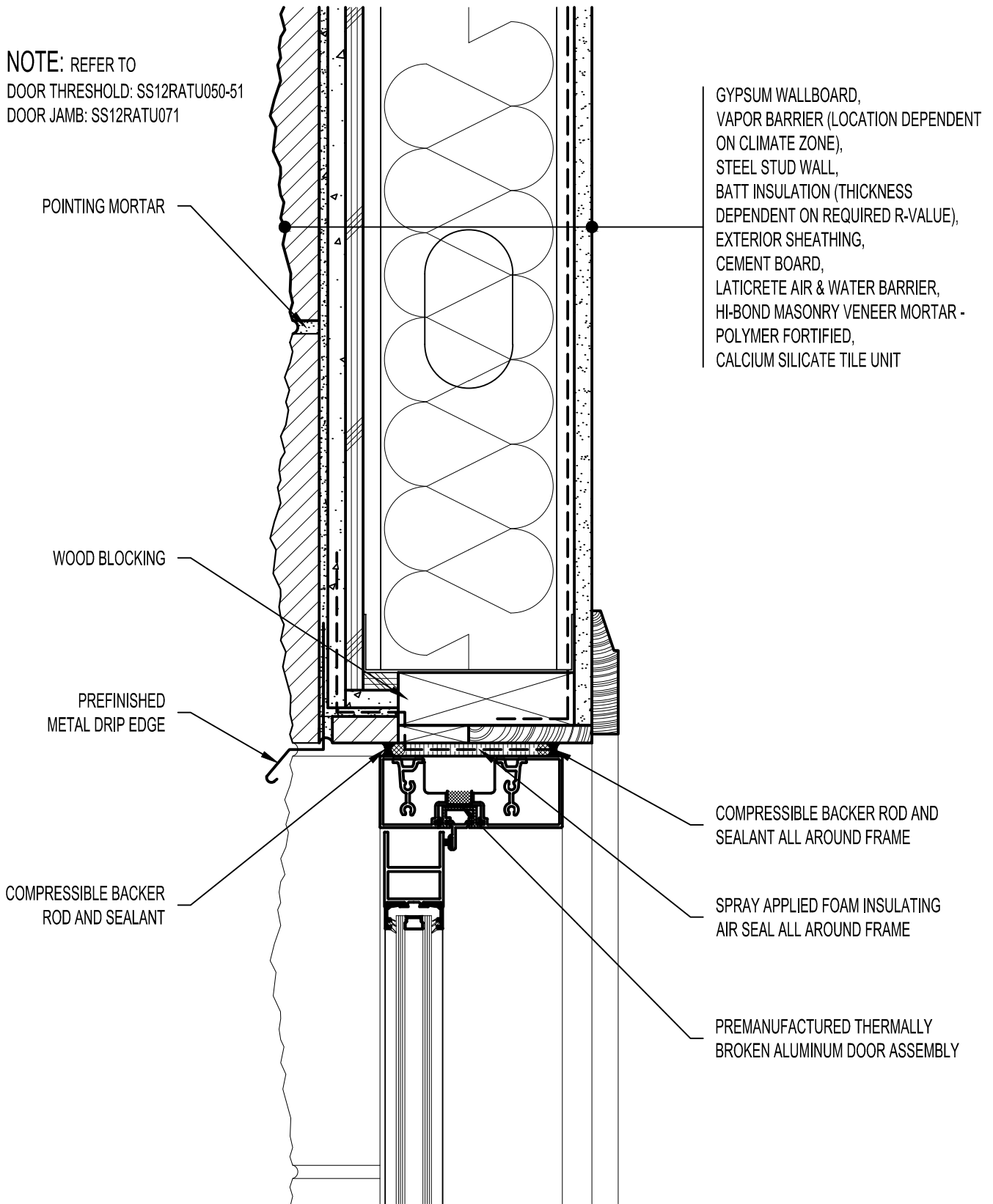


NOTE: REFER TO
 DOOR THRESHOLD: SS12RATU050-51
 DOOR JAMB: SS12RATU071



POINTING MORTAR

WOOD BLOCKING

PREFINISHED
 METAL DRIP EDGE

COMPRESSIBLE BACKER
 ROD AND SEALANT

GYPSUM WALLBOARD,
 VAPOR BARRIER (LOCATION DEPENDENT
 ON CLIMATE ZONE),
 STEEL STUD WALL,
 BATT INSULATION (THICKNESS
 DEPENDENT ON REQUIRED R-VALUE),
 EXTERIOR SHEATHING,
 CEMENT BOARD,
 LATICRETE AIR & WATER BARRIER,
 HI-BOND MASONRY VENEER MORTAR -
 POLYMER FORTIFIED,
 CALCIUM SILICATE TILE UNIT

COMPRESSIBLE BACKER ROD AND
 SEALANT ALL AROUND FRAME

SPRAY APPLIED FOAM INSULATING
 AIR SEAL ALL AROUND FRAME

PREMANUFACTURED THERMALLY
 BROKEN ALUMINUM DOOR ASSEMBLY

Arriscraft
 Building Stone · Brick · Limestone

ARRISCRAFT-CADD

DETAIL No:

SS12RAT

TITLE:

ALUMINUM DOOR HEAD -
 RECESSED DOOR

U061

DATE DRAWN:
 03/02/15

SCALE:
 3"=1'-0"

DRAWN BY:
 TRI