

NOTE: REFER TO  
 WINDOW SILL: SS12RATU023  
 WINDOW HEAD: SS12RATU031

ATTACH SHEATHING WITH  
 APPROVED SCREWS  
 (TYPICAL @ EVERY STUD)

ATTACH CEMENT BOARD  
 WITH APPROVED SCREWS  
 (TYPICAL @ EVERY STUD)

GYPSUM WALLBOARD,  
 VAPOR BARRIER (LOCATION DEPENDENT  
 ON CLIMATE ZONE),  
 STEEL STUD WALL,  
 BATT INSULATION (THICKNESS  
 DEPENDENT ON REQUIRED R-VALUE),  
 EXTERIOR SHEATHING,  
 CEMENT BOARD,  
 LATICRETE AIR & WATER BARRIER,  
 HI-BOND MASONRY VENEER MORTAR -  
 POLYMER FORTIFIED,  
 CALCIUM SILICATE TILE UNIT

WOOD BLOCKING

COMPRESSIBLE BACKER ROD AND  
 SEALANT ALL AROUND FRAME

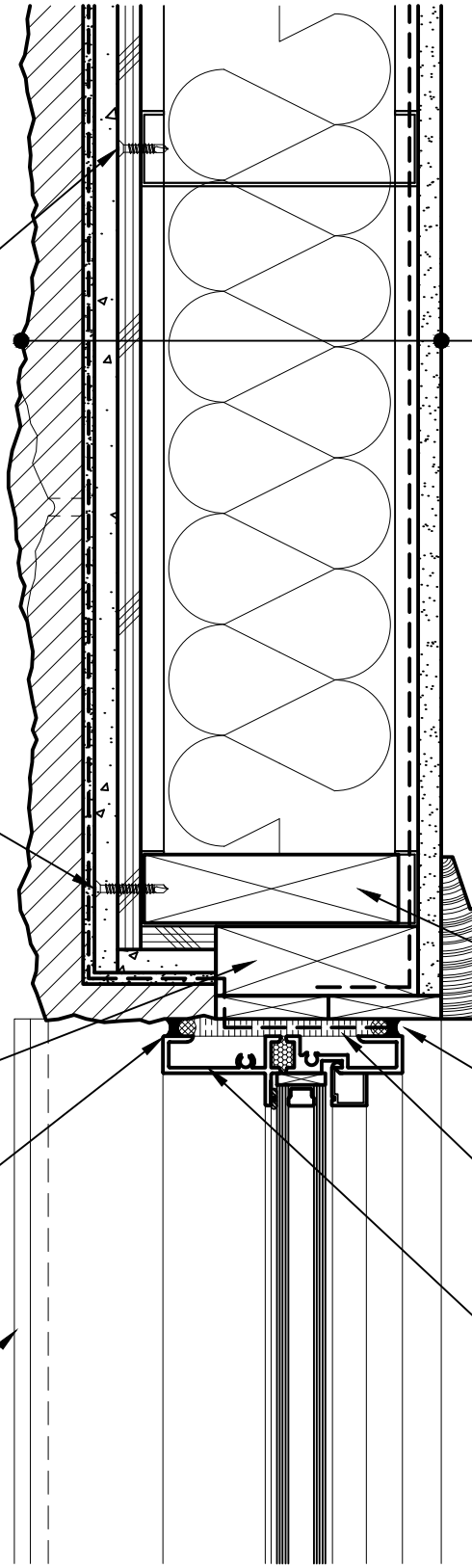
SPRAY APPLIED FOAM INSULATING  
 AIR SEAL ALL AROUND FRAME

PREMANUFACTURED THERMALLY  
 BROKEN ALUMINUM WINDOW ASSEMBLY

WOOD BLOCKING

COMPRESSIBLE BACKER  
 ROD AND SEALANT

PREFINISHED ALUMINUM  
 SILL c/w END DAMS



**Arriscraft**  
 Building Stone · Brick · Limestone

**ARRISCRAFT-CADD**

DETAIL No:

SS12RAT

TITLE: WINDOW JAMB WITH  
 ALUMINUM SILL - END RETURN  
 TILE UNIT (PLAN VIEW)

**U042**

DATE DRAWN:  
 03/02/15

SCALE:  
 3"=1'-0"

DRAWN BY:  
 TRI