

NOTE: REFER TO  
 WINDOW SILL: SS12RATU021-22  
 WINDOW HEAD: SS12RATU030

ATTACH SHEATHING WITH  
 APPROVED SCREWS  
 (TYPICAL @ EVERY STUD)

ATTACH CEMENT BOARD  
 WITH APPROVED SCREWS  
 (TYPICAL @ EVERY STUD)

WOOD BLOCKING

COMPRESSIBLE BACKER  
 ROD AND SEALANT

BULLNOSE OR SLOPED  
 CALCIUM SILICATE TILE  
 UNIT c/w END DAMS

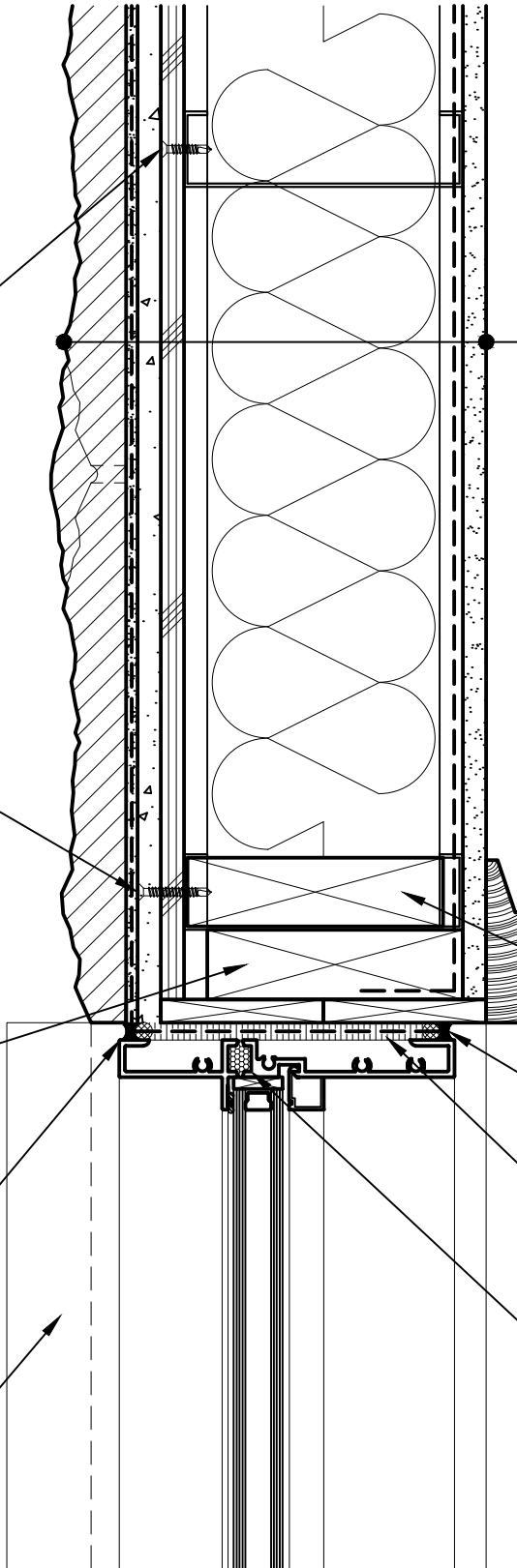
GYPSUM WALLBOARD,  
 VAPOR BARRIER (LOCATION DEPENDENT  
 ON CLIMATE ZONE),  
 STEEL STUD WALL,  
 BATT INSULATION (THICKNESS  
 DEPENDENT ON REQUIRED R-VALUE),  
 EXTERIOR SHEATHING,  
 CEMENT BOARD,  
 LATICRETE AIR & WATER BARRIER,  
 HI-BOND MASONRY VENEER MORTAR -  
 POLYMER FORTIFIED,  
 CALCIUM SILICATE TILE UNIT

WOOD BLOCKING

COMPRESSIBLE BACKER ROD AND  
 SEALANT ALL AROUND FRAME

SPRAY APPLIED FOAM INSULATING  
 AIR SEAL ALL AROUND FRAME

PREMANUFACTURED THERMALLY  
 BROKEN ALUMINUM WINDOW ASSEMBLY



**Arriscraft**  
 Building Stone · Brick · Limestone

**ARRISCRAFT-CADD**

DETAIL No:

SS12RAT

TITLE:

WINDOW JAMB WITH  
 TILE SILL (PLAN VIEW)

**U041**

DATE DRAWN:  
 03/02/15

SCALE:  
 3"=1'-0"

DRAWN BY:  
 TRI