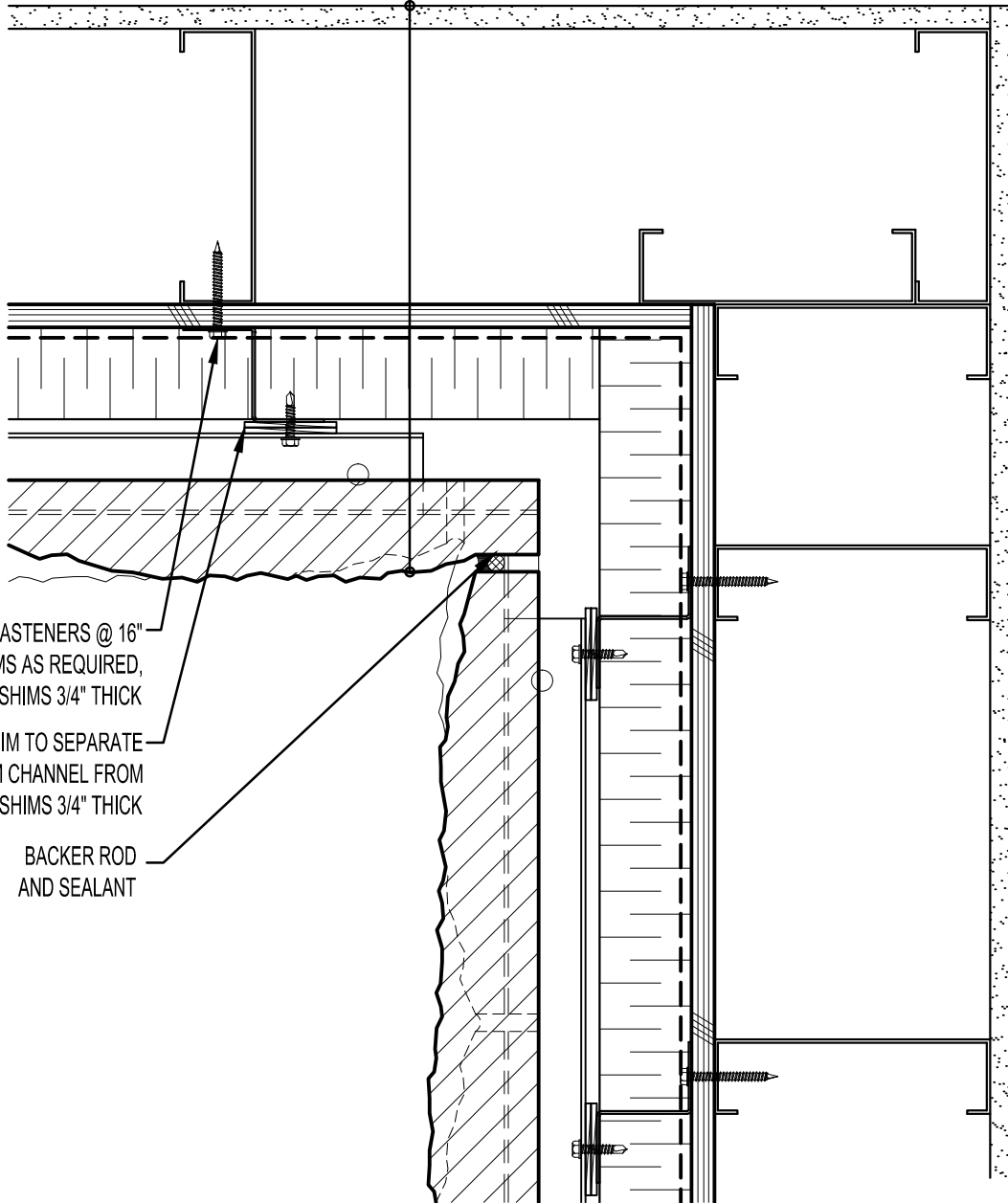


GYPSUM WALLBOARD,
 STEEL STUD WALL,
 EXTERIOR SHEATHING,
 AIR/VAPOR BARRIER MEMBRANE,
 16 GAUGE Z-CHANNEL,
 RIGID OR SEMI RIGID INSULATION
 (THICKNESS DEPENDANT ON
 REQUIRED R-VALUE),
 ALUMINUM CHANNELS,
 1" AIR SPACE,
 CALCIUM SILICATE CLIP UNIT



Z-CHANNEL FASTENERS @ 16"
 O.C. C/W SHIMS AS REQUIRED,
 MAX. SHIMS 3/4" THICK
 REQUIRED SHIM TO SEPARATE
 ALUMINUM CHANNEL FROM
 Z-CHANNEL, MAX. SHIMS 3/4" THICK
 BACKER ROD
 AND SEALANT



ARRISCRAFT
 INTERNATIONAL
 BUILDING STONE • BRICK • LIMESTONE

ARRISCRAFT • CADD

TITLE:
 TYPICAL INSIDE BONDED
 CORNER

DATE DRAWN:
 01/15/12

SCALE:
 3"=1'-0"

DRAWN BY:
 D.D.N.

DETAIL No:
 SS 12RU

AC153