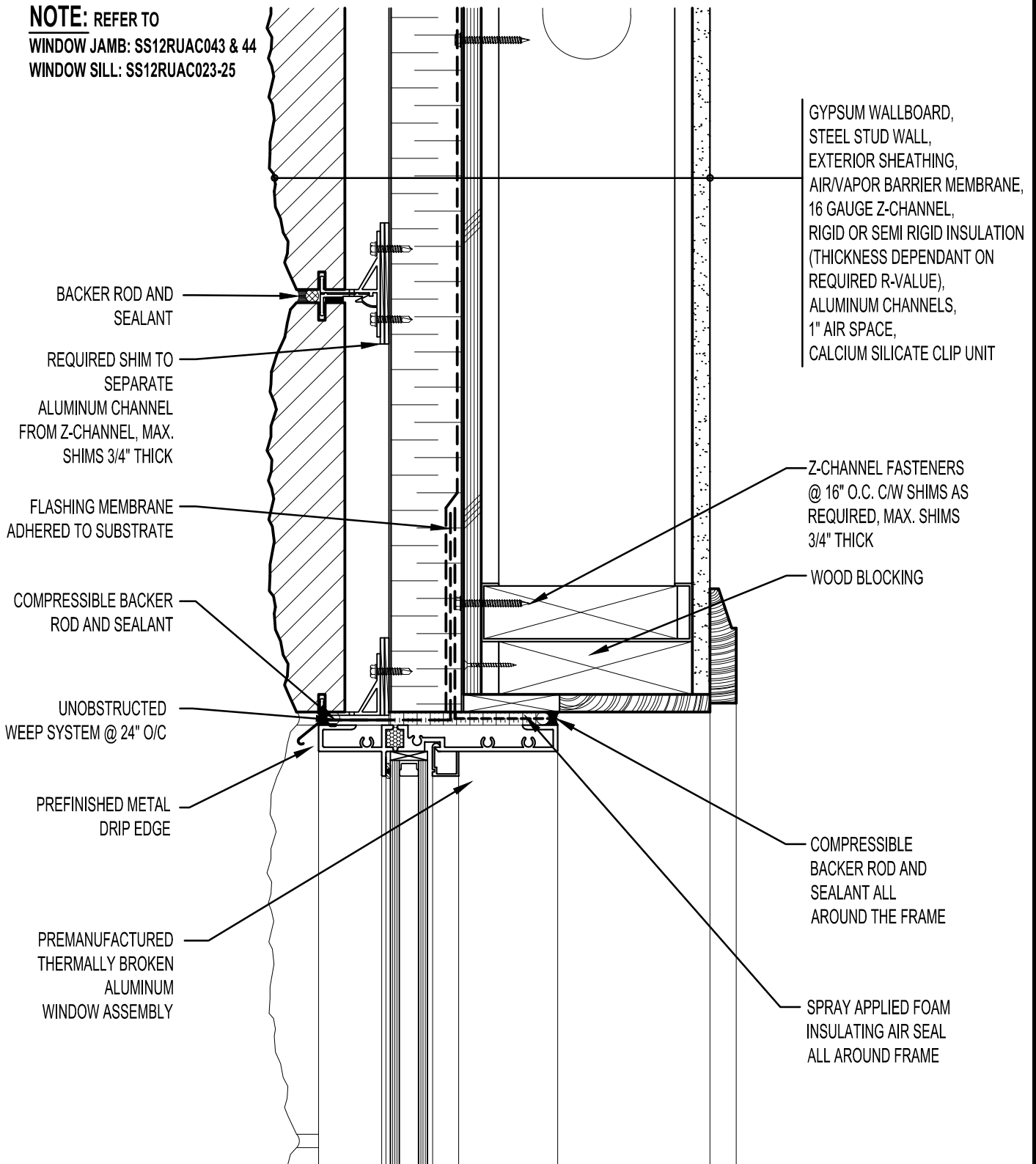


NOTE: REFER TO
 WINDOW JAMB: SS12RUAC043 & 44
 WINDOW SILL: SS12RUAC023-25



GYPSUM WALLBOARD,
 STEEL STUD WALL,
 EXTERIOR SHEATHING,
 AIR/VAPOR BARRIER MEMBRANE,
 16 GAUGE Z-CHANNEL,
 RIGID OR SEMI RIGID INSULATION
 (THICKNESS DEPENDANT ON
 REQUIRED R-VALUE),
 ALUMINUM CHANNELS,
 1" AIR SPACE,
 CALCIUM SILICATE CLIP UNIT

BACKER ROD AND SEALANT

REQUIRED SHIM TO SEPARATE ALUMINUM CHANNEL FROM Z-CHANNEL, MAX. SHIMS 3/4" THICK

FLASHING MEMBRANE ADHERED TO SUBSTRATE

COMPRESSIBLE BACKER ROD AND SEALANT

UNOBSTRUCTED WEEP SYSTEM @ 24" O/C

PREFINISHED METAL DRIP EDGE

PREMANUFACTURED THERMALLY BROKEN ALUMINUM WINDOW ASSEMBLY

Z-CHANNEL FASTENERS @ 16" O.C. C/W SHIMS AS REQUIRED, MAX. SHIMS 3/4" THICK

WOOD BLOCKING

COMPRESSIBLE BACKER ROD AND SEALANT ALL AROUND THE FRAME

SPRAY APPLIED FOAM INSULATING AIR SEAL ALL AROUND FRAME



ARRISCRAFT
 INTERNATIONAL
 BUILDING STONE • BRICK • LIMESTONE

ARRISCRAFT • CADD

TITLE:

ALUMINUM WINDOW
 HEAD - WINDOW @ KERF

DATE DRAWN:
 01/15/12

SCALE:
 3"=1'-0"

DRAWN BY:
 D.D.N.

DETAIL No:

SS 12RU

AC032