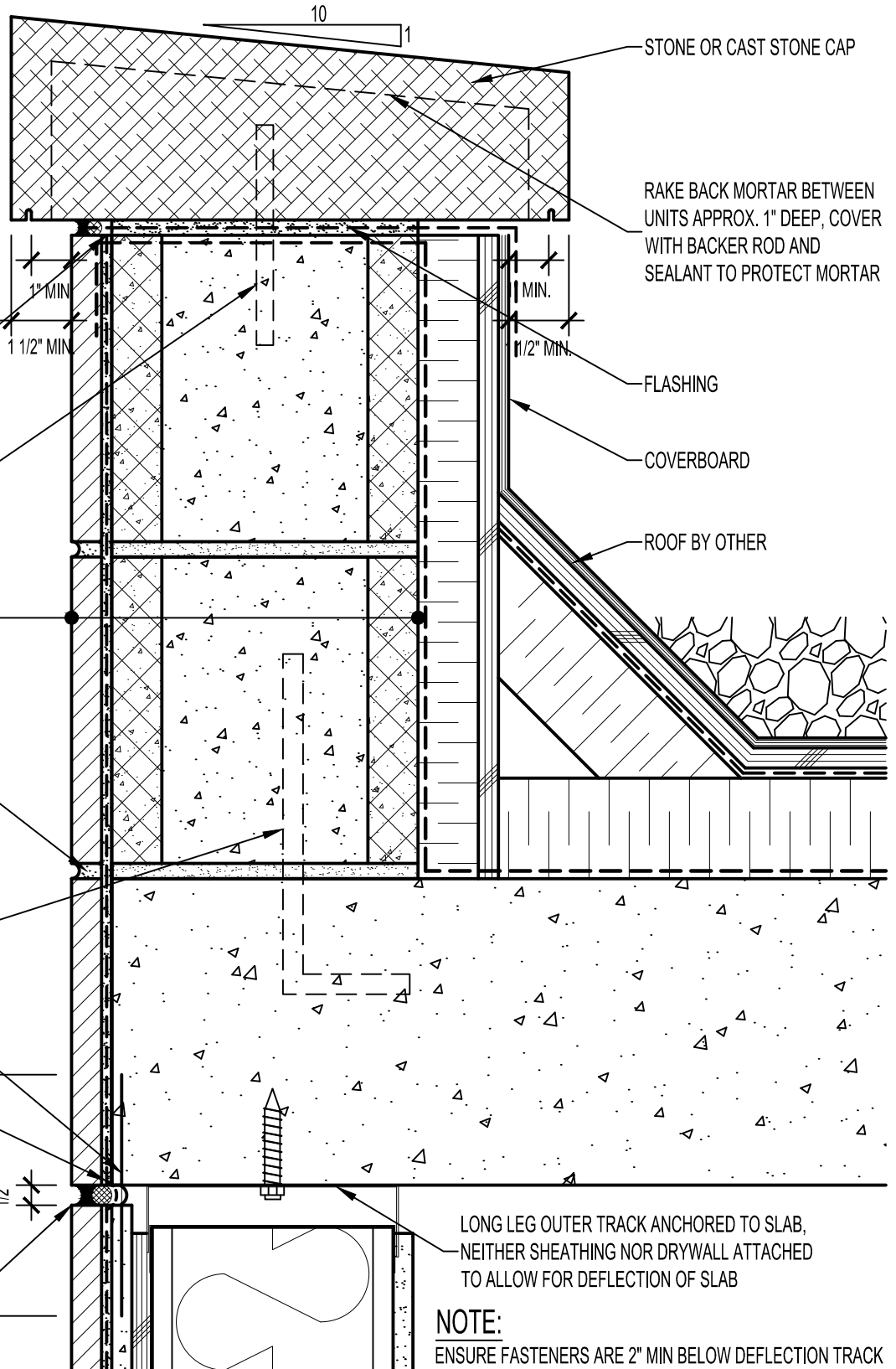


**ARCHITECT NOTE:**

1/2" MINIMUM DEFLECTION SPACE AT EACH FLOOR ACCOMMODATES 1/4" DISPLACEMENT. WIDER MOVEMENT JOINTS MAY BE REQUIRED BASED UPON ANTICIPATED MOVEMENTS OF STRUCTURAL ELEMENTS AND THE SEALANT PROPERTIES.



SEALANT AND BACKER ROD

MECHANICAL ANCHOR

CALCIUM SILICATE TILE UNIT,  
HI-BOND MASONRY VENEER  
MORTAR - POLYMER FORTIFIED,  
LATICRETE AIR & WATER BARRIER,  
CONCRETE MASONRY UNIT (CMU)

POINTING MORTAR

VERTICAL REINFORCING  
IF REQUIRED

WATERPROOFING FABRIC LEFT  
LOOSE FOR ACCOMMODATION OF  
SLAB EDGE MOVEMENT  
COAT WATERPROOFING FABRIC WITH  
AIR / WATER BARRIER

MOVEMENT JOINT REFERENCE  
NOTE IN TOP LEFT CORNER

MOVEMENT JOINT SEALED  
WITH SILICONE SEALANT  
AND BACKER ROD

STONE OR CAST STONE CAP

RAKE BACK MORTAR BETWEEN  
UNITS APPROX. 1" DEEP, COVER  
WITH BACKER ROD AND  
SEALANT TO PROTECT MORTAR

FLASHING

COVERBOARD

ROOF BY OTHER

**NOTE:**  
ENSURE FASTENERS ARE 2" MIN BELOW DEFLECTION TRACK

**Arriscraft**  
Building Stone · Brick · Limestone

**ARRISCRAFT-CADD**

DETAIL No:  
SS08SAT

TITLE:  
PARAPET TO WALL WITH  
STONE OR CAST STONE CAP

**U122**

DATE DRAWN: 03/02/15  
SCALE: 3"=1'-0"  
DRAWN BY: TRI