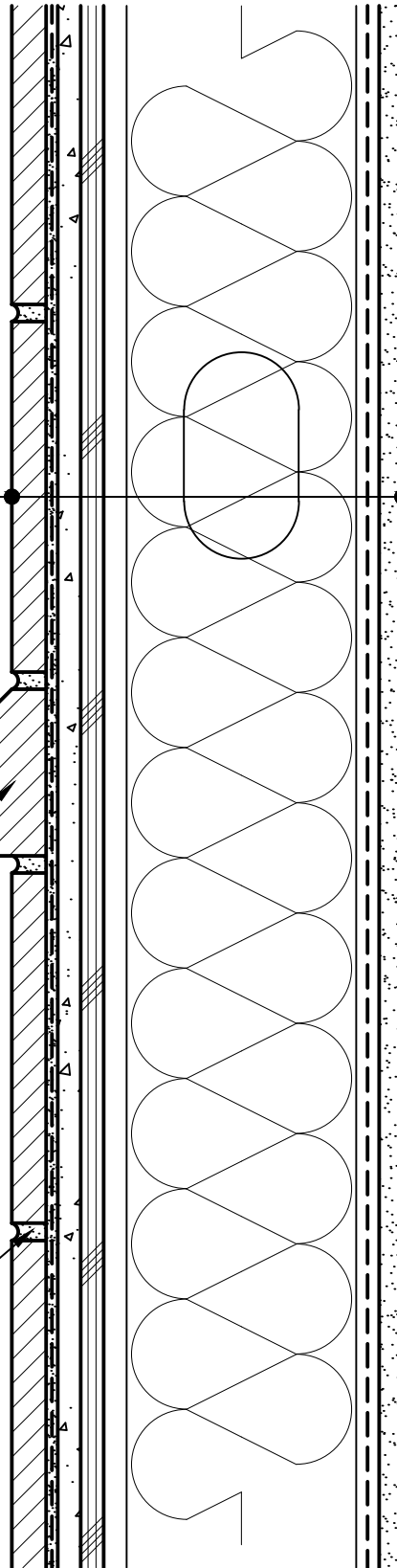


CALCIUM SILICATE TILE UNIT,  
 HI-BOND MASONRY VENEER MORTAR -  
 POLYMER FORTIFIED,  
 LATICRETE AIR & WATER BARRIER,  
 CEMENT BOARD,  
 EXTERIOR SHEATHING,  
 STEEL STUD WALL,  
 BATT INSULATION (THICKNESS  
 DEPENDENT ON REQUIRED R-VALUE),  
 VAPOR BARRIER (LOCATION  
 DEPENDENT ON CLIMATE ZONE),  
 GYPSUM WALLBOARD

SLOPED WATERTABLE CALCIUM  
 SILICATE TILE UNIT

POINTING MORTAR



**Arriscraft**  
 Building Stone · Brick · Limestone

**ARRISCRAFT-CADD**

DETAIL No:

SS08SAT

TITLE:

SLOPED WATERTABLE

**U101**

DATE DRAWN:  
 03/02/15

SCALE:  
 3"=1'-0"

DRAWN BY:  
 TRI