

NOTE: REFER TO
 WINDOW SILL: SS08SATU020
 WINDOW HEAD: SS08SATU030

ATTACH SHEATHING WITH
 APPROVED SCREWS
 (TYPICAL @ EVERY STUD)

ATTACH CEMENT BOARD
 WITH APPROVED SCREWS
 (TYPICAL @ EVERY STUD)

WOOD BLOCKING

COMPRESSIBLE BACKER
 ROD AND SEALANT

PREFINISHED ALUMINUM
 SILL c/w END DAMS

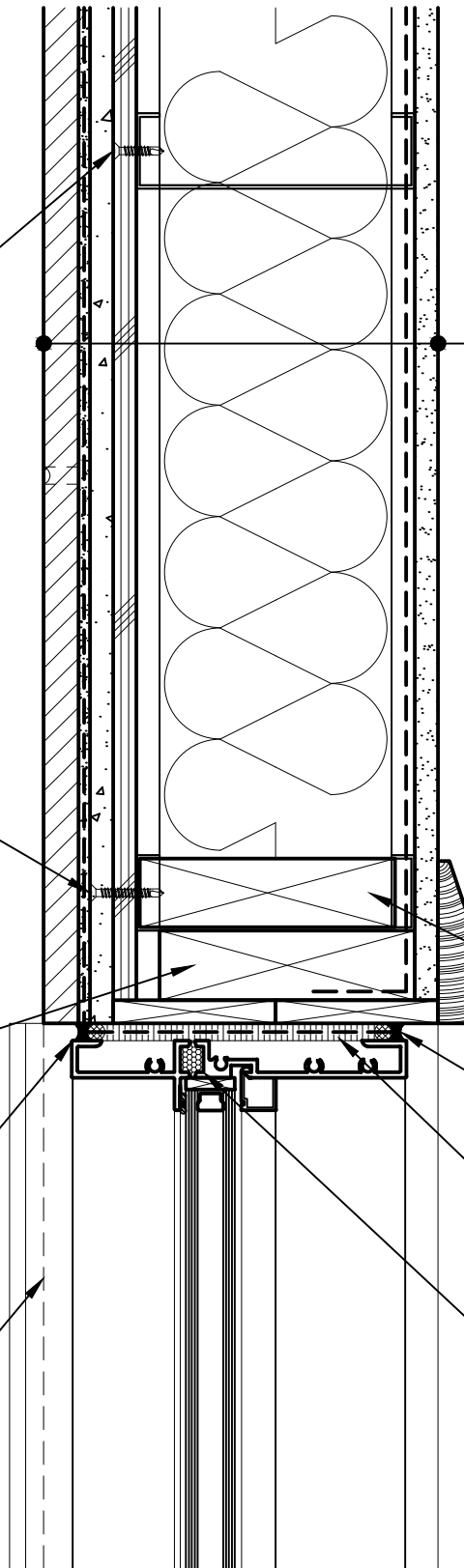
GYPSUM WALLBOARD,
 VAPOR BARRIER (LOCATION DEPENDENT
 ON CLIMATE ZONE),
 STEEL STUD WALL,
 BATT INSULATION (THICKNESS
 DEPENDENT ON REQUIRED R-VALUE),
 EXTERIOR SHEATHING,
 CEMENT BOARD,
 LATICRETE AIR & WATER BARRIER,
 HI-BOND MASONRY VENEER MORTAR -
 POLYMER FORTIFIED,
 CALCIUM SILICATE TILE UNIT

WOOD BLOCKING

COMPRESSIBLE BACKER ROD AND
 SEALANT ALL AROUND FRAME

SPRAY APPLIED FOAM INSULATING
 AIR SEAL ALL AROUND FRAME

PREMANUFACTURED THERMALLY
 BROKEN ALUMINUM WINDOW ASSEMBLY



Arriscraft
 Building Stone · Brick · Limestone

ARRISCRAFT-CADD

DETAIL No:

SS08SAT

TITLE:

WINDOW JAMB WITH
 ALUMINUM SILL (PLAN VIEW)

U040

DATE DRAWN:
 03/02/15

SCALE:
 3"=1'-0"

DRAWN BY:
 TRI