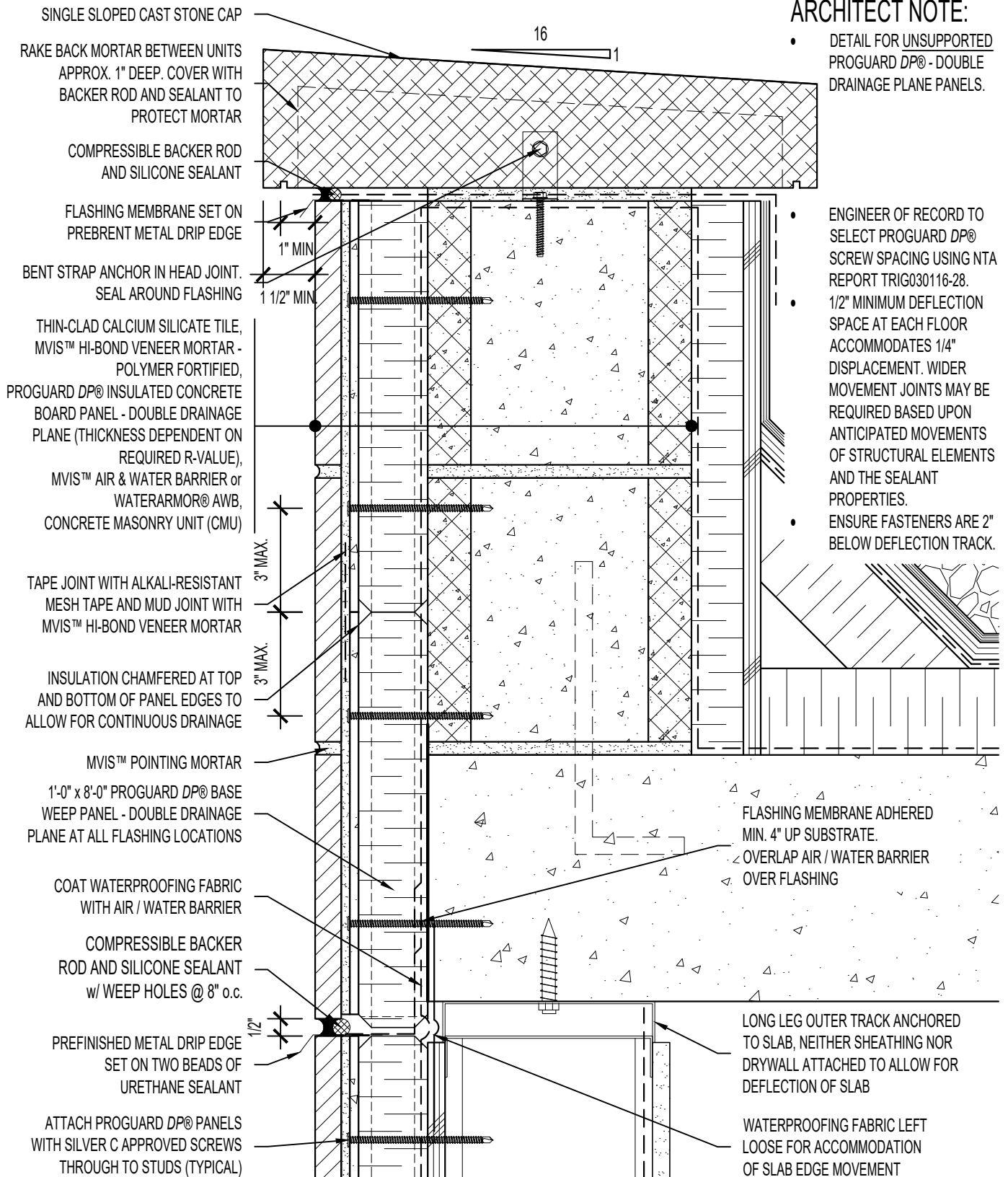


ARCHITECT NOTE:

- DETAIL FOR UNSUPPORTED PROGUARD DP® - DOUBLE DRAINAGE PLANE PANELS.

- ENGINEER OF RECORD TO SELECT PROGUARD DP® SCREW SPACING USING NTA REPORT TRIG030116-28.
- 1/2" MINIMUM DEFLECTION SPACE AT EACH FLOOR ACCOMMODATES 1/4" DISPLACEMENT. WIDER MOVEMENT JOINTS MAY BE REQUIRED BASED UPON ANTICIPATED MOVEMENTS OF STRUCTURAL ELEMENTS AND THE SEALANT PROPERTIES.
- ENSURE FASTENERS ARE 2" BELOW DEFLECTION TRACK.



ARRISCRAFT-CADD

DETAIL No:
SS08SAT - DP2U

TITLE:
PARAPET TO WALL WITH
STONE OR CAST STONE CAP

U122

DATE DRAWN:
16 Jan 2021

SCALE:
3"=1'-0"

DRAWN BY:
TRI