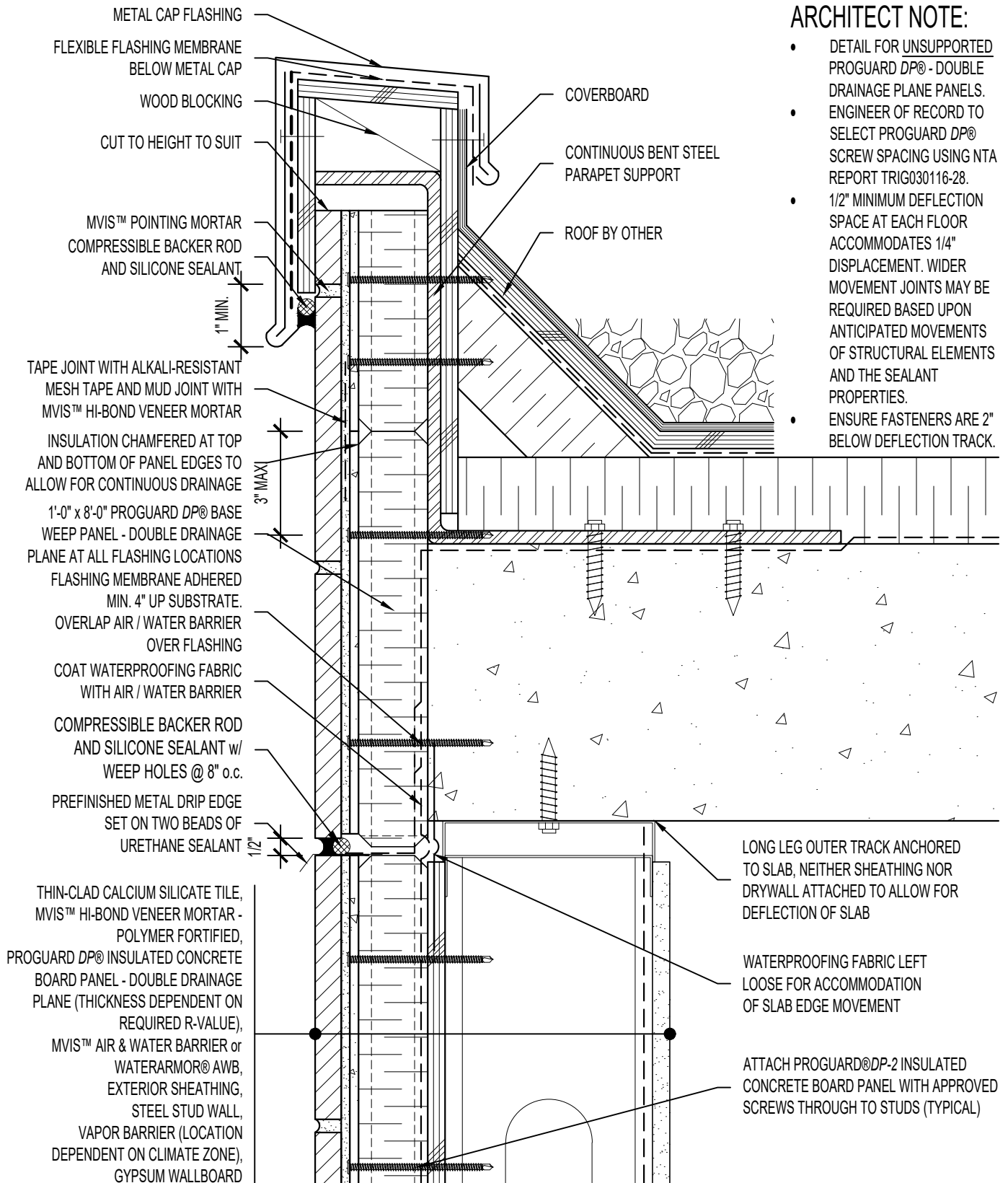


### ARCHITECT NOTE:

- DETAIL FOR UNSUPPORTED PROGUARD DP® - DOUBLE DRAINAGE PLANE PANELS.
- ENGINEER OF RECORD TO SELECT PROGUARD DP® SCREW SPACING USING NTA REPORT TRIG030116-28.
- 1/2" MINIMUM DEFLECTION SPACE AT EACH FLOOR ACCOMMODATES 1/4" DISPLACEMENT. WIDER MOVEMENT JOINTS MAY BE REQUIRED BASED UPON ANTICIPATED MOVEMENTS OF STRUCTURAL ELEMENTS AND THE SEALANT PROPERTIES.
- ENSURE FASTENERS ARE 2" BELOW DEFLECTION TRACK.



LONG LEG OUTER TRACK ANCHORED TO SLAB, NEITHER SHEATHING NOR DRYWALL ATTACHED TO ALLOW FOR DEFLECTION OF SLAB

WATERPROOFING FABRIC LEFT LOOSE FOR ACCOMMODATION OF SLAB EDGE MOVEMENT

ATTACH PROGUARD@DP-2 INSULATED CONCRETE BOARD PANEL WITH APPROVED SCREWS THROUGH TO STUDS (TYPICAL)



**ARRISCRAFT-CADD**

DETAIL No:  
SS08SAT - DP2U

TITLE:  
**LOW PARAPET TO WALL WITH  
METAL CAP FLASHING**

**U120**

DATE DRAWN: 16 Jan 2021    SCALE: 3"=1'-0"    DRAWN BY: TRI