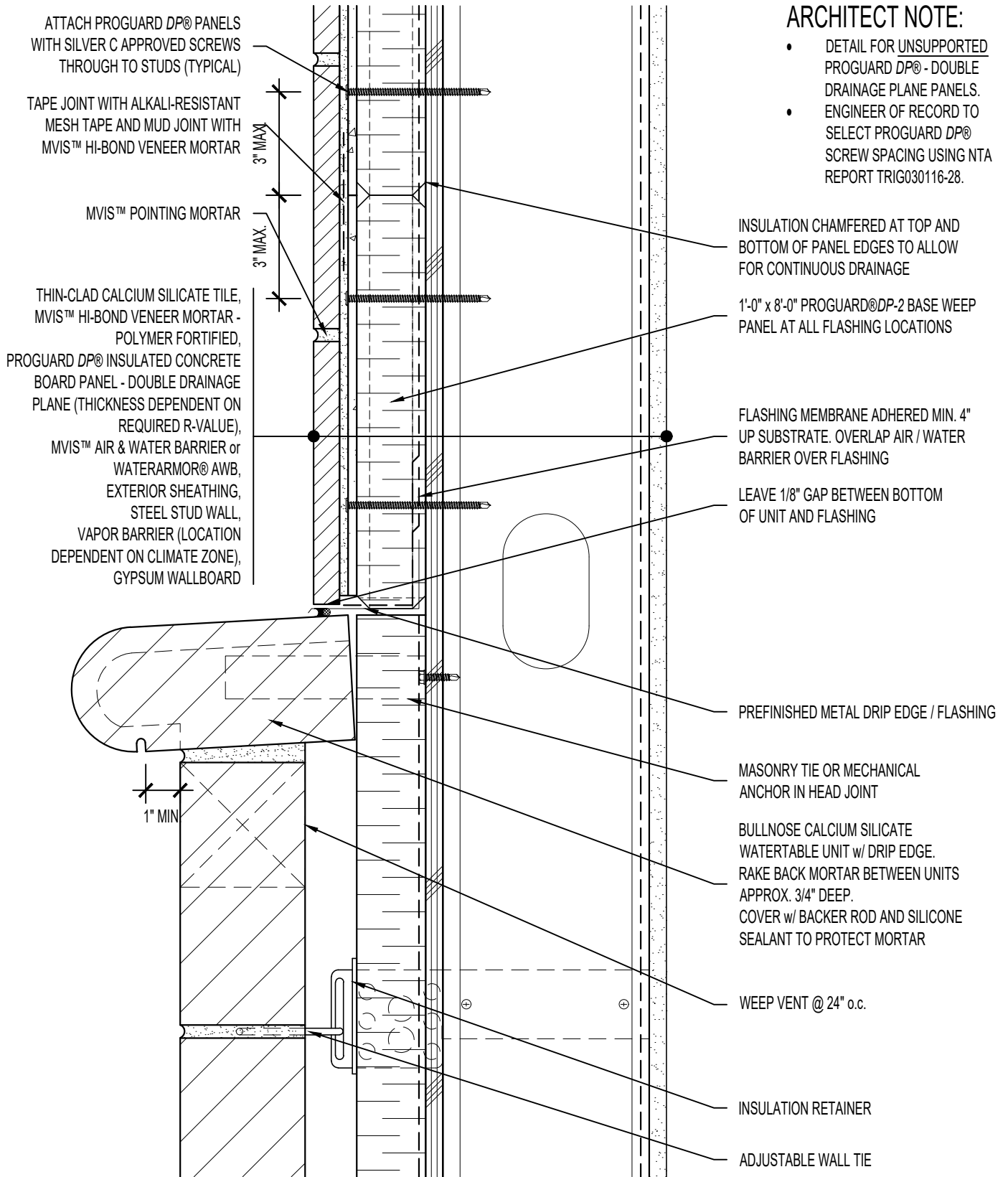


ARCHITECT NOTE:

- DETAIL FOR UNSUPPORTED PROGUARD DP® - DOUBLE DRAINAGE PLANE PANELS.
- ENGINEER OF RECORD TO SELECT PROGUARD DP® SCREW SPACING USING NTA REPORT TRIG030116-28.



ATTACH PROGUARD DP® PANELS WITH SILVER C APPROVED SCREWS THROUGH TO STUDS (TYPICAL)

TAPE JOINT WITH ALKALI-RESISTANT MESH TAPE AND MUD JOINT WITH MVIS™ HI-BOND VENEER MORTAR

MVIS™ POINTING MORTAR

THIN-CLAD CALCIUM SILICATE TILE, MVIS™ HI-BOND VENEER MORTAR - POLYMER FORTIFIED, PROGUARD DP® INSULATED CONCRETE BOARD PANEL - DOUBLE DRAINAGE PLANE (THICKNESS DEPENDENT ON REQUIRED R-VALUE), MVIS™ AIR & WATER BARRIER or WATERARMOR® AWB, EXTERIOR SHEATHING, STEEL STUD WALL, VAPOR BARRIER (LOCATION DEPENDENT ON CLIMATE ZONE), GYPSUM WALLBOARD

INSULATION CHAMFERED AT TOP AND BOTTOM OF PANEL EDGES TO ALLOW FOR CONTINUOUS DRAINAGE

1'-0" x 8'-0" PROGUARD®DP-2 BASE WEEP PANEL AT ALL FLASHING LOCATIONS

FLASHING MEMBRANE ADHERED MIN. 4" UP SUBSTRATE. OVERLAP AIR / WATER BARRIER OVER FLASHING

LEAVE 1/8" GAP BETWEEN BOTTOM OF UNIT AND FLASHING

PREFINISHED METAL DRIP EDGE / FLASHING

MASONRY TIE OR MECHANICAL ANCHOR IN HEAD JOINT

BULLNOSE CALCIUM SILICATE WATERTABLE UNIT w/ DRIP EDGE. RAKE BACK MORTAR BETWEEN UNITS APPROX. 3/4" DEEP. COVER w/ BACKER ROD AND SILICONE SEALANT TO PROTECT MORTAR

WEEP VENT @ 24" o.c.

INSULATION RETAINER

ADJUSTABLE WALL TIE



ARRISCRAFT-CADD

TITLE: FULL-BED / THIN ADHERED CALCIUM SILICATE TRANSITION (BULLNOSE WATERTABLE)

DETAIL No: SS08SAT - DP2U

U108

DATE DRAWN: 16 Jan 2021
 SCALE: 3"=1'-0"
 DRAWN BY: TRI