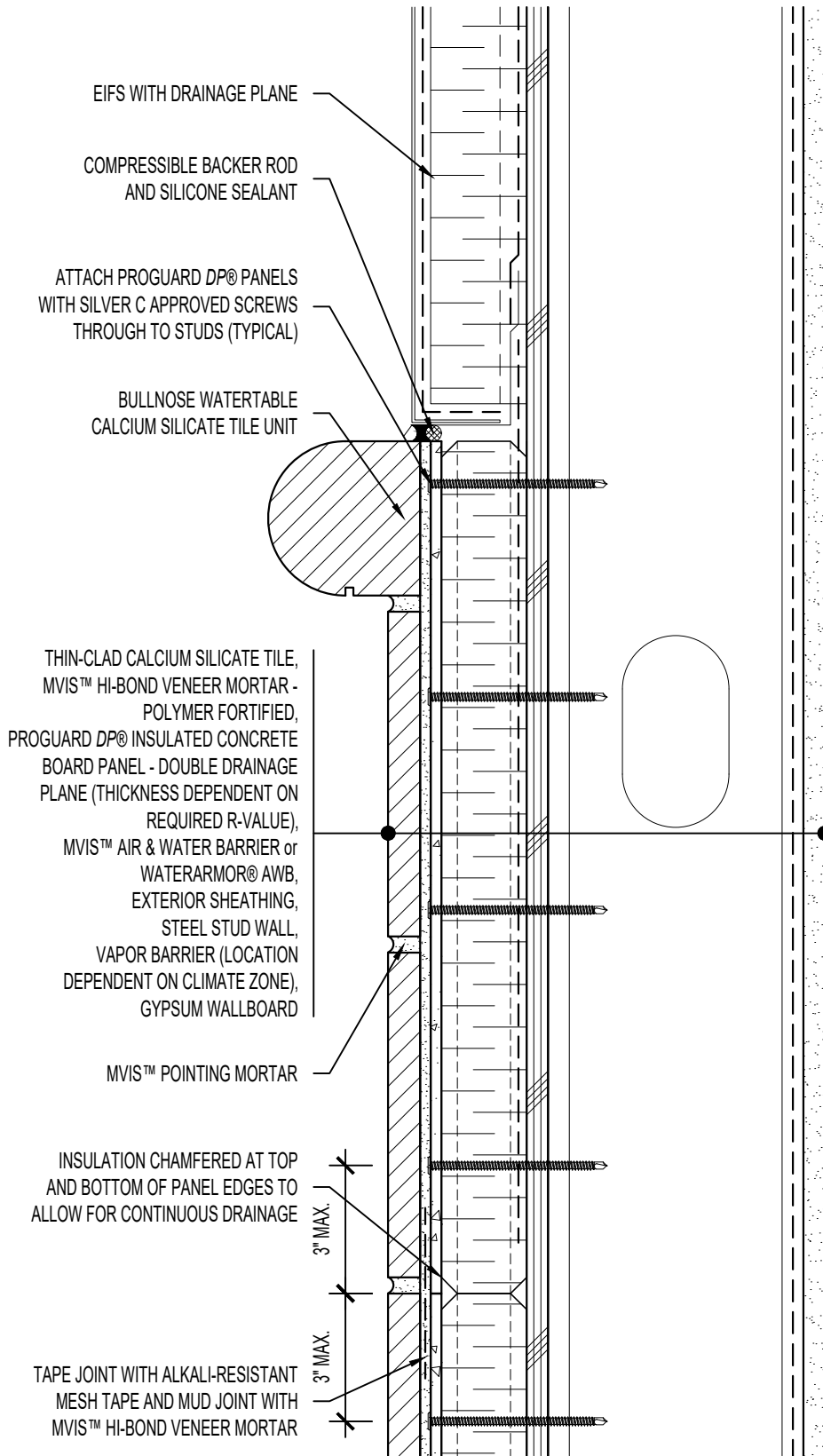


ARCHITECT NOTE:

- DETAIL FOR UNSUPPORTED PROGUARD DP® - DOUBLE DRAINAGE PLANE PANELS.
- ENGINEER OF RECORD TO SELECT PROGUARD DP® SCREW SPACING USING NTA REPORT TRIG030116-28.



ARRISCRAFT-CADD

DETAIL No:
SS08SAT - DP2U

TITLE:
EIFS / CALCIUM SILICATE TILE
TRANSITION (BULLNOSE)

U104

DATE DRAWN:
16 Jan 2021

SCALE:
3"=1'-0"

DRAWN BY:
TRI