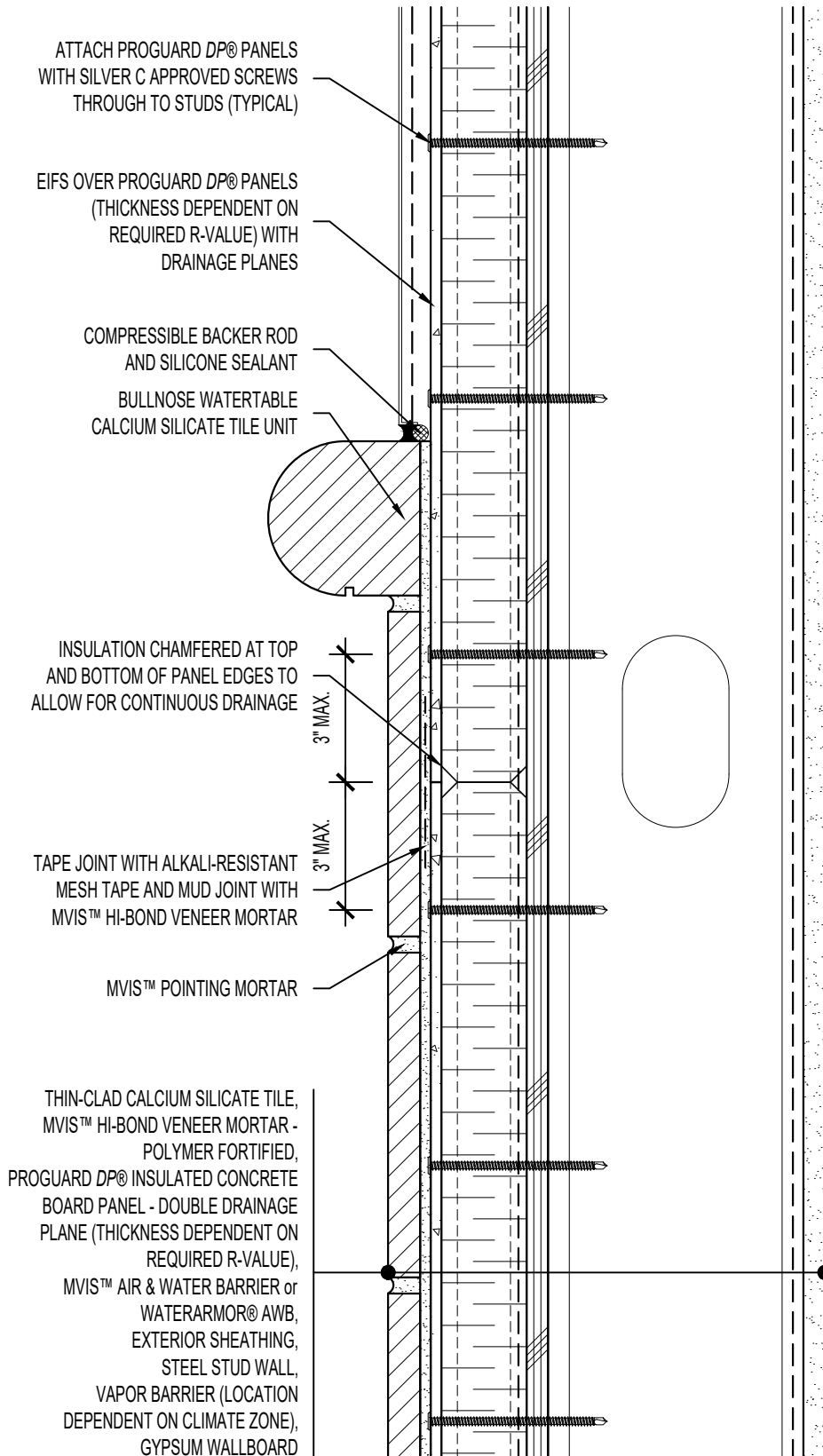


ARCHITECT NOTE:

- DETAIL FOR UNSUPPORTED PROGUARD DP® - DOUBLE DRAINAGE PLANE PANELS.
- ENGINEER OF RECORD TO SELECT PROGUARD DP® SCREW SPACING USING NTA REPORT TRIG030116-28.



ATTACH PROGUARD DP® PANELS WITH SILVER C APPROVED SCREWS THROUGH TO STUDS (TYPICAL)

EIFS OVER PROGUARD DP® PANELS (THICKNESS DEPENDENT ON REQUIRED R-VALUE) WITH DRAINAGE PLANES

COMPRESSIBLE BACKER ROD AND SILICONE SEALANT

BULLNOSE WATERTABLE CALCIUM SILICATE TILE UNIT

INSULATION CHAMFERED AT TOP AND BOTTOM OF PANEL EDGES TO ALLOW FOR CONTINUOUS DRAINAGE

3" MAX.

TAPE JOINT WITH ALKALI-RESISTANT MESH TAPE AND MUD JOINT WITH MVIS™ HI-BOND VENEER MORTAR

3" MAX.

MVIS™ POINTING MORTAR

THIN-CLAD CALCIUM SILICATE TILE, MVIS™ HI-BOND VENEER MORTAR - POLYMER FORTIFIED, PROGUARD DP® INSULATED CONCRETE BOARD PANEL - DOUBLE DRAINAGE PLANE (THICKNESS DEPENDENT ON REQUIRED R-VALUE),

MVIS™ AIR & WATER BARRIER or WATERARMOR® AWB, EXTERIOR SHEATHING, STEEL STUD WALL, VAPOR BARRIER (LOCATION DEPENDENT ON CLIMATE ZONE), GYPSUM WALLBOARD



ARRISCRAFT-CADD

TITLE: EIFS / CALCIUM SILICATE TILE TRANSITION (BULLNOSE) - CONTINUOUS PROGUARD DP®

DETAIL No:
SS08SAT - DP2U

U102

DATE DRAWN:
16 Jan 2021

SCALE:
3"=1'-0"

DRAWN BY:
TRI