

THIN-CLAD CALCIUM SILICATE TILE,  
 MVIS™ HI-BOND VENEER MORTAR -  
 POLYMER FORTIFIED,  
 PROGUARD DP® INSULATED CONCRETE  
 BOARD PANEL - DOUBLE DRAINAGE  
 PLANE (THICKNESS DEPENDENT ON  
 REQUIRED R-VALUE),  
 MVIS™ AIR & WATER BARRIER or  
 WATERARMOR® AWB,  
 EXTERIOR SHEATHING,  
 STEEL STUD WALL,  
 VAPOR BARRIER (LOCATION  
 DEPENDENT ON CLIMATE ZONE),  
 GYPSUM WALLBOARD

TAPE JOINT WITH ALKALI-RESISTANT  
 MESH TAPE AND MUD JOINT WITH  
 MVIS™ HI-BOND VENEER MORTAR

INSULATION CHAMFERED AT TOP  
 AND BOTTOM OF PANEL EDGES TO  
 ALLOW FOR CONTINUOUS DRAINAGE

FLASHING MEMBRANE ADHERED MIN. 4"  
 UP SUBSTRATE. OVERLAP AIR / WATER  
 BARRIER OVER FLASHING

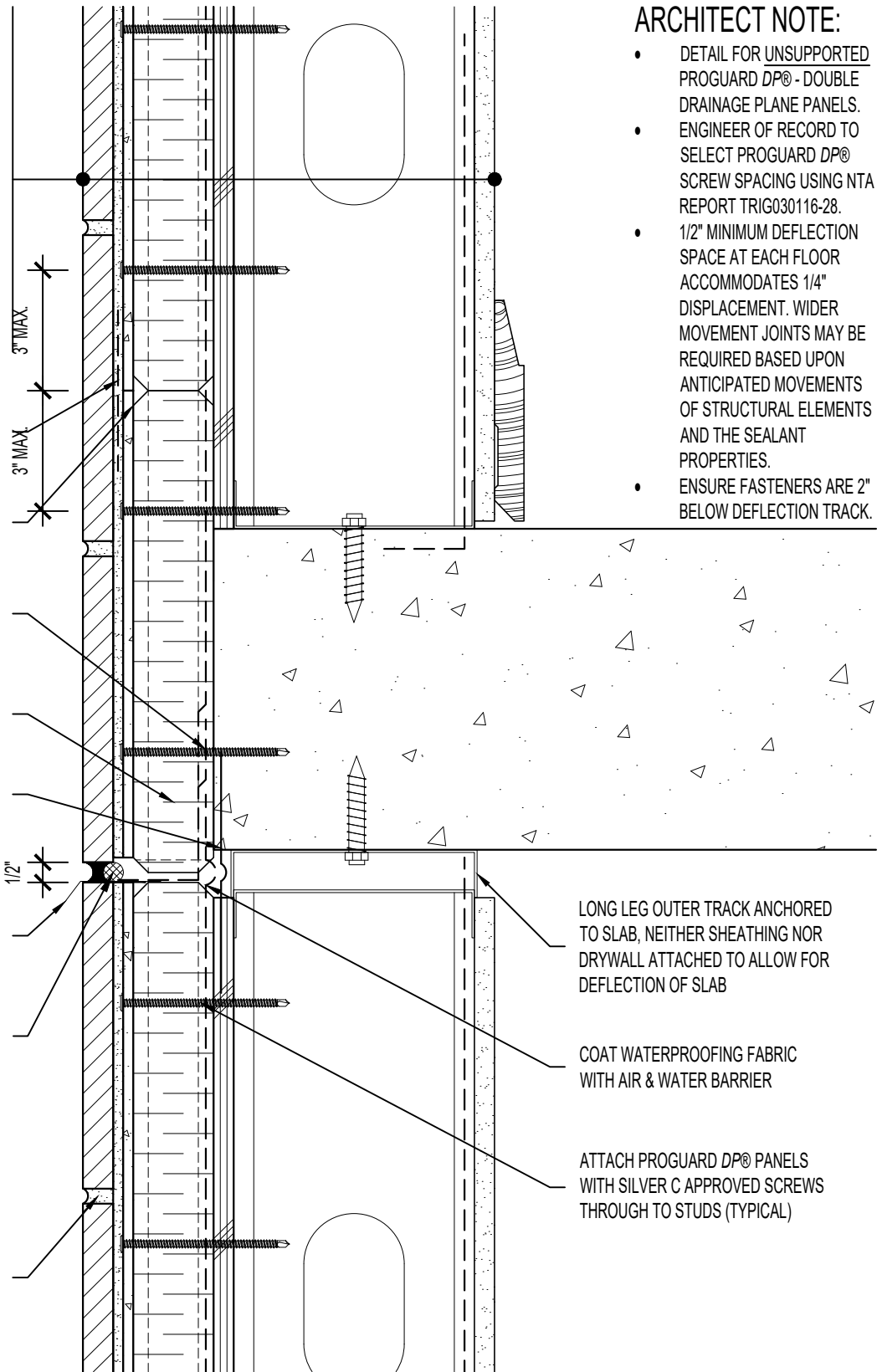
1'-0" x 8'-0" PROGUARD DP® BASE WEEP  
 PANEL AT ALL FLASHING LOCATIONS

WATERPROOFING FABRIC LEFT  
 LOOSE FOR ACCOMMODATION  
 OF SLAB EDGE MOVEMENT

PREFINISHED METAL DRIP EDGE  
 SET ON TWO BEADS OF  
 URETHANE SEALANT

COMPRESSIBLE BACKER ROD  
 AND SILICONE SEALANT w/  
 WEEP HOLES @ 8" o.c.

MVIS™ POINTING MORTAR



**ARCHITECT NOTE:**

- DETAIL FOR UNSUPPORTED PROGUARD DP® - DOUBLE DRAINAGE PLANE PANELS.
- ENGINEER OF RECORD TO SELECT PROGUARD DP® SCREW SPACING USING NTA REPORT TRIG030116-28.
- 1/2" MINIMUM DEFLECTION SPACE AT EACH FLOOR ACCOMMODATES 1/4" DISPLACEMENT. WIDER MOVEMENT JOINTS MAY BE REQUIRED BASED UPON ANTICIPATED MOVEMENTS OF STRUCTURAL ELEMENTS AND THE SEALANT PROPERTIES.
- ENSURE FASTENERS ARE 2" BELOW DEFLECTION TRACK.



**ARRISCRAFT-CADD**

DETAIL No:  
 SS08SAT - DP2U

TITLE:

DEFLECTION SPACE DETAIL

**U081**

DATE DRAWN:

16 Jan 2021

SCALE:

3"=1'-0"

DRAWN BY:

TRI