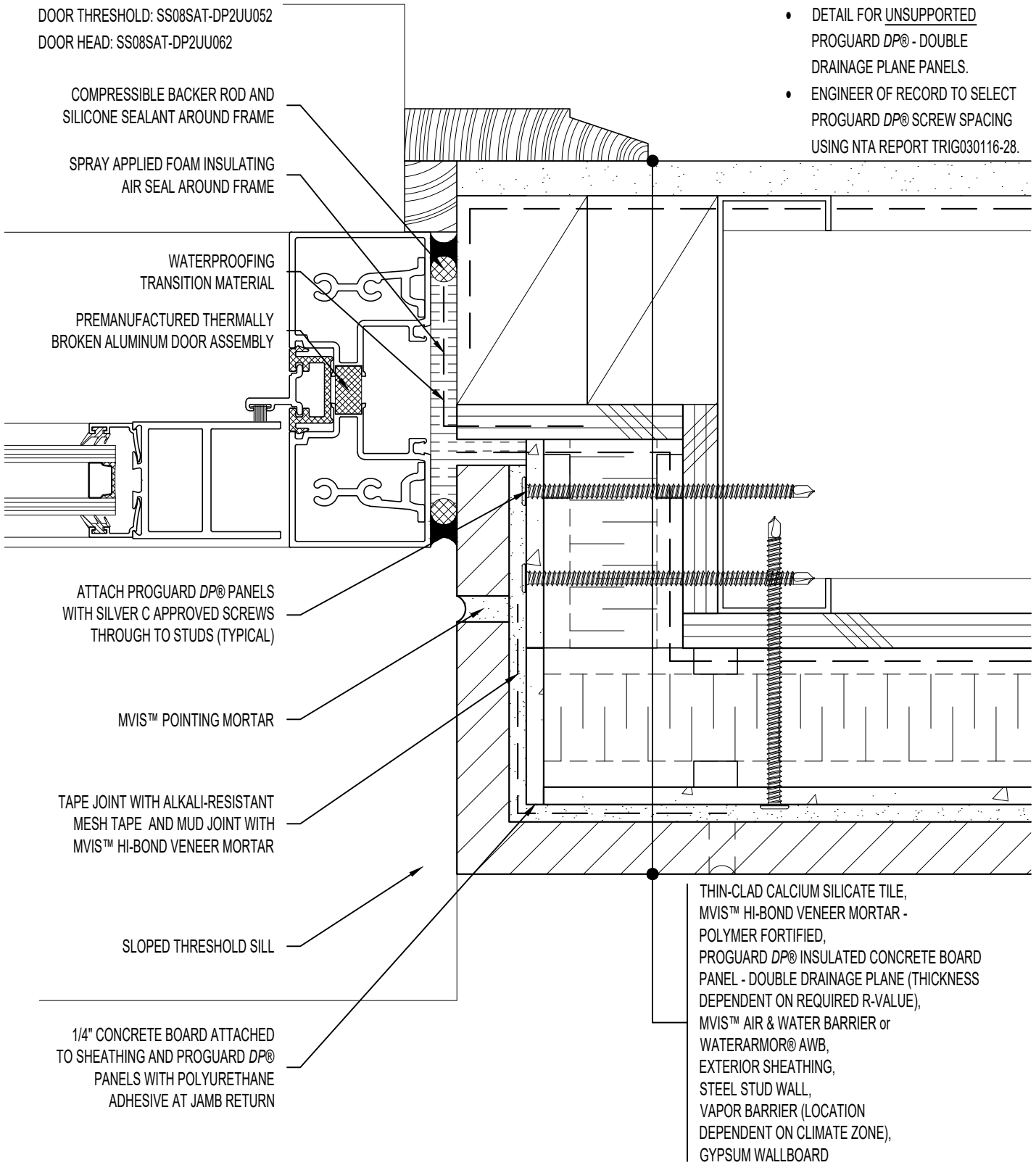


**NOTE:** REFER TO

DOOR THRESHOLD: SS08SAT-DP2UU052  
 DOOR HEAD: SS08SAT-DP2UU062

**ARCHITECT NOTE:**

- DETAIL FOR UNSUPPORTED PROGUARD DP® - DOUBLE DRAINAGE PLANE PANELS.
- ENGINEER OF RECORD TO SELECT PROGUARD DP® SCREW SPACING USING NTA REPORT TRIG030116-28.



COMPRESSIBLE BACKER ROD AND SILICONE SEALANT AROUND FRAME

SPRAY APPLIED FOAM INSULATING AIR SEAL AROUND FRAME

WATERPROOFING TRANSITION MATERIAL

PREMANUFACTURED THERMALLY BROKEN ALUMINUM DOOR ASSEMBLY

ATTACH PROGUARD DP® PANELS WITH SILVER C APPROVED SCREWS THROUGH TO STUDS (TYPICAL)

MVIS™ POINTING MORTAR

TAPE JOINT WITH ALKALI-RESISTANT MESH TAPE AND MUD JOINT WITH MVIS™ HI-BOND VENEER MORTAR

SLOPED THRESHOLD SILL

1/4" CONCRETE BOARD ATTACHED TO SHEATHING AND PROGUARD DP® PANELS WITH POLYURETHANE ADHESIVE AT JAMB RETURN

THIN-CLAD CALCIUM SILICATE TILE, MVIS™ HI-BOND VENEER MORTAR - POLYMER FORTIFIED, PROGUARD DP® INSULATED CONCRETE BOARD PANEL - DOUBLE DRAINAGE PLANE (THICKNESS DEPENDENT ON REQUIRED R-VALUE), MVIS™ AIR & WATER BARRIER or WATERARMOR® AWB, EXTERIOR SHEATHING, STEEL STUD WALL, VAPOR BARRIER (LOCATION DEPENDENT ON CLIMATE ZONE), GYPSUM WALLBOARD



**ARRISCRAFT-CADD**

DETAIL No:  
 SS08SAT - DP2U

TITLE:  
 DOOR JAMB - DEEP RECESSED  
 DOOR (PLAN VIEW)

**U072**

DATE DRAWN: 16 Jan 2021    SCALE: 1-1/2"=1'-0"    DRAWN BY: TRI