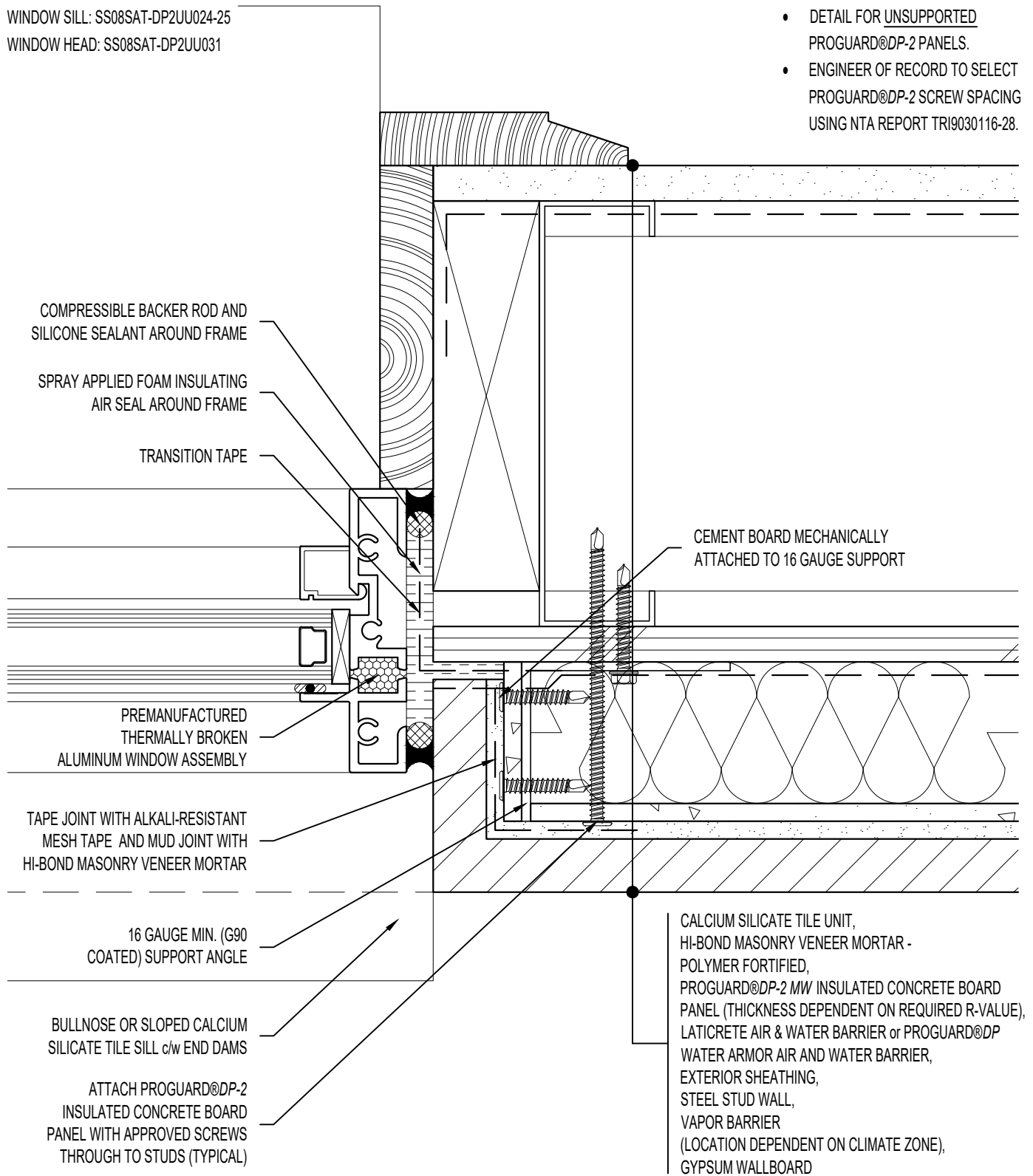


NOTE: REFER TO

WINDOW SILL: SS08SAT-DP2UU024-25
 WINDOW HEAD: SS08SAT-DP2UU031

ARCHITECT NOTE:

- DETAIL FOR UNSUPPORTED PROGUARD®DP-2 PANELS.
- ENGINEER OF RECORD TO SELECT PROGUARD®DP-2 SCREW SPACING USING NTA REPORT TRI9030116-28.



COMPRESSIBLE BACKER ROD AND SILICONE SEALANT AROUND FRAME

SPRAY APPLIED FOAM INSULATING AIR SEAL AROUND FRAME

TRANSITION TAPE

PREMANUFACTURED THERMALLY BROKEN ALUMINUM WINDOW ASSEMBLY

TAPE JOINT WITH ALKALI-RESISTANT MESH TAPE AND MUD JOINT WITH HI-BOND MASONRY VENEER MORTAR

16 GAUGE MIN. (G90 COATED) SUPPORT ANGLE

BULLNOSE OR SLOPED CALCIUM SILICATE TILE SILL c/w END DAMS

ATTACH PROGUARD®DP-2 INSULATED CONCRETE BOARD PANEL WITH APPROVED SCREWS THROUGH TO STUDS (TYPICAL)

CEMENT BOARD MECHANICALLY ATTACHED TO 16 GAUGE SUPPORT

CALCIUM SILICATE TILE UNIT, HI-BOND MASONRY VENEER MORTAR - POLYMER FORTIFIED, PROGUARD®DP-2 MW INSULATED CONCRETE BOARD PANEL (THICKNESS DEPENDENT ON REQUIRED R-VALUE), LATICRETE AIR & WATER BARRIER or PROGUARD®DP WATER ARMOR AIR AND WATER BARRIER, EXTERIOR SHEATHING, STEEL STUD WALL, VAPOR BARRIER (LOCATION DEPENDENT ON CLIMATE ZONE), GYPSUM WALLBOARD



ARRISCRAFT-CADD

TITLE: WINDOW JAMB WITH
 TILE SILL - PROGUARD DP® MW /
 RETURN TILE UNIT (PLAN VIEW)

DETAIL No:
 SS08SAT - DP2U

U045

DATE DRAWN:
 16 Jan 2021

SCALE:
 1-1/2"=1'-0"

DRAWN BY:
 TRI