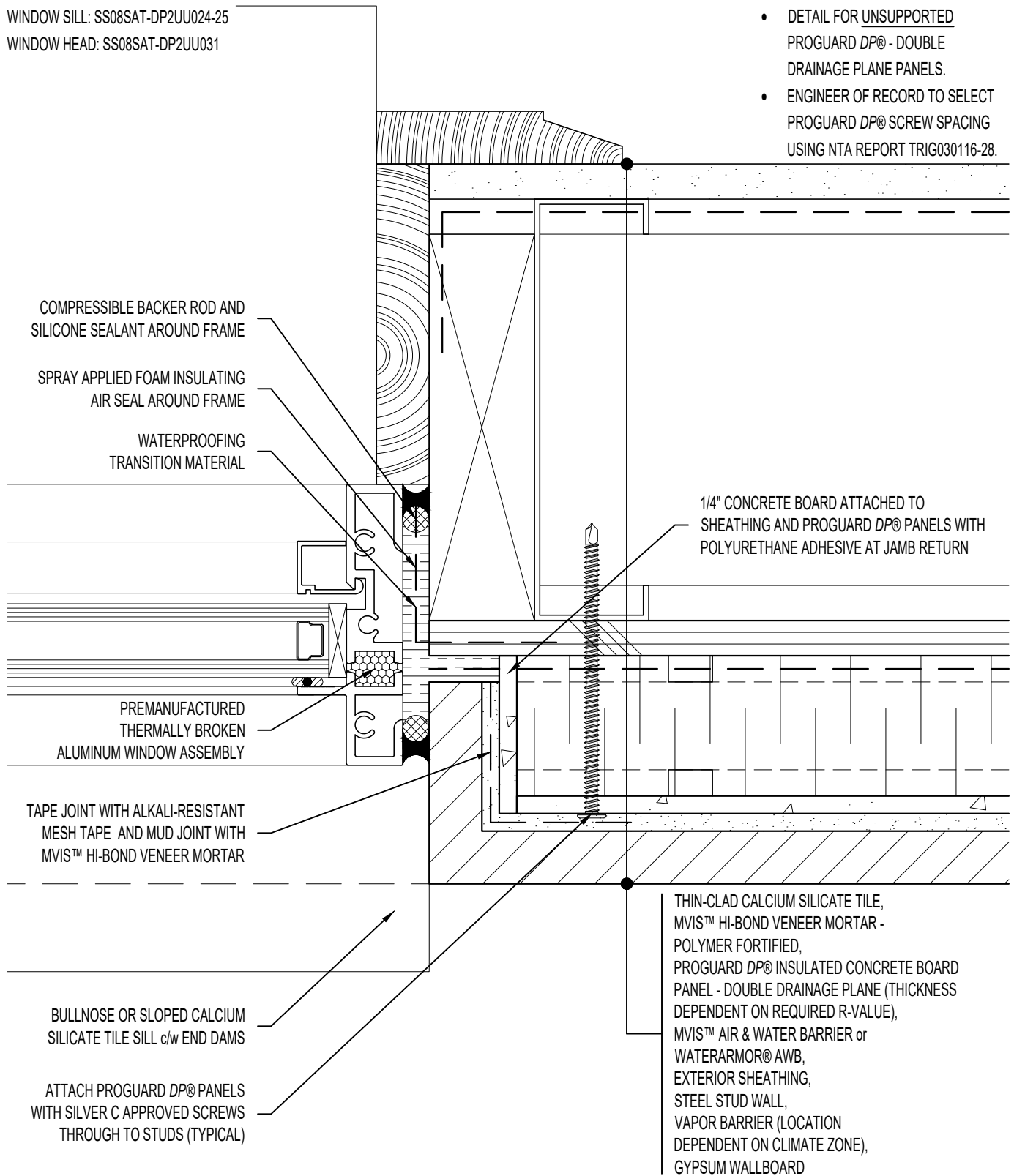


NOTE: REFER TO

WINDOW SILL: SS08SAT-DP2UU024-25
 WINDOW HEAD: SS08SAT-DP2UU031

ARCHITECT NOTE:

- DETAIL FOR UNSUPPORTED PROGUARD DP® - DOUBLE DRAINAGE PLANE PANELS.
- ENGINEER OF RECORD TO SELECT PROGUARD DP® SCREW SPACING USING NTA REPORT TRIG030116-28.



ARRISCRAFT-CADD

DETAIL No:
 SS08SAT - DP2U

TITLE: WINDOW JAMB WITH
 TILE SILL - END RETURN
 TILE UNIT (PLAN VIEW)

U043

| | | |
|----------------------------|------------------------|------------------|
| DATE DRAWN: 16 Jan 2021 | SCALE: 1-1/2"=1'-0" | DRAWN BY: TRI |
|----------------------------|------------------------|------------------|