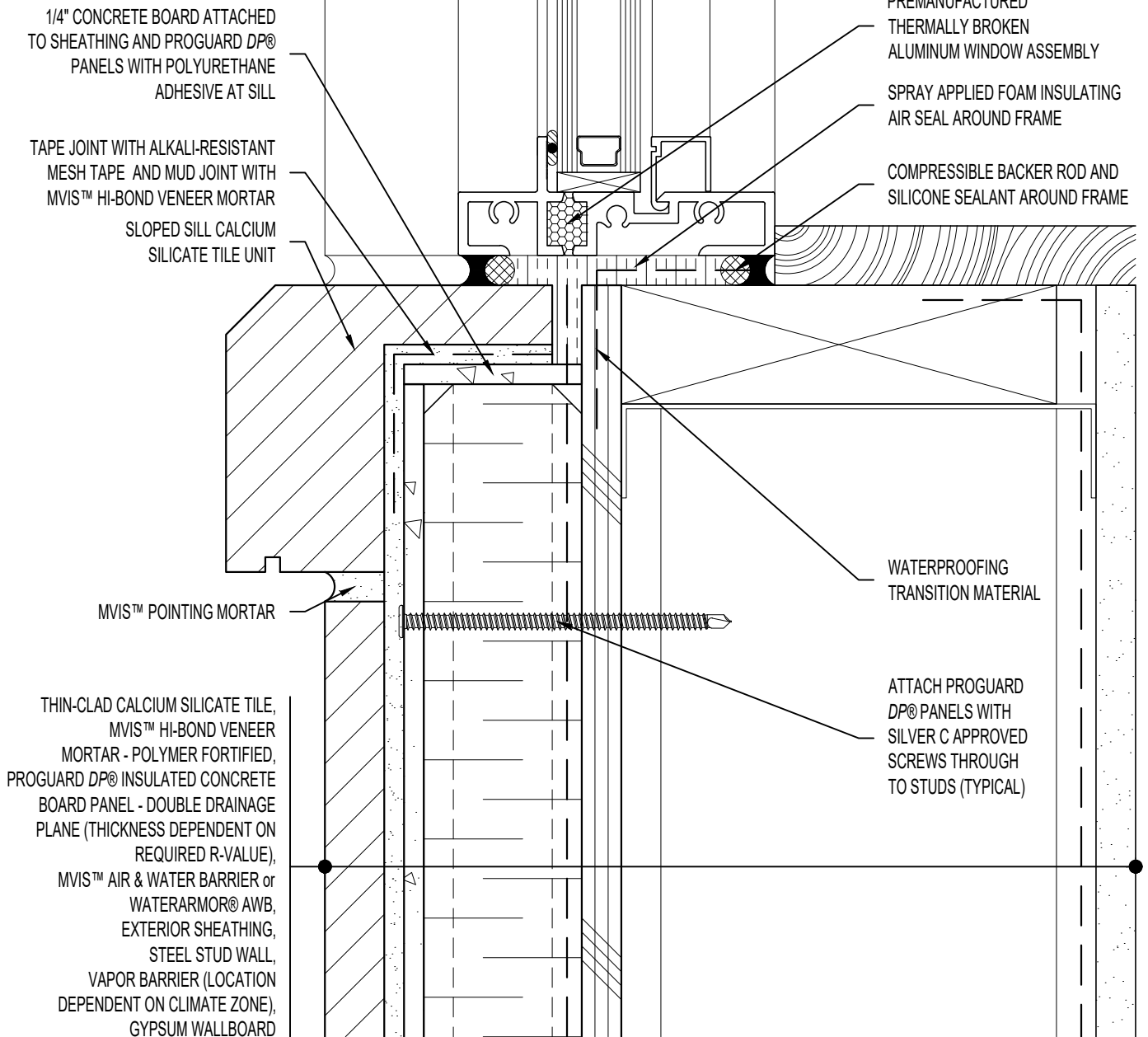


NOTE: REFER TO

WINDOW HEAD: SS08SAT-DP2UU031-32
 WINDOW JAMB: SS08SAT-DP2UU044-45

ARCHITECT NOTE:

- DETAIL FOR UNSUPPORTED PROGUARD DP® - DOUBLE DRAINAGE PLANE PANELS.
- ENGINEER OF RECORD TO SELECT PROGUARD DP® SCREW SPACING USING NTA REPORT TRIG030116-28.



1/4" CONCRETE BOARD ATTACHED TO SHEATHING AND PROGUARD DP® PANELS WITH POLYURETHANE ADHESIVE AT SILL

TAPE JOINT WITH ALKALI-RESISTANT MESH TAPE AND MUD JOINT WITH MVIS™ HI-BOND VENEER MORTAR
 SLOPED SILL CALCIUM SILICATE TILE UNIT

PREMANUFACTURED THERMALLY BROKEN ALUMINUM WINDOW ASSEMBLY
 SPRAY APPLIED FOAM INSULATING AIR SEAL AROUND FRAME
 COMPRESSIBLE BACKER ROD AND SILICONE SEALANT AROUND FRAME

MVIS™ POINTING MORTAR

WATERPROOFING TRANSITION MATERIAL

THIN-CLAD CALCIUM SILICATE TILE, MVIS™ HI-BOND VENEER MORTAR - POLYMER FORTIFIED, PROGUARD DP® INSULATED CONCRETE BOARD PANEL - DOUBLE DRAINAGE PLANE (THICKNESS DEPENDENT ON REQUIRED R-VALUE), MVIS™ AIR & WATER BARRIER or WATERARMOR® AWB, EXTERIOR SHEATHING, STEEL STUD WALL, VAPOR BARRIER (LOCATION DEPENDENT ON CLIMATE ZONE), GYPSUM WALLBOARD

ATTACH PROGUARD DP® PANELS WITH SILVER C APPROVED SCREWS THROUGH TO STUDS (TYPICAL)



ARRISCRAFT-CADD

DETAIL No:
 SS08SAT - DP2U

TITLE:
 SLOPED WINDOW SILL -
 RECESSED WINDOW

U025

DATE DRAWN: 16 Jan 2021
 SCALE: 1-1/2"=1'-0"
 DRAWN BY: TRI