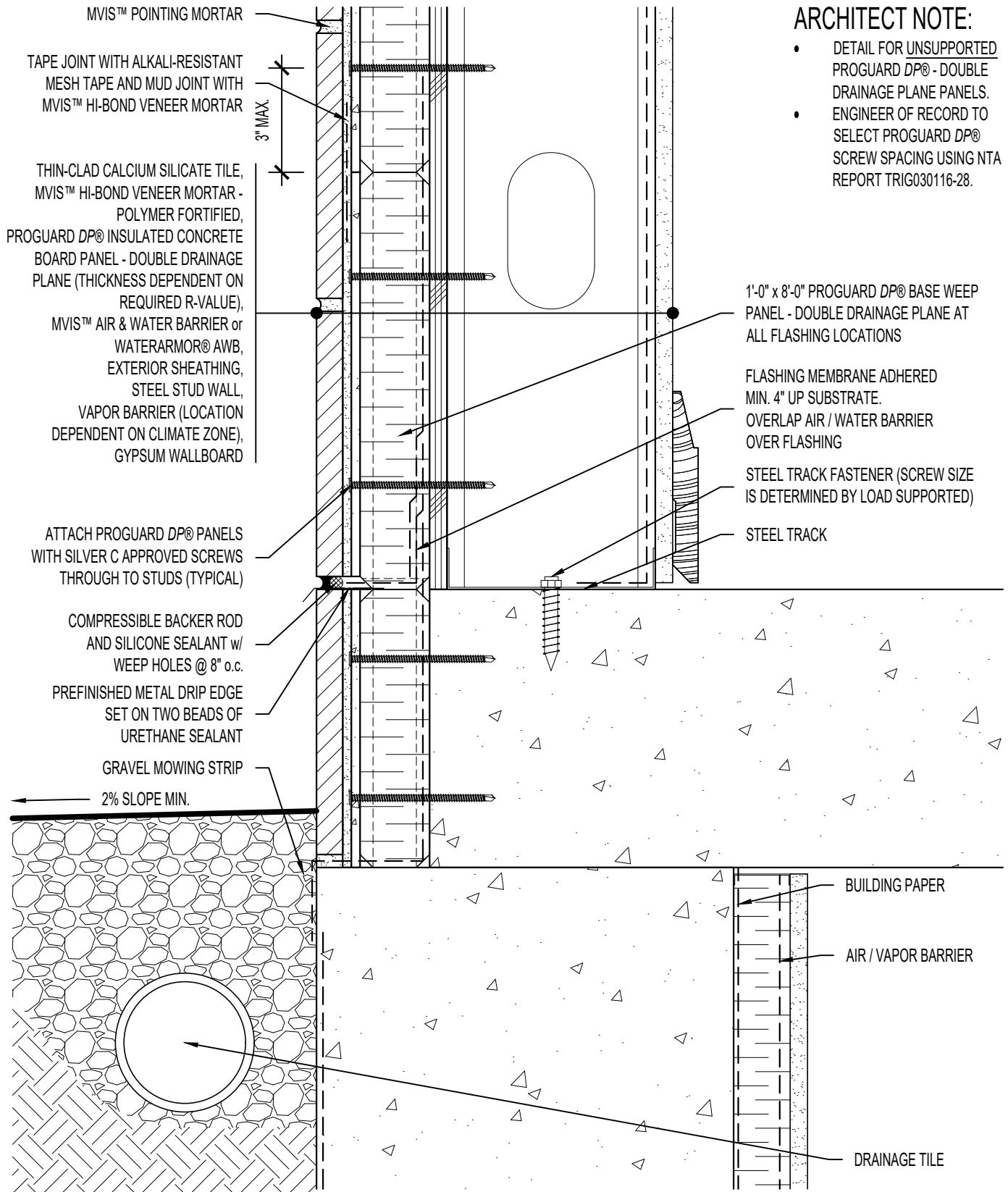


ARCHITECT NOTE:

- DETAIL FOR UNSUPPORTED PROGUARD DP® - DOUBLE DRAINAGE PLANE PANELS.
- ENGINEER OF RECORD TO SELECT PROGUARD DP® SCREW SPACING USING NTA REPORT TRIG030116-28.



MVIS™ POINTING MORTAR

TAPE JOINT WITH ALKALI-RESISTANT MESH TAPE AND MUD JOINT WITH MVIS™ HI-BOND VENEER MORTAR

3" MAX.

THIN-CLAD CALCIUM SILICATE TILE, MVIS™ HI-BOND VENEER MORTAR - POLYMER FORTIFIED, PROGUARD DP® INSULATED CONCRETE BOARD PANEL - DOUBLE DRAINAGE PLANE (THICKNESS DEPENDENT ON REQUIRED R-VALUE), MVIS™ AIR & WATER BARRIER or WATERARMOR® AWB, EXTERIOR SHEATHING, STEEL STUD WALL, VAPOR BARRIER (LOCATION DEPENDENT ON CLIMATE ZONE), GYPSUM WALLBOARD

ATTACH PROGUARD DP® PANELS WITH SILVER C APPROVED SCREWS THROUGH TO STUDS (TYPICAL)

COMPRESSIBLE BACKER ROD AND SILICONE SEALANT w/ WEEP HOLES @ 8" o.c. PREFINISHED METAL DRIP EDGE SET ON TWO BEADS OF URETHANE SEALANT

GRAVEL MOWING STRIP

2% SLOPE MIN.

1'-0" x 8'-0" PROGUARD DP® BASE WEEP PANEL - DOUBLE DRAINAGE PLANE AT ALL FLASHING LOCATIONS

FLASHING MEMBRANE ADHERED MIN. 4" UP SUBSTRATE. OVERLAP AIR / WATER BARRIER OVER FLASHING

STEEL TRACK FASTENER (SCREW SIZE IS DETERMINED BY LOAD SUPPORTED)

STEEL TRACK

BUILDING PAPER

AIR / VAPOR BARRIER

DRAINAGE TILE



ARRISCRAFT-CADD

TITLE: FOUNDATION TO WALL JUNCTION / BURIED TILE UNIT WITH GRAVEL MOWING STRIP

DETAIL No: SS08SAT - DP2U

U005

DATE DRAWN: 16 Jan 2021

SCALE: 3"=1'-0"

DRAWN BY: TRI